

COLUMBUS, OHIO

AL-94 (FAA)

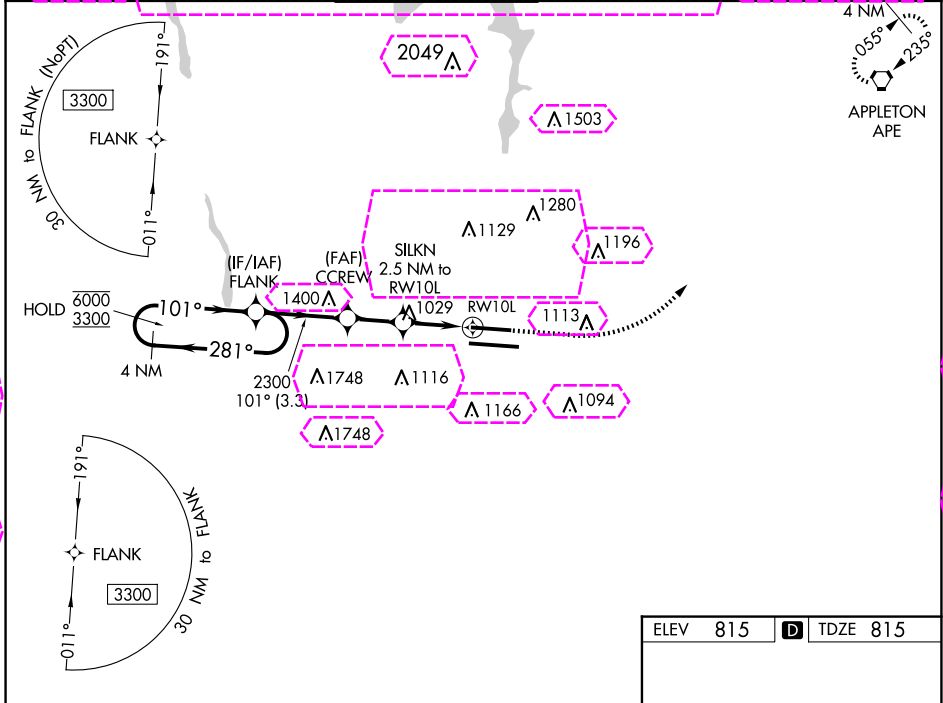
25107

WAAS CH 40299 W10B	APP CRS 101°	Rwy Idg TDZE Apt Elev	8000 815 815
-------------------------------------	---------------------	--------------------------	---

RNAV (GPS) Y RWY 10L

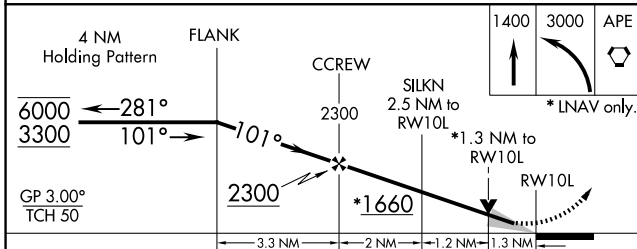
JOHN GLENN COLUMBUS INTL (CMH)

RNP APCH		COLUMBUS APP CON		COLUMBUS TOWER		GND CON	CLNC DEL	CPDLC
<p>▼ For uncompensated Baro-VNAV systems, LNAV/VNAV NA below -19°C or above 54°C. ▲ LNAV procedure NA during simultaneous operations. Use of FD or AP providing RNAV track guidance required during simultaneous operations. Simultaneous approach authorized. For inop ALS, increase LNAV Cat C/D visibility to 1½ SM. # RVR 1800 authorized with use of FD or AP or HUD to DA.</p>							MISSED APPROACH: Climb to 1400 then climbing left turn to 3000 direct APE VORTAC and hold.	
D-ATIS								
124.6		125.95 371.975		132.7 257.8		121.9 348.6	126.3	



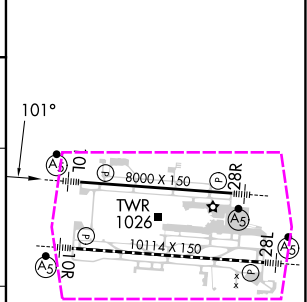
EC-2, 30 OCT 2025 to 27 NOV 2025

EC-2, 30 OCT 2025 to 27 NOV 2025



ELEV 815	D TDZE 815
----------	-------------------

CATEGORY	A	B	C	D
LPV DA #		1015/24	200 (200-½)	
LNAV/VNAV DA		1197/35	382 (400-⅓)	
LNAV MDA	1280/24	465 (500-½)	1280/50	465 (500-1)
CIRCLING	1340-1	525 (600-1)	1520-2 705 (800-2)	1520-2¼ 705 (800-2¼)



TBZ/CL Rwy 10R-28L
HIRL Rwy 10R-28L and 10L-28R

COLUMBUS, OHIO
Amdt 4 22APR21

40°00'N-82°54'W

JOHN GLENN COLUMBUS INTL (CMH)

RNAV (GPS) Y RWY 10L

COLUMBUS, OHIO

AL-94 (FAA)

25331


WAAS CH 40299 W10B	APP CRS 101°	Rwy Ldg TDZE Apt Elev	8000 815 815
--	------------------------	-----------------------------	---

RNAV (GPS) Y RWY 10L

JOHN GLENN COLUMBUS INTL (CMH)

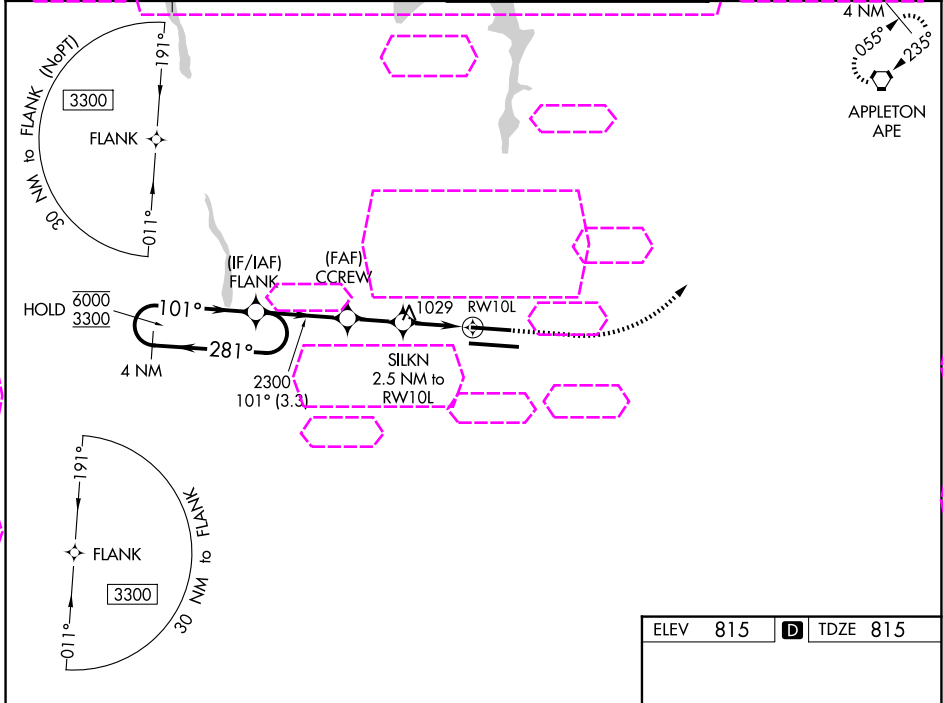
RNP APCH.

⚠ For uncompensated Baro-VNAV systems, LNAV/VNAV NA below -19°C or above 54°C.
 ⚠ LNAV procedure NA during simultaneous operations. Use of FD or AP providing RNAV track guidance required during simultaneous operations. Simultaneous approach authorized. For inop ALS, increase LNAV Cat C/D visibility to 1½ SM.
 # RVR 1800 authorized with use of FD or AP or HUD to DA.

MALSRL


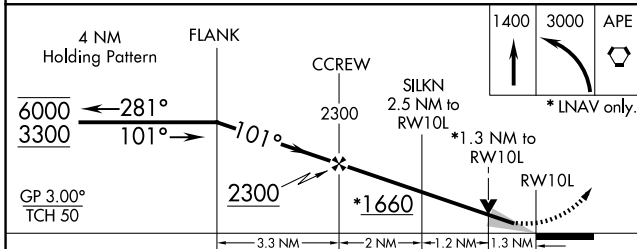
MISSED APPROACH:
 Climb to 1400 then climbing left turn to 3000 direct APE VORTAC and hold.

D-ATIS 124.6	COLUMBUS APP CON 125.95 371.975	COLUMBUS TOWER 132.7 257.8	GND CON 121.9 348.6
------------------------	---	--------------------------------------	-------------------------------

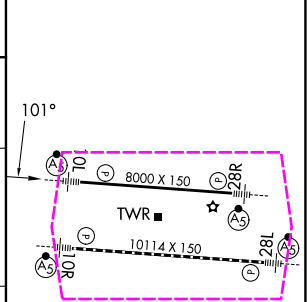


EC-2, 27 NOV 2025 to 25 DEC 2025

EC-2, 27 NOV 2025 to 25 DEC 2025



ELEV 815	D TDZE 815
----------	-------------------



CATEGORY	A	B	C	D
LPV DA #	1015/24		200 (200-½)	
LNAV/VNAV DA	1197/35		382 (400-⅝)	
LNAV MDA	1280/24 465 (500-½)		1280/50 465 (500-1)	
CIRCLING	1340-1 525 (600-1)		1520-2 705 (800-2) 1520-2¼ 705 (800-2¼)	

TDZL/RCLS Rwy 10R-28L
 HIRL Rwy's 10R-28L and 10L-28R

COLUMBUS, OHIO
 Amdt 4 22APR21

40°00'N-82°54'W

JOHN GLENN COLUMBUS INTL (CMH) RNAV (GPS) Y RWY 10L