

COLUMBUS, OHIO

AL-94 (FAA)

25163

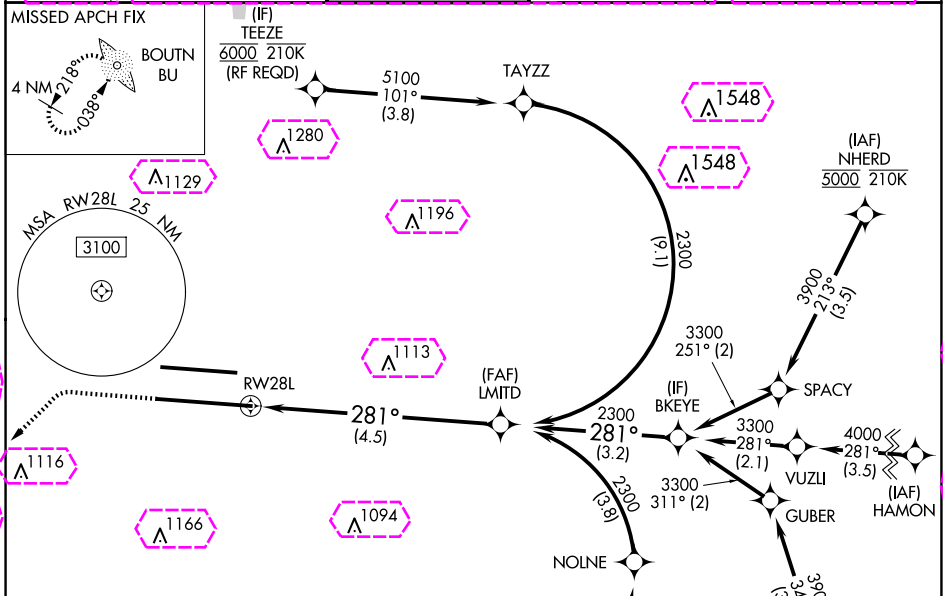
APP CRS	Rwy Ldg	<b>10114</b>
<b>281°</b>	TDZE	<b>815</b>
	Apt Elev	<b>815</b>

# RNAV (RNP) Z RWY 28L

JOHN GLENN COLUMBUS INTL (CMH)

<b>RNP AR APCH.</b> For uncompensated Baro-VNAV systems, procedure NA below -19°C or above 54°C. For inop ALS, increase RNP 0.30 all Cats visibility to 1½ SM. Simultaneous approach authorized.		MALSR 	MISSED APPROACH: Climb to 1400 then climbing left turn to 3000 direct BOUTN LOM and hold.
---	--	-----------	--

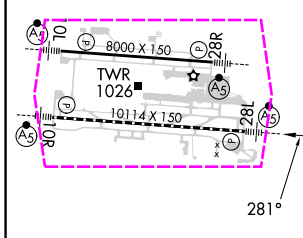
D-ATIS <b>124.6</b>	COLUMBUS APP CON <b>125.95 371.975</b>	COLUMBUS TOWER <b>132.7 257.8</b>	GND CON <b>121.9 348.6</b>	CLNC DEL <b>126.3</b>	CPDLC
------------------------	---	--------------------------------------	-------------------------------	--------------------------	-------



EC-2, 30 OCT 2025 to 27 NOV 2025

EC-2, 30 OCT 2025 to 27 NOV 2025

ELEV 815	<b>D</b>	TDZE 815
----------	----------	----------



1400	3000	BU	VGSi and RNAV glidepath not coincident (VGSi Angle 3.00/ TCH 68).
See planview for multiple IF locations.			LMITD 2300

CATEGORY	A	B	C	D
RNP 0.17 DA		1147/26	332 (400-½)	
RNP 0.30 DA		1314/50	499 (500-1)	

TDZ/CL Rwy 10R-28L  
HRL Rwy 10R-28L and 10L-28R

**AUTHORIZATION REQUIRED**

COLUMBUS, OHIO  
Amdt 2A 24MAR22

40°00'N-82°54'W

JOHN GLENN COLUMBUS INTL (CMH)  
**RNAV (RNP) Z RWY 28L**

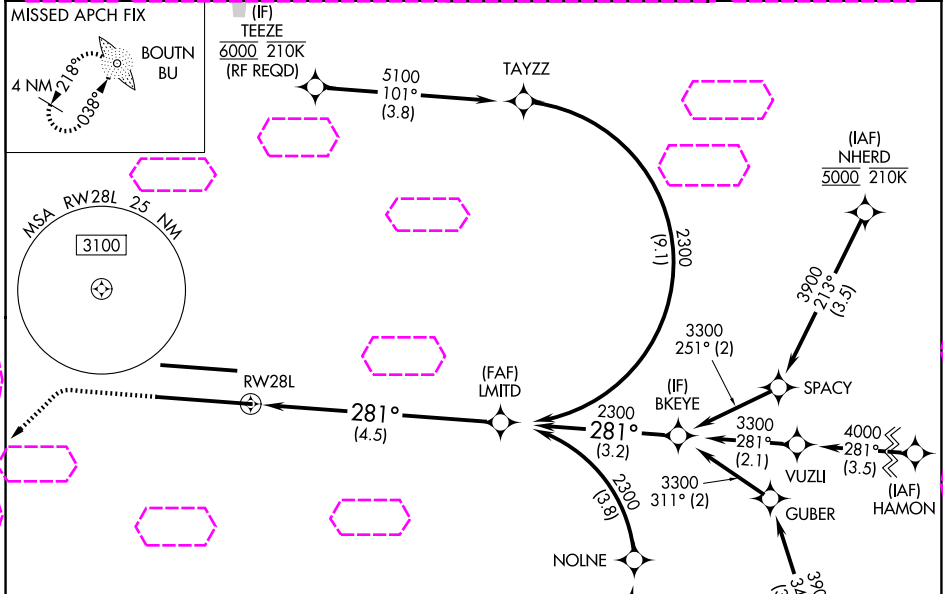
APP CRS <b>281°</b>	Rwy Ldg TDZE Apt Elev	<b>10114</b> <b>815</b> <b>815</b>
------------------------	-----------------------------	--

# RNAV (RNP) Z RWY 28L

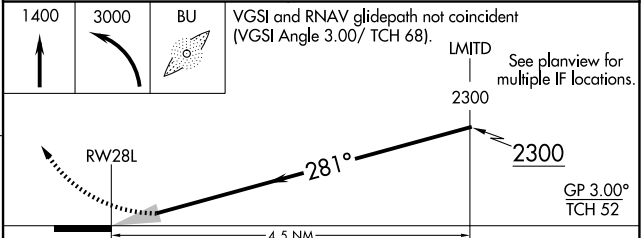
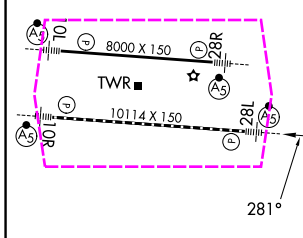
JOHN GLENN COLUMBUS INTL (CMH)

<b>RNP AR APCH.</b> For uncompensated Baro-VNAV systems, procedure NA below -19°C or above 54°C. For inop ALS, increase RNP 0.30 all Cats visibility to 1 3/8 SM. Simultaneous approach authorized.	<b>MALSR</b> 	<b>MISSED APPROACH:</b> Climb to 1400 then climbing left turn to 3000 direct BOUTN LOM and hold.

<b>D-ATIS</b> <b>124.6</b>	<b>COLUMBUS APP CON</b> <b>125.95 371.975</b>	<b>COLUMBUS TOWER</b> <b>132.7 257.8</b>	<b>GND CON</b> <b>121.9 348.6</b>
-------------------------------	--	---	--------------------------------------



ELEV 815	<b>D</b>	TDZE 815
----------	----------	----------



CATEGORY	A	B	C	D
RNP 0.17 DA		1147/26	332 (400-1/2)	
RNP 0.30 DA		1314/50	499 (500-1)	

TDZL/RCLS Rwy 10R-28L  
HIRL Rwy 10R-28L and 10L-28R

**AUTHORIZATION REQUIRED**