

COLUMBUS, OHIO

AL-94 (FAA)

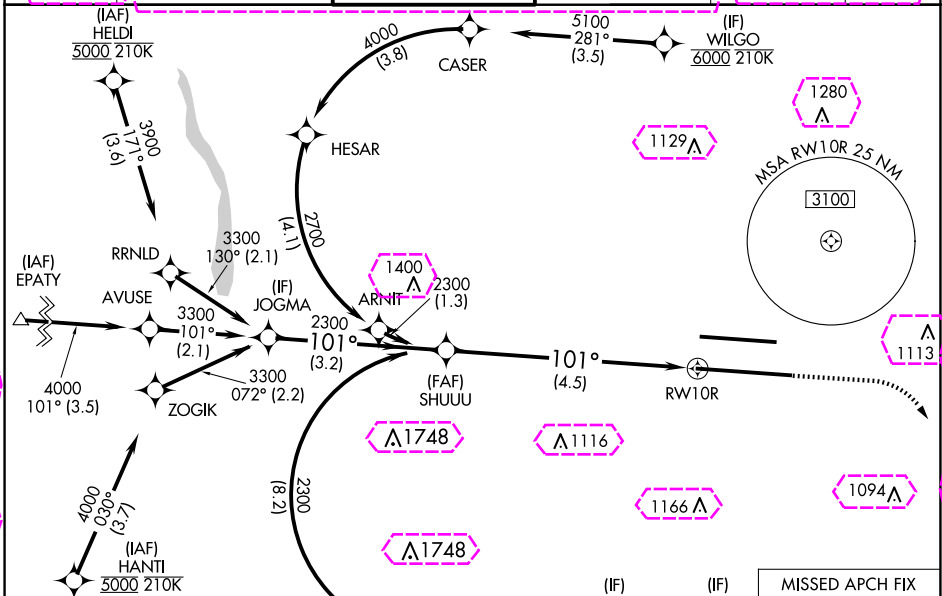
25163

APP CRS	Rwy Idg	10114
101°	TDZE	809
	Apt Elev	815

RNAV (RNP) Z RWY 10R

JOHN GLENN COLUMBUS INTL (CMH)

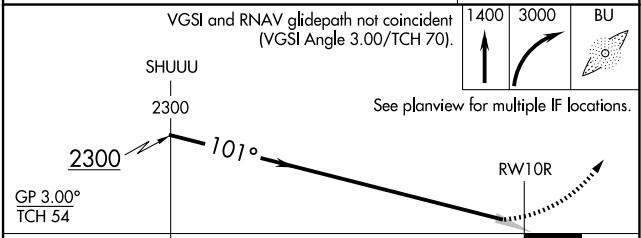
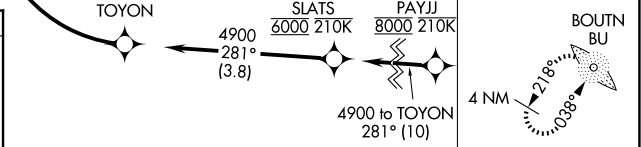
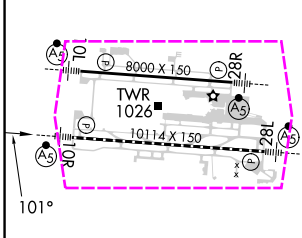
RNP AR APCH - GPS.			MALSR	MISSED APPROACH: Climb to 1400 then climbing right turn to 3000 direct BOUTN LOM and hold.	
<p>Simultaneous approach authorized. For uncompensated Baro-VNAV systems, procedure NA below -14°C or above 54°C. For inop ALS, increase RNP 0.30 all Cats visibility to RVR 6000.</p>					
D-ATIS	COLUMBUS APP CON	COLUMBUS TOWER	GND CON	CLNC DEL	CPDLC
124.6	125.95 371.975	132.7 257.8	121.9 348.6	126.3	



EC-2, 30 OCT 2025 to 27 NOV 2025

EC-2, 30 OCT 2025 to 27 NOV 2025

ELEV	815	D	TDZE	809
------	------------	---	------	------------



CATEGORY	A	B	C	D
RNP 0.17 DA		1138/26	329 (400-1/2)	
RNP 0.30 DA		1214/40	405 (400-3/4)	

TDZ/CL Rwy 10R and 28L
 HIRL Rwy 10R-28L and 10L-28R

COLUMBUS, OHIO
 Amdt 3 26DEC24

40°00'N-82°54'W

JOHN GLENN COLUMBUS INTL (CMH)
RNAV (RNP) Z RWY 10R

AUTHORIZATION REQUIRED

COLUMBUS, OHIO

AL-94 (FAA)

25331

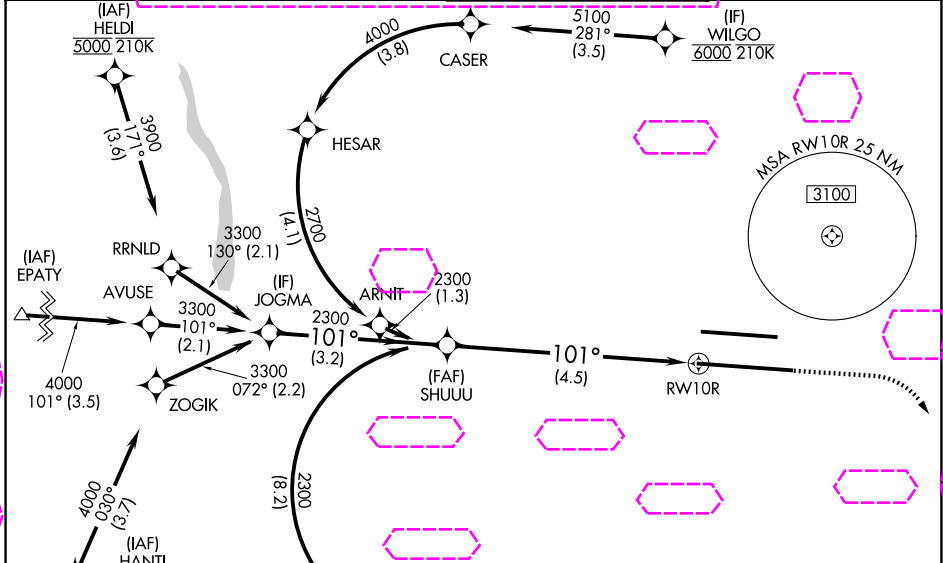
APP CRS	Rwy Ldg	10114
101°	TDZE	809
	Apt Elev	815

RNAV (RNP) Z RWY 10R

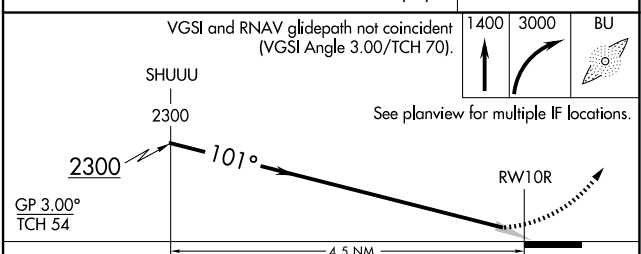
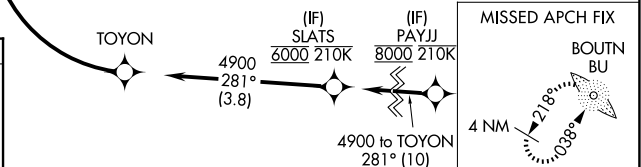
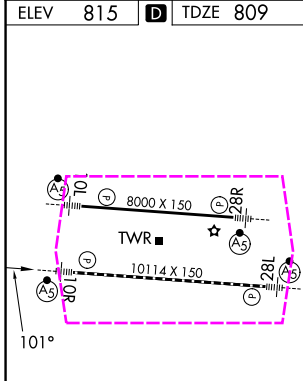
JOHN GLENN COLUMBUS INTL (CMH)

RNP AR APCH - GPS.	MALSR	MISSED APPROACH: Climb to 1400 then climbing right turn to 3000 direct BOUTN LOM and hold.
<p>Simultaneous approach authorized. For uncompensated Baro-VNAV systems, procedure NA below -14°C or above 54°C. For inop ALS, increase RNP 0.30 all Cats visibility to RVR 6000.</p>		

D-ATIS 124.6	COLUMBUS APP CON 125.95 371.975	COLUMBUS TOWER 132.7 257.8	GND CON 121.9 348.6
------------------------	---	--------------------------------------	-------------------------------



ELEV 815	D	TDZE 809
----------	----------	----------



CATEGORY	A	B	C	D
RNP 0.17 DA		1138/26	329 (400-½)	
RNP 0.30 DA		1214/40	405 (400-¾)	

TDZL/RCLS Rwy's 10R and 28L
HIRL Rwy's 10R-28L and 10L-28R

COLUMBUS, OHIO
Amdt 3 26DEC24

40°00'N-82°54'W

AUTHORIZATION REQUIRED

RNAV (RNP) Z RWY 10R

EC-2, 27 NOV 2025 to 25 DEC 2025

EC-2, 27 NOV 2025 to 25 DEC 2025