

COLUMBUS, OHIO

AL-94 (FAA)

25107

APP CRS	Rwy Idg	8000
101°	TDZE	815
	Apt Elev	815

RNAV (RNP) Z RWY 10L

JOHN GLENN COLUMBUS INTL (CMH)

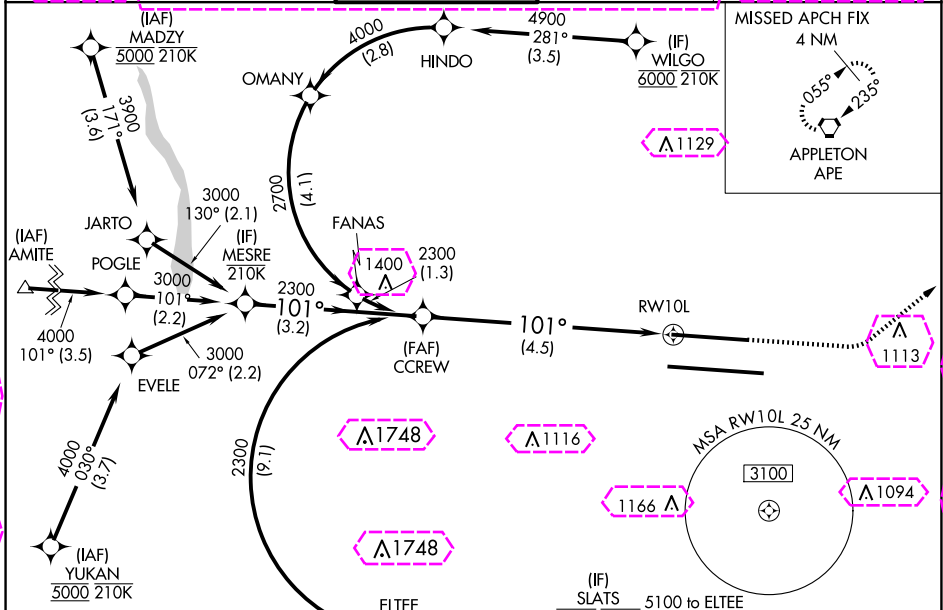
RNP AR APCH - GPS.

Simultaneous approach authorized. For uncompensated Baro-VNAV systems, procedure NA below -14°C or above 54°C. For inop ALS, increase RNP 0.30 all Cats visibility to RVR 6000.



MISSED APPROACH:
Climb to 1400 then climbing left turn to 3000 direct APE VORTAC and hold.

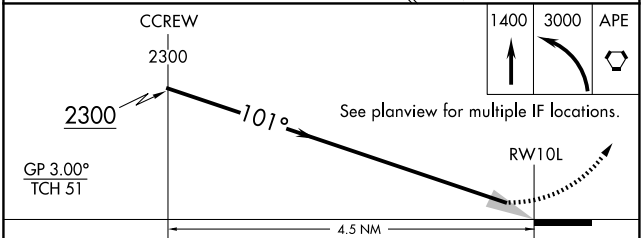
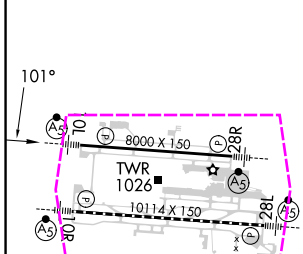
D-ATIS	COLUMBUS APP CON	COLUMBUS TOWER	GND CON	CLNC DEL	CPDLC
124.6	125.95 371.975	132.7 257.8	121.9 348.6	126.3	



EC-2, 30 OCT 2025 to 27 NOV 2025

EC-2, 30 OCT 2025 to 27 NOV 2025

ELEV 815	D	TDZE 815
----------	----------	----------



CATEGORY	A	B	C	D
RNP 0.13 DA		1148/26	333 (400-1/2)	
RNP 0.26 DA		1198/35	383 (400-3/8)	
RNP 0.30 DA		1216/40	401 (500-3/4)	

TDZ/CL Rwy 10R and 28L
HIRL Rwy 10R-28L and 10L-28R

AUTHORIZATION REQUIRED

COLUMBUS, OHIO
Amdt 3 26DEC24

40°00'N-82°54'W

JOHN GLENN COLUMBUS INTL (CMH) RNAV (RNP) Z RWY 10L

COLUMBUS, OHIO

AL-94 (FAA)

25331

APP CRS	Rwy Ldg	8000
101°	TDZE	815
	Apt Elev	815

RNAV (RNP) Z RWY 10L

JOHN GLENN COLUMBUS INTL (CMH)

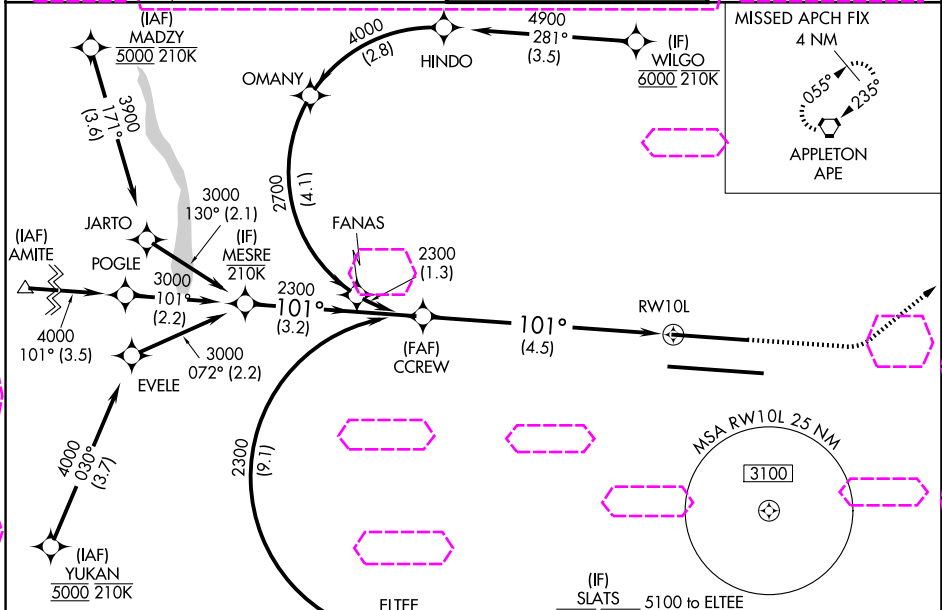
RNP AR APCH - GPS.

Simultaneous approach authorized. For uncompensated Baro-VNAV systems, procedure NA below -14°C or above 54°C. For inop ALS, increase RNP 0.30 all Cats visibility to RVR 6000.



MISSED APPROACH:
Climb to 1400 then climbing left turn to 3000 direct APE VORTAC and hold.

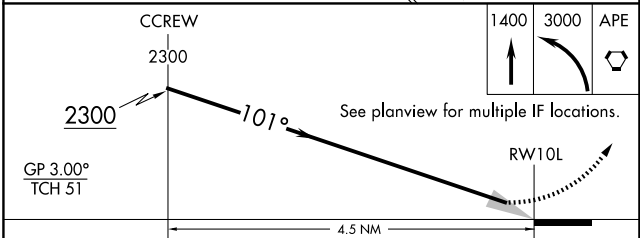
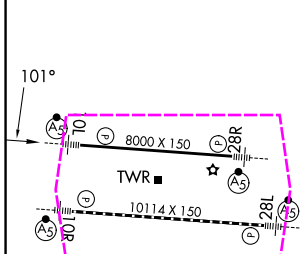
D-ATIS 124.6	COLUMBUS APP CON 125.95 371.975	COLUMBUS TOWER 132.7 257.8	GND CON 121.9 348.6
------------------------	---	--------------------------------------	-------------------------------



EC-2, 27 NOV 2025 to 25 DEC 2025

EC-2, 27 NOV 2025 to 25 DEC 2025

ELEV 815	D	TDZE 815
----------	----------	----------



CATEGORY	A	B	C	D
RNP 0.13 DA		1148/26	333 (400-1/2)	
RNP 0.26 DA		1198/35	383 (400-3/8)	
RNP 0.30 DA		1216/40	401 (500-3/4)	

AUTHORIZATION REQUIRED

COLUMBUS, OHIO
Amdt 3 26DEC24

40°00'N-82°54'W

JOHN GLENN COLUMBUS INTL (CMH) RNAV (RNP) Z RWY 10L