

COLUMBUS, OHIO

AL-94 (FAA)

25107

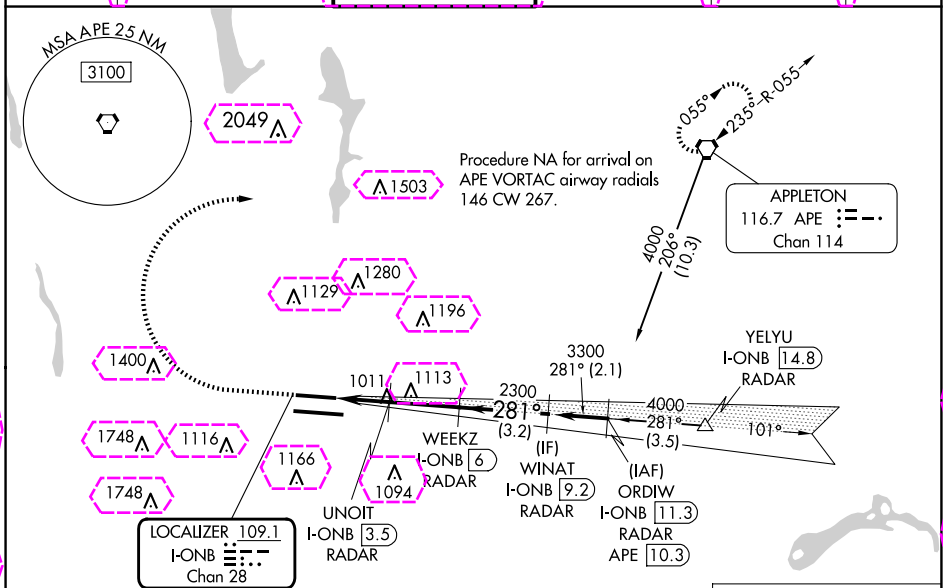
LOC/DME I-ONB <b>109.1</b> Chan 28	APP CRS <b>281°</b>	Rwy ldg <b>3000</b> TDZE <b>813</b> Apt Elev <b>815</b>
--	------------------------	---

# ILS or LOC RWY 28R

JOHN GLENN COLUMBUS INTL (CMH)

DME or RADAR required.	MALSR	MISSED APPROACH: Climb to 1400 then climbing right turn to 3000 direct APE VORTAC and hold.
<p>Simultaneous approach authorized. Autopilot coupled approach NA.</p> <p>For inop ALS, increase S-LOC 28R Cat C/D visibility to 1 1/2 SM.</p>		

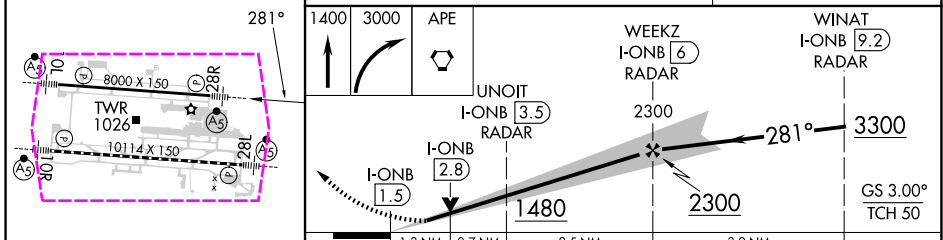
D-ATIS <b>124.6</b>	COLUMBUS APP CON <b>125.95 371.975</b>	COLUMBUS TOWER <b>132.7 257.8</b>	GND CON <b>121.9 348.6</b>	CLNC DEL <b>126.3</b>	CPDLC
------------------------	---	--------------------------------------	-------------------------------	--------------------------	-------



EC-2, 30 OCT 2025 to 27 NOV 2025

EC-2, 30 OCT 2025 to 27 NOV 2025

ELEV 815	D	TDZE 813



CATEGORY	A	B	C	D
S-ILS 28R	1013/24 200 (200-1/2)			
S-LOC 28R	1280/24	467 (500-1/2)	1280/50	467 (500-1)
<b>CIRCLING</b>	1340-1	525 (600-1)	1520-2 705 (800-2)	1520-2 1/4 705 (800-2 1/4)

COLUMBUS, OHIO  
Amdt 5 22APR21

40°00'N-82°54'W

# ILS or LOC RWY 28R

COLUMBUS, OHIO

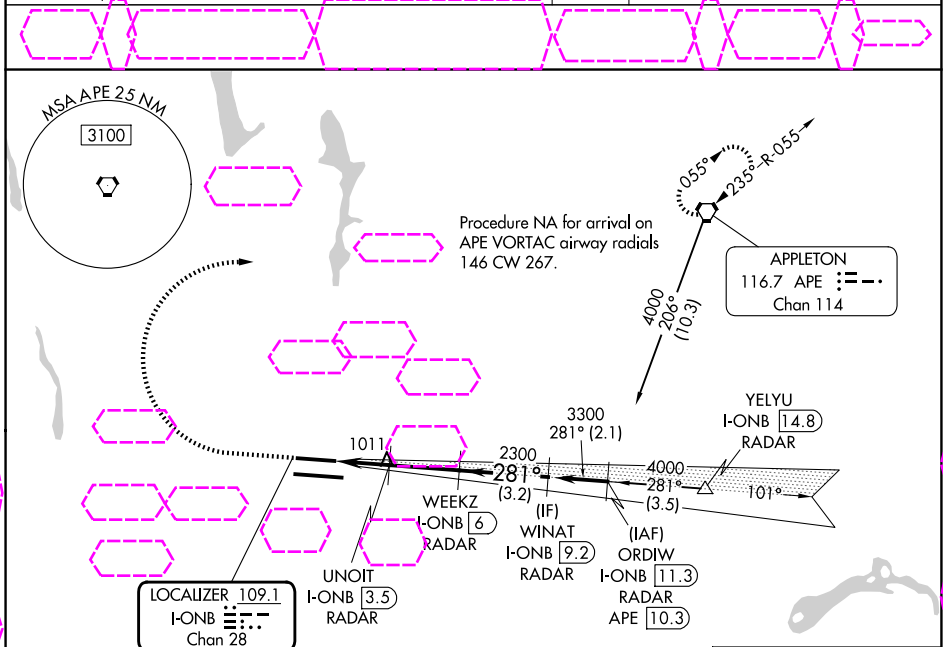
AL-94 (FAA)

25331

LOC/DME I-ONB <b>109.1</b> Chan 28	APP CRS <b>281°</b>	Rwy Ldg <b>3000</b> TDZE <b>813</b> Apt Elev <b>815</b>
--	------------------------	---

**ILS or LOC RWY 28R**  
JOHN GLENN COLUMBUS INTL (CMH)

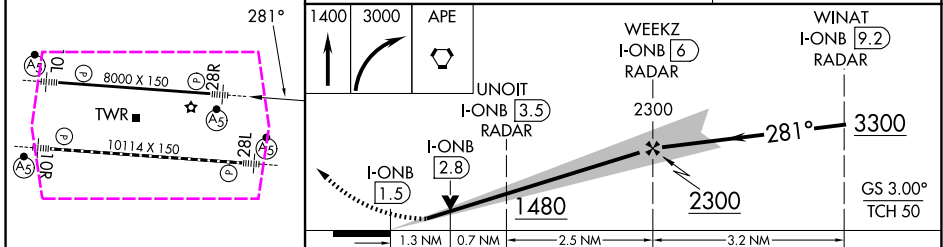
DME or RADAR required.	MALSR	MISSED APPROACH: Climb to 1400 then climbing right turn to 3000 direct APE VORTAC and hold.
<p>Simultaneous approach authorized. Autopilot coupled approach NA.</p> <p>For inop ALS, increase S-LOC 28R Cat C/D visibility to 1 1/2 SM.</p>		



EC-2, 27 NOV 2025 to 25 DEC 2025

EC-2, 27 NOV 2025 to 25 DEC 2025

ELEV 815	D	TDZE 813
<p>ALTERNATE MISSED APCH FIX BOUTN BU 230</p>		



TDZL/RCLS Rwy 10R-28L HIRL Rwys 10R-28L and 10L-28R FAF to MAP 4.5 NM	<table border="1"> <tr> <th>CATEGORY</th> <th>A</th> <th>B</th> <th>C</th> <th>D</th> </tr> <tr> <td>S-ILS 28R</td> <td colspan="4">1013/24 200 (200-1/2)</td> </tr> <tr> <td>S-LOC 28R</td> <td>1280/24</td> <td>467 (500-1/2)</td> <td>1280/50</td> <td>467 (500-1)</td> </tr> <tr> <td>CIRCLING</td> <td>1340-1</td> <td>525 (600-1)</td> <td>1520-2 705 (800-2)</td> <td>1520-2 1/4 705 (800-2 1/4)</td> </tr> </table>				CATEGORY	A	B	C	D	S-ILS 28R	1013/24 200 (200-1/2)				S-LOC 28R	1280/24	467 (500-1/2)	1280/50	467 (500-1)	CIRCLING	1340-1	525 (600-1)	1520-2 705 (800-2)	1520-2 1/4 705 (800-2 1/4)
CATEGORY	A	B	C	D																				
S-ILS 28R	1013/24 200 (200-1/2)																							
S-LOC 28R	1280/24	467 (500-1/2)	1280/50	467 (500-1)																				
CIRCLING	1340-1	525 (600-1)	1520-2 705 (800-2)	1520-2 1/4 705 (800-2 1/4)																				
<table border="1"> <tr> <td>Knots</td> <td>60</td> <td>90</td> <td>120</td> <td>150</td> <td>180</td> </tr> <tr> <td>Min:Sec</td> <td>4:30</td> <td>3:00</td> <td>2:15</td> <td>1:48</td> <td>1:30</td> </tr> </table>	Knots	60	90	120	150	180	Min:Sec	4:30	3:00	2:15	1:48	1:30												
Knots	60	90	120	150	180																			
Min:Sec	4:30	3:00	2:15	1:48	1:30																			

COLUMBUS, OHIO

Amdt 5 22APR21

40°00'N-82°54'W

JOHN GLENN COLUMBUS INTL (CMH)  
**ILS or LOC RWY 28R**