

COLUMBUS, OHIO

AL-94 (FAA)

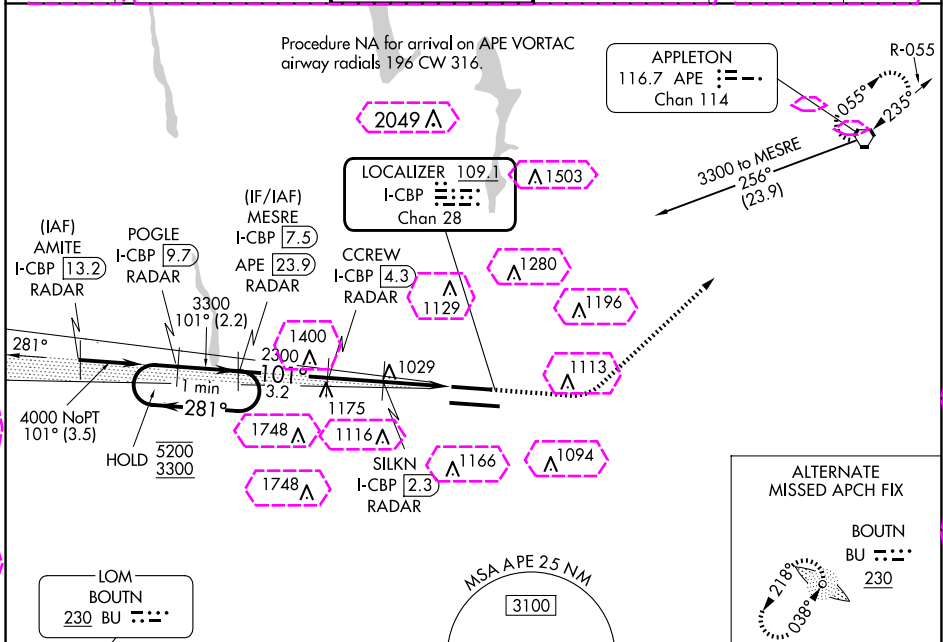
25107

LOC/DME I-CBP 109.1 Chan 28	APP CRS 101°	Rwy Idg 8000 TDZE 815 Apt Elev 815
--	------------------------	---

ILS or LOC RWY 10L

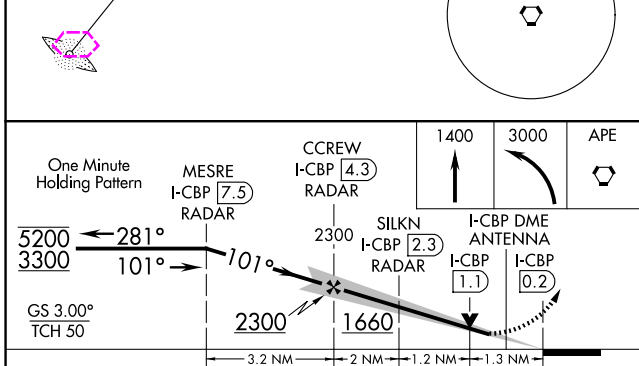
JOHN GLENN COLUMBUS INTL (CMH)

DME or RADAR required.		MALSR	MISSED APPROACH: Climb to 1400 then climbing left turn to 3000 direct APE VORTAC and hold.		
Simultaneous approach authorized. For inop ALS, increase S-LOC 10L Cat C/D visibility to 1 1/2 SM. * RVR 1800 authorized with the use of FD or AP or HUD to DA.					
D-ATIS 124.6	COLUMBUS APP CON 125.95 371.975	COLUMBUS TOWER 132.7 257.8	GND CON 121.9 348.6	CLNC DEL 126.3	CPDLC

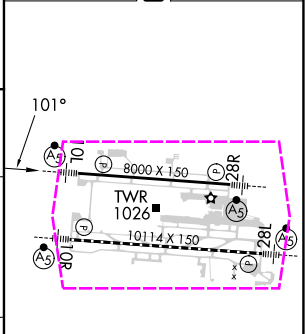


EC-2, 30 OCT 2025 to 27 NOV 2025

EC-2, 30 OCT 2025 to 27 NOV 2025



ELEV 815	D	TDZE 815
----------	---	----------



CATEGORY	A	B	C	D
S-ILS 10L*	1015/24 200 (200-1/2)			
S-LOC 10L	1280/24	465 (500-1/2)	1280/50	465 (500-1)
CIRCLING	1340-1	525 (600-1)	1520-2 705 (800-2)	1520-2 1/4 705 (800-2 1/4)

TDZ/CL Rwy 10R-28L					
HRL Rwys 10R-28L and 10L-28R					
FAF to MAP 4.5 NM					
Knots	60	90	120	150	180
Min:Sec	4:30	3:00	2:15	1:48	1:30

COLUMBUS, OHIO
Amdt 20 22APR21

40°00'N-82°54'W

ILS or LOC RWY 10L

COLUMBUS, OHIO

AL-94 (FAA)

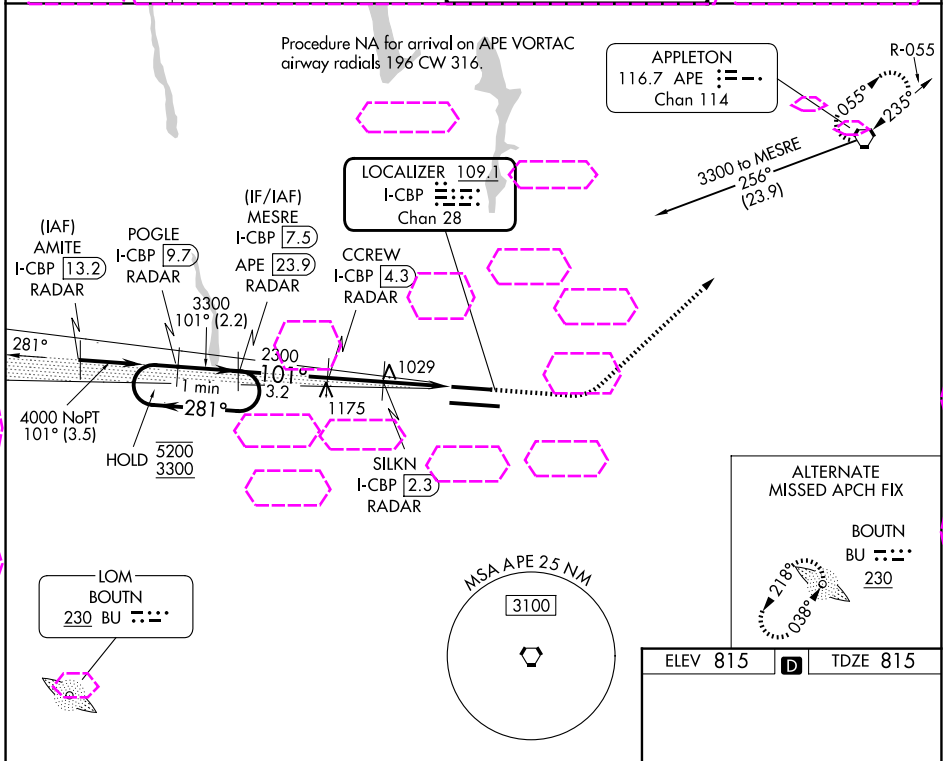
25331

LOC/DME I-CBP 109.1 Chan 28	APP CRS 101°	Rwy Ldg 8000 TDZE 815 Apt Elev 815
--	------------------------	---

ILS or LOC RWY 10L

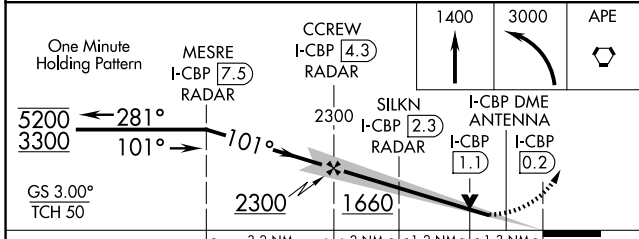
JOHN GLENN COLUMBUS INTL (CMH)

D-ATIS 124.6		COLUMBUS APP CON 125.95 371.975		COLUMBUS TOWER 132.7 257.8		GND CON 121.9 348.6	
------------------------	--	---	--	--------------------------------------	--	-------------------------------	--

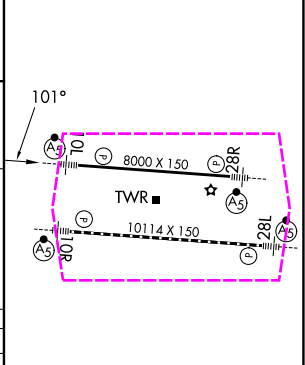


EC-2, 27 NOV 2025 to 25 DEC 2025

EC-2, 27 NOV 2025 to 25 DEC 2025



ELEV 815	D	TDZE 815
----------	---	----------



CATEGORY	A	B	C	D
S-ILS 10L*	1015/24 200 (200-½)			
S-LOC 10L	1280/24	465 (500-½)	1280/50	465 (500-1)
CIRCLING	1340-1	525 (600-1)	1520-2 705 (800-2)	1520-2 ¼ 705 (800-2 ¼)

TDZL/RCLS Rwy 10R-28L		HIRL Rwys 10R-28L and 10L-28R	
FAF to MAP 4.5 NM			
Knots	60	90	120 150 180
Min:Sec	4:30	3:00	2:15 1:48 1:30

COLUMBUS, OHIO
Amdt 20 22APR21

40°00'N-82°54'W

ILS or LOC RWY 10L