



(CAVVS5, CAVVS) 25331

AL-84 (FAA)

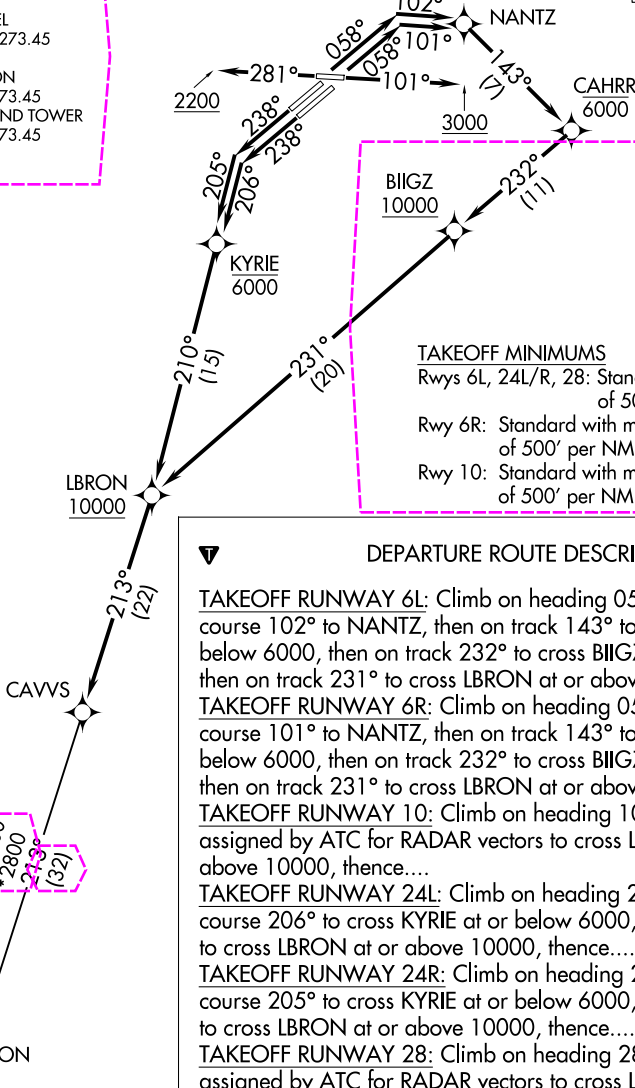
CLEVELAND-HOPKINS INTL (CLE)  
CLEVELAND, OHIO

# CAVVS FIVE DEPARTURE (RNAV)

CLEVELAND DEP CON  
135.875 346.325  
D-ATIS  
132.375  
CLNC DEL  
125.05 273.45  
CPDLC  
GND CON  
121.7 273.45  
CLEVELAND TOWER  
124.5 273.45

RNAV 1 - DME/DME/IRU or GPS.  
RADAR required.

**TOP ALTITUDE:  
14000**



### TAKEOFF MINIMUMS

- Rwys 6L, 24L/R, 28: Standard with minimum climb of 500' per NM to 1300.
- Rwy 6R: Standard with minimum climb of 500' per NM to 1400.
- Rwy 10: Standard with minimum climb of 500' per NM to 1600.

### DEPARTURE ROUTE DESCRIPTION

**TAKEOFF RUNWAY 6L:** Climb on heading 058° to intercept course 102° to NANTZ, then on track 143° to cross CAHRR at or below 6000, then on track 232° to cross BIIGZ at or above 10000, then on track 231° to cross LBRON at or above 10000, thence....

**TAKEOFF RUNWAY 6R:** Climb on heading 058° to intercept course 101° to NANTZ, then on track 143° to cross CAHRR at or below 6000, then on track 232° to cross BIIGZ at or above 10000, then on track 231° to cross LBRON at or above 10000, thence....

**TAKEOFF RUNWAY 10:** Climb on heading 101° to 3000, then as assigned by ATC for RADAR vectors to cross LBRON at or above 10000, thence....

**TAKEOFF RUNWAY 24L:** Climb on heading 238° to intercept course 206° to cross KYRIE at or below 6000, then on track 210° to cross LBRON at or above 10000, thence....

**TAKEOFF RUNWAY 24R:** Climb on heading 238° to intercept course 205° to cross KYRIE at or below 6000, then on track 210° to cross LBRON at or above 10000, thence....

**TAKEOFF RUNWAY 28:** Climb on heading 281° to 2200, then as assigned by ATC for RADAR vectors to cross LBRON at or above 10000, thence....

....on track 213° to CAVVS, then on (transition). Maintain 14000, expect filed altitude ten minutes after departure.

APPLETON TRANSITION (CAVVS5, APE)

NOTE: Chart not to scale.

# CAVVS FIVE DEPARTURE (RNAV)

(CAVVS5, CAVVS) 27NOV25

CLEVELAND, OHIO  
CLEVELAND-HOPKINS INTL (CLE)

EC-2, 27 NOV 2025 to 25 DEC 2025

EC-2, 27 NOV 2025 to 25 DEC 2025