

CHANUTE, KANSAS

AL-75 (FAA)

24193

APP CRS	Rwy Idg	3985
002°	TDZE	1001
	Apt Elev	1003

RNAV (GPS) RWY 36

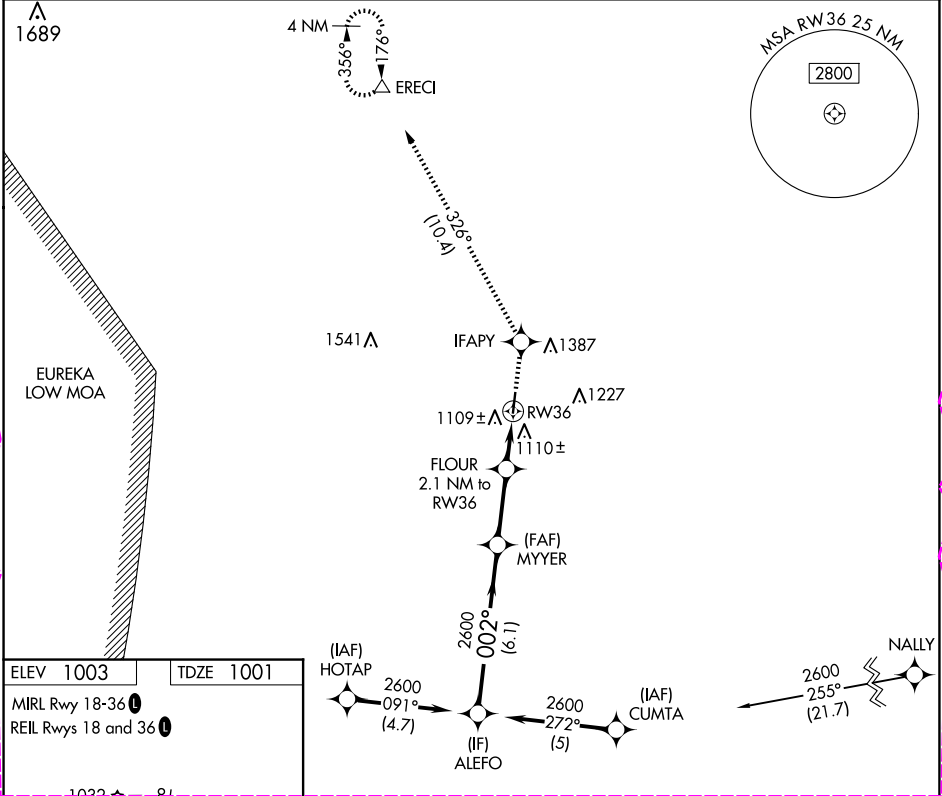
CHANUTE MARTIN JOHNSON (CNU)

RNP APCH - GPS.

Procedure NA at night. Rwy 36 helicopter visibility reduction below 1 SM NA.

MISSED APPROACH: Climb to 2900 direct IFAPY and on track 326° to ERECI and hold.

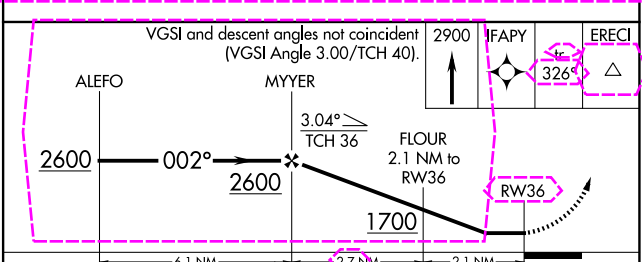
ASOS 127.075	KANSAS CITY CENTER 132.9 279.5	UNICOM 122.7 (CTAF) 0
------------------------	--	---------------------------------



NC-2 30 OCT 2025 to 27 NOV 2025

NC-2 30 OCT 2025 to 27 NOV 2025

ELEV 1003	TDZE 1001
MIRL Rwy 18-36	REIL Rws 18 and 36



CATEGORY	A	B	C	D
RNAV MDA	1400-1	399 (400-1)	NA	NA
CIRCLING	1480-1 477 (500-1)	1620-1 617 (700-1)	NA	NA

CHANUTE, KANSAS
Orig-F 11JUL24

37°40'N-95°29'W

CHANUTE MARTIN JOHNSON (CNU) RNAV (GPS) RWY 36

CHANUTE, KANSAS

AL-75 (FAA)

25331

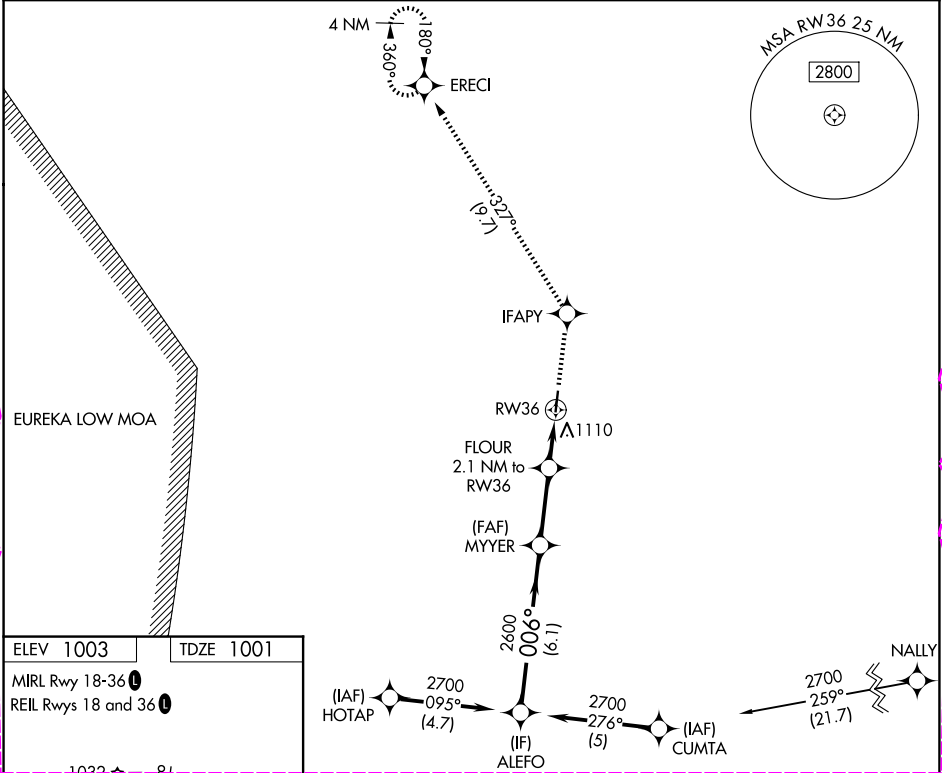
APP CRS **006°**
 Rwy Ldg **3985**
 TDZE **1001**
 Apt Elev **1003**

RNAV (GPS) RWY 36
 CHANUTE MARTIN JOHNSON (CNU)

RNP APCH - GPS.
 Rwy 36 helicopter visibility reduction below 1 SM NA.
 Procedure NA at night.

MISSED APPROACH: Climb to 2900 direct IFAPY and on track 327° to ERECI and hold.

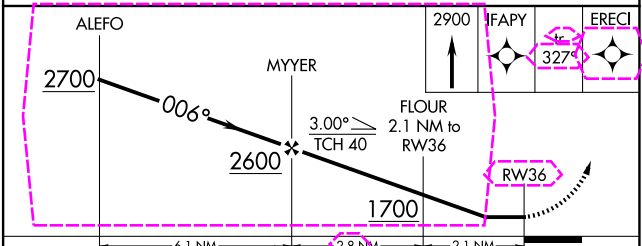
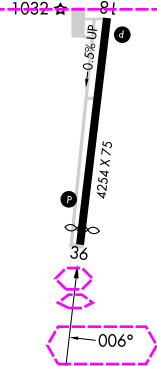
ASOS 127.075	KANSAS CITY CENTER 132.9 279.5	UNICOM 122.7 (CTAF) 0
------------------------	--	---------------------------------



NC-2, 27 NOV 2025 to 25 DEC 2025

NC-2, 27 NOV 2025 to 25 DEC 2025

ELEV 1003 TDZE 1001
 MIRL Rwy 18-36
 REIL Rwy 18 and 36



CATEGORY	A	B	C	D
RNAV MDA	1400-1	399 (400-1)	NA	NA
CIRCLING	1480-1 477 (500-1)	1620-1 617 (700-1)	NA	NA

CHANUTE, KANSAS
 Amdt 1 27NOV25

37°40'N-95°29'W

CHANUTE MARTIN JOHNSON (CNU)
RNAV (GPS) RWY 36