

CARLSBAD, NEW MEXICO

AL-71 (FAA)

25163

VORTAC CNM 116.3 Chan 110	APP CRS 325°	Rwy Ldg TDZE Apt Elev 5452 3268 3295
--	------------------------	--

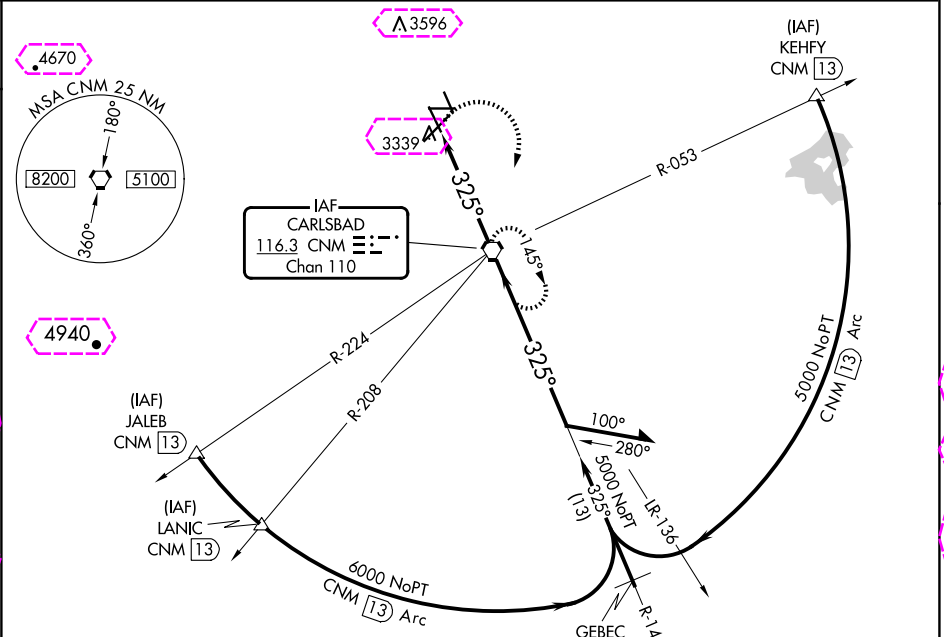
VOR RWY 32L

CAVERN CITY AIR TRML (CNM)

⚠ When local altimeter setting not received, use Artesia Muni altimeter setting and increase all MDA 120 feet and S-32L Cats C/D visibility to 1/2, Circling Cat C visibility to 2/4.

⚠ MISSED APPROACH: Climbing right turn to 5000 direct CNM VORTAC and hold.

ASOS 118.375	ALBUQUERQUE CENTER 135.875 292.15	UNICOM 123.0 (CTAF) 1
------------------------	---	--

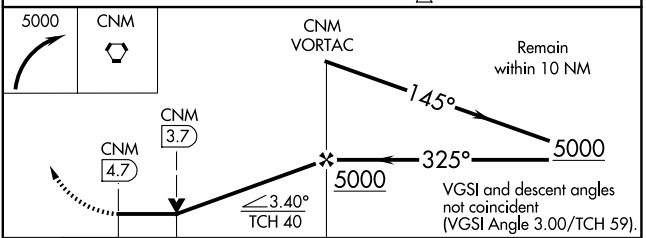
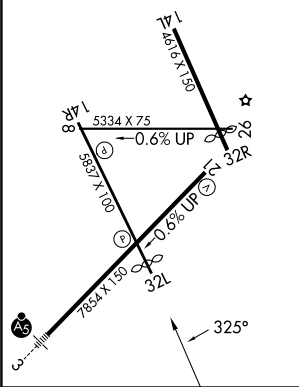


SW-1, 30 OCT 2025 to 27 NOV 2025

SW-1, 30 OCT 2025 to 27 NOV 2025

ELEV 3295	TDZE 3268
-----------	-----------

MIRL Rwy 3-21, 8-26 and 14R-32L



CATEGORY	A	B	C	D
S-32L	3680-1	412 (400-1)	3680-1½	412 (400-1½)
CIRCLING	3700-1 405 (500-1)	3780-1 485 (500-1)	3960-1¾ 665 (700-1¾)	4260-3 965 (1000-3)

CARLSBAD, NEW MEXICO
Amdt 6B 20AUG15

32°20'N-104°16'W

CAVERN CITY AIR TRML (CNM) VOR RWY 32L

CARLSBAD, NEW MEXICO

AL-71 (FAA)

25331

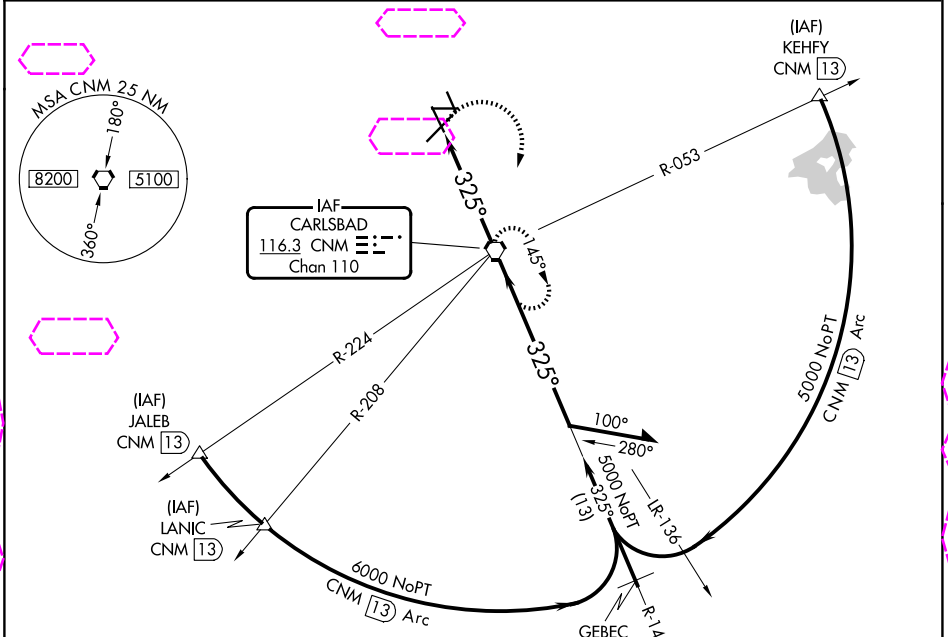
VORTAC CNM 116.3 Chan 110	APP CRS 325°	Rwy Ldg TDZE Apt Elev 5452 3268 3295
---	------------------------	--

VOR RWY 32L
CAVERN CITY AIR TRML (CNM)

⚠ When local altimeter setting not received, use Artesia Muni altimeter setting and increase all MDA 120 feet and S-32L Cats C/D visibility to 1/2, Circling Cat C visibility to 2/4.

⚠ MISSED APPROACH: Climbing right turn to 5000 direct CNM VORTAC and hold.

ASOS 118.375	ALBUQUERQUE CENTER 135.875 292.15	UNICOM 123.0 (CTAF) 1
------------------------	---	--

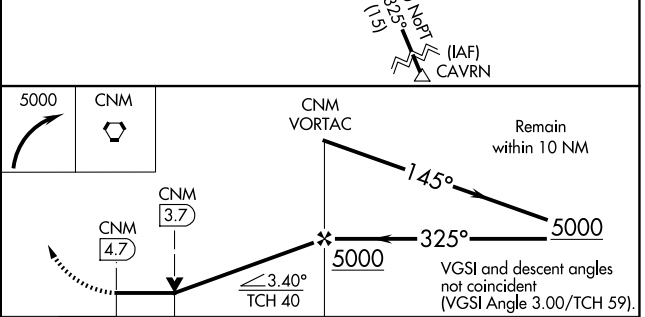
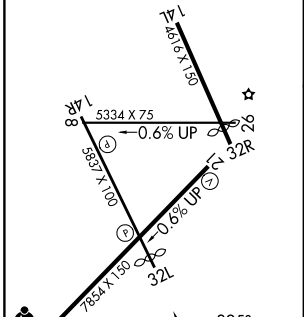


SW-1, 127 NOV 2025 to 25 DEC 2025

SW-1, 127 NOV 2025 to 25 DEC 2025

ELEV 3295	TDZE 3268
-----------	-----------

MIRL Rwy 3-21, 8-26 and 14R-32L



CATEGORY	A		B		C		D	
	1	2	1	2	1	2	1	2
S-32L	3680-1	412 (400-1)	3680-1	412 (400-1)	3680-1 1/4	412 (400-1 1/4)	3680-1 1/4	412 (400-1 1/4)
CIRCLING	3700-1	405 (500-1)	3780-1	485 (500-1)	3960-1 3/4	665 (700-1 3/4)	4260-3	965 (1000-3)

CARLSBAD, NEW MEXICO
Amdt 6B 20AUG15

32°20'N-104°16'W

CAVERN CITY AIR TRML (CNM)
VOR RWY 32L