

CARLSBAD, NEW MEXICO

AL-71 (FAA)

25163

WAAS CH <b>78226</b> <b>W32A</b>	APP CRS <b>324°</b>	Rwy Ldg TDZE Apt Elev	<b>5452</b> <b>3268</b> <b>3295</b>
--	------------------------	-----------------------------	---

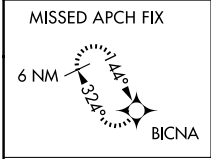
# RNAV (GPS) RWY 32L

CAVERN CITY AIR TRML (CNM)

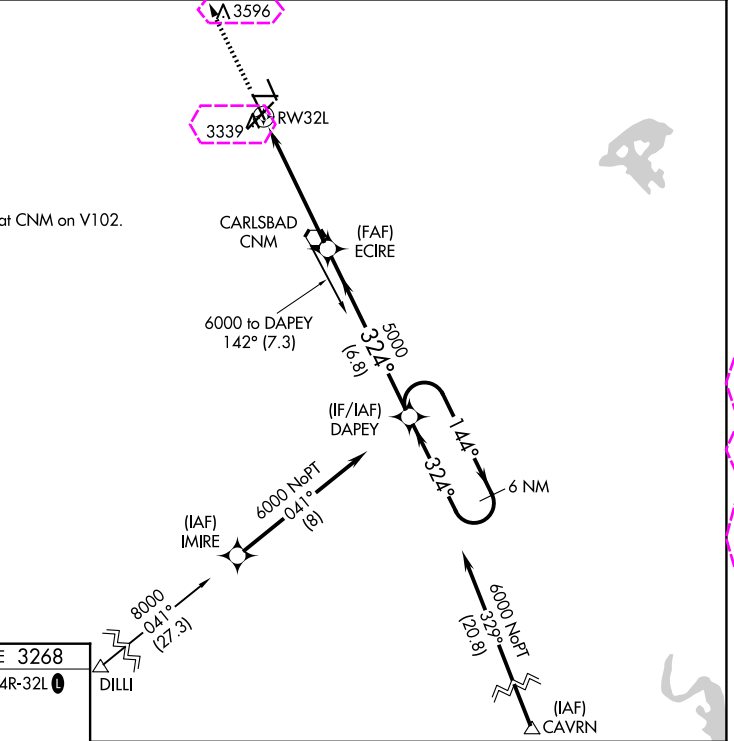
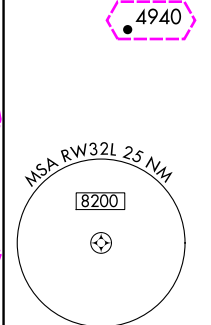
**⚠** DME/DME RNP-0.3 NA. When local altimeter setting not received, use Artesia Muni altimeter setting and increase all MDA 120 ft. Increase LP Cats C/D visibility to 1½ mile, LNAV Cats C/D to 1¾ mile and Circling Cat C to 2¼ mile. VDP NA when using Artesia Muni altimeter setting.

**⚠** MISSED APPROACH: Climb to 6000 direct BICNA and hold.

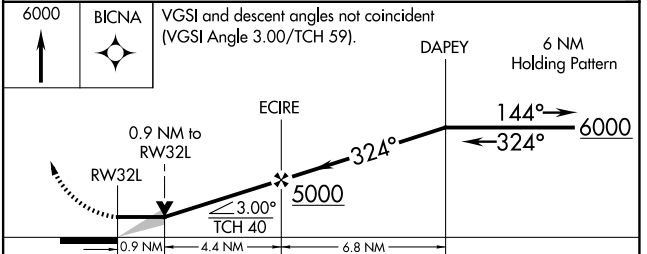
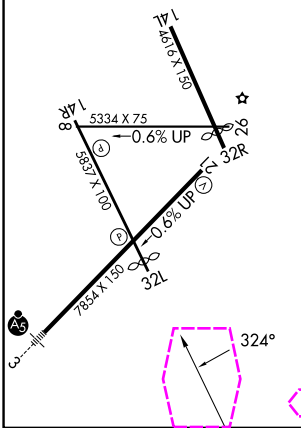
ASOS <b>118.375</b>	ALBUQUERQUE CENTER <b>135.875 292.15</b>	UNICOM <b>123.0 (CTAF) 0</b>
------------------------	---	---------------------------------



Procedure NA for arrivals at CNM on V102.



ELEV 3295	<b>D</b>	TDZE 3268
MIRL Rwy 3-21, 8-26 and 14R-32L		



CATEGORY	A	B	C	D
LP MDA	3720-1	452 (500-1)	3720-1¾	452 (500-1¾)
LNAV MDA	3740-1	472 (500-1)	3740-1¾	472 (500-1¾)
<b>CIRCLING</b>	3740-1 445 (500-1)	3780-1 485 (500-1)	3960-1¾ 665 (700-1¾)	4260-3 965 (1000-3)

CARLSBAD, NEW MEXICO  
Amdt 1D 10SEP20

32°20'N-104°16'W

# CAVERN CITY AIR TRML (CNM) RNAV (GPS) RWY 32L

SW-1, 30 OCT 2025 to 27 NOV 2025

SW-1, 30 OCT 2025 to 27 NOV 2025

CARLSBAD, NEW MEXICO

AL-71 (FAA)

25331

WAAS CH <b>78226</b> <b>W32A</b>	APP CRS <b>324°</b>	Rwy Ldg TDZE Apt Elev	<b>5452</b> <b>3268</b> <b>3295</b>
--	------------------------	-----------------------------	---

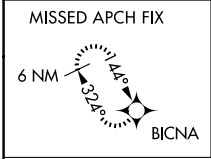
# RNAV (GPS) RWY 32L

CAVERN CITY AIR TRML (CNM)

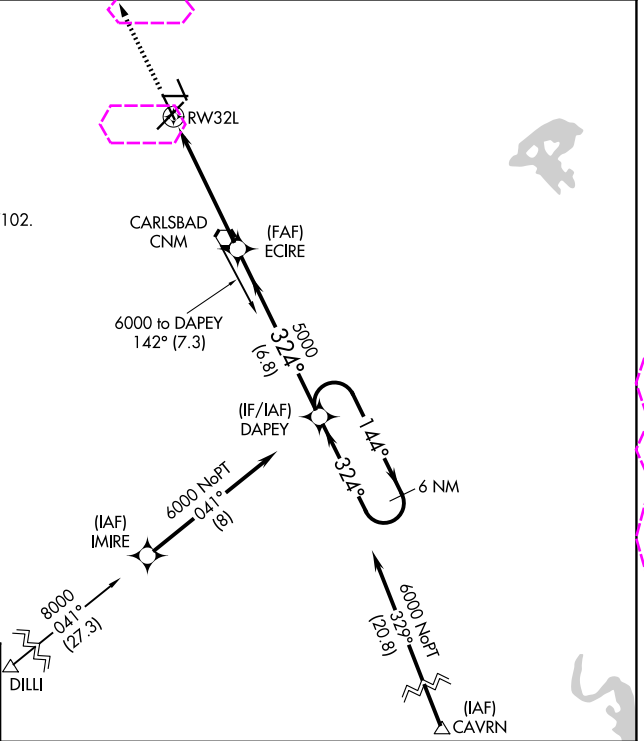
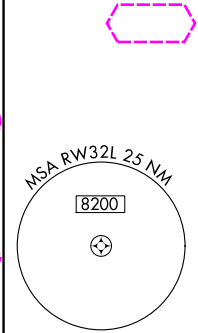
**⚠** DME/DME RNP-0.3 NA. When local altimeter setting not received, use Artesia Muni altimeter setting and increase all MDA 120 ft. Increase LP Cats C/D visibility to 1½ mile, LNAV Cats C/D to 1¾ mile and Circling Cat C to 2¼ mile. VDP NA when using Artesia Muni altimeter setting.

**⚠** MISSED APPROACH: Climb to 6000 direct BICNA and hold.

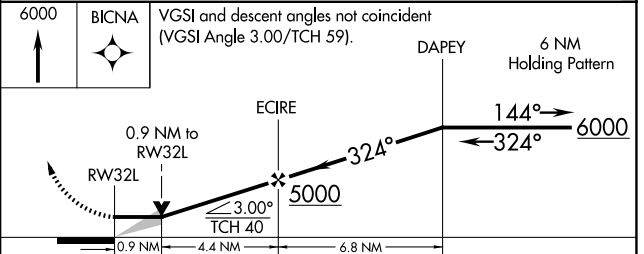
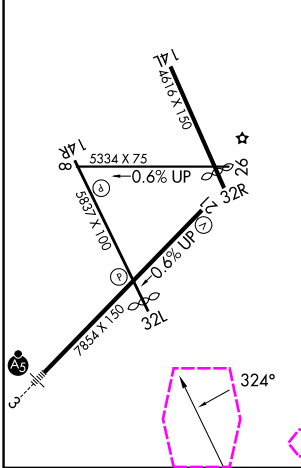
ASOS <b>118.375</b>	ALBUQUERQUE CENTER <b>135.875 292.15</b>	UNICOM <b>123.0 (CTAF) 0</b>
------------------------	---	---------------------------------



Procedure NA for arrivals at CNM on V102.



ELEV 3295	<b>D</b>	TDZE 3268
MIRL Rwy 3-21, 8-26 and 14R-32L		



CATEGORY	A	B	C	D
LP MDA	3720-1	452 (500-1)	3720-1⅜	452 (500-1⅜)
LNAV MDA	3740-1	472 (500-1)	3740-1⅜	472 (500-1⅜)
<b>CIRCLING</b>	3740-1	3780-1	3960-1¾	4260-3
	445 (500-1)	485 (500-1)	665 (700-1¾)	965 (1000-3)

CARLSBAD, NEW MEXICO  
Amdt 1D 10SEP20

32°20'N-104°16'W

# CAVERN CITY AIR TRML (CNM) RNAV (GPS) RWY 32L

SW-1, 27 NOV 2025 to 25 DEC 2025

SW-1, 27 NOV 2025 to 25 DEC 2025