

CARLSBAD, NEW MEXICO

AL-71 (FAA)

25163

WAAS CH 61034 W14A	APP CRS 144°	Rwy Ldg TDZE Apt Elev	5837 3270 3295
--	------------------------	-----------------------------	---

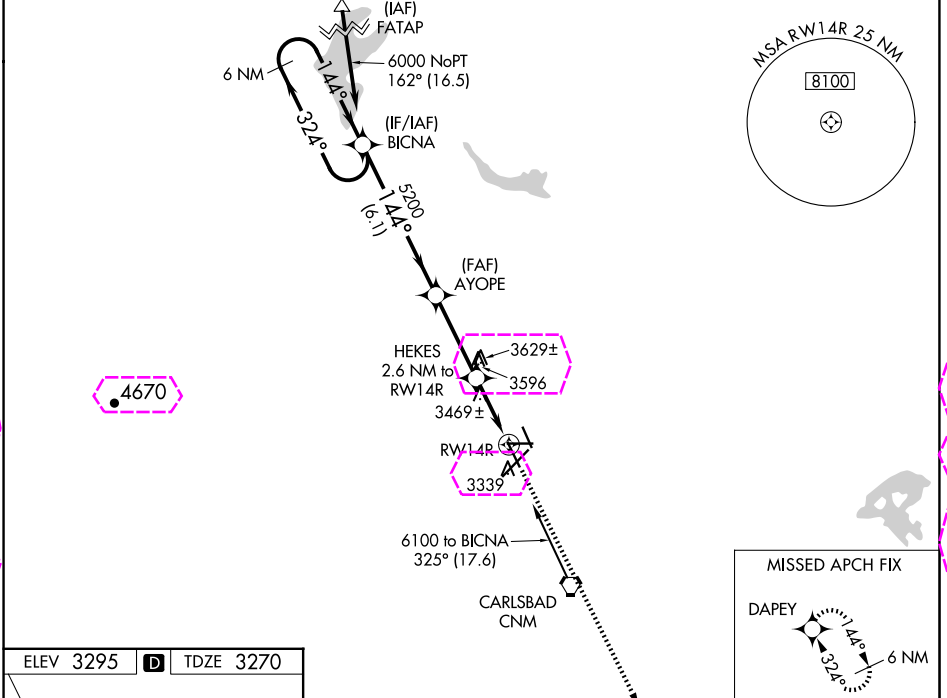
RNAV (GPS) RWY 14R

CAVERN CITY AIR TRML (CNM)

⚠ For uncompensated Baro-VNAV systems, LNAV/VNAV NA below -10°C (14°F) or above 54°C (130°F). DME/DME RNP-0.3 NA. Helicopter visibility reduction below 1 SM NA.

MISSED APPROACH: Climb to 6000 direct DAPEY and hold.

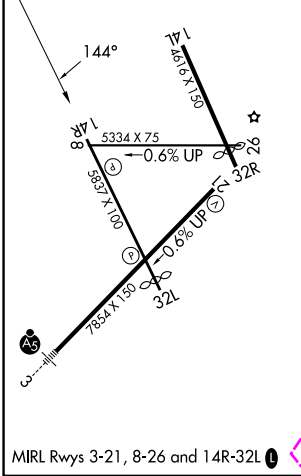
ASOS 118.375	ALBUQUERQUE CENTER 135.875 292.15	UNICOM 123.0 (CTAF) 0
------------------------	---	---------------------------------



SW-1, 30 OCT 2025 to 27 NOV 2025

SW-1, 30 OCT 2025 to 27 NOV 2025

ELEV 3295	D	TDZE 3270
-----------	----------	-----------



VGSI and RNAV glidepath not coincident (VGSI Angle 3.00/TCH 56).

6000	DAPEY	*LNAV only.
6000	↑	⬠

CATEGORY	A	B	C	D
LPV DA		3520-1	250 (300-1)	
LNAV/VNAV DA		3520-1	250 (300-1)	
LNAV MDA	3720-1	450 (500-1)	3720-1 ³ / ₈	450 (500-1 ³ / ₈)
CIRCLING	3720-1 425 (500-1)	3780-1 485 (500-1)	3960-1 ³ / ₄ 665 (700-1 ³ / ₄)	4260-3 965 (1000-3)

CARLSBAD, NEW MEXICO
Amdt 1A 05MAR15

32°20'N-104°16'W

RNAV (GPS) RWY 14R

CAVERN CITY AIR TRML (CNM)

CARLSBAD, NEW MEXICO

AL-71 (FAA)

25331

WAAS CH 61034 W14A	APP CRS 144°	Rwy Ldg TDZE Apt Elev	5837 3270 3295
--	------------------------	-----------------------------	---

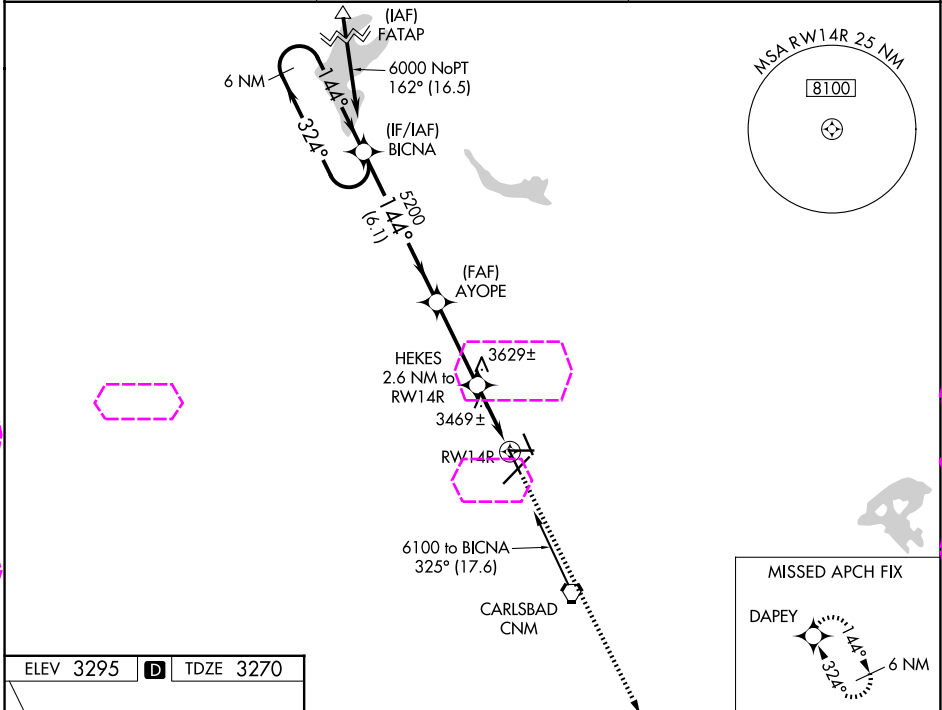
RNAV (GPS) RWY 14R

CAVERN CITY AIR TRML (CNM)

⚠ For uncompensated Baro-VNAV systems, LNAV/VNAV NA below -10°C (14°F) or above 54°C (130°F). DME/DME RNP-0.3 NA. Helicopter visibility reduction below 1 SM NA.

MISSED APPROACH: Climb to 6000 direct DAPEY and hold.

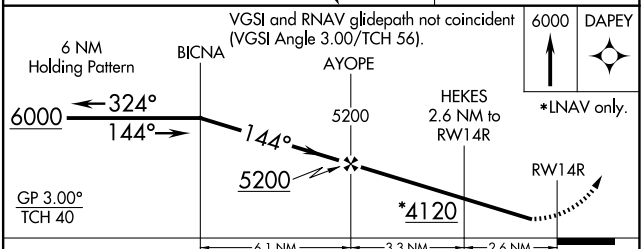
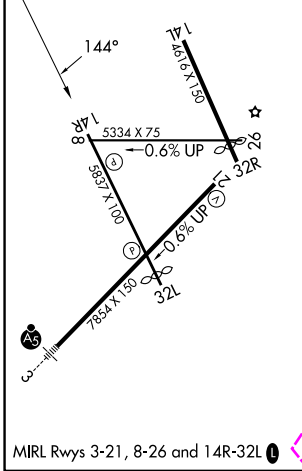
ASOS 118.375	ALBUQUERQUE CENTER 135.875 292.15	UNICOM 123.0 (CTAF) 0
------------------------	---	---------------------------------



SW-1, 127 NOV 2025 to 25 DEC 2025

SW-1, 127 NOV 2025 to 25 DEC 2025

ELEV 3295	D	TDZE 3270
-----------	----------	-----------



CATEGORY	A	B	C	D
LPV DA		3520-1	250 (300-1)	
LNAV/VNAV DA		3520-1	250 (300-1)	
LNAV MDA	3720-1	450 (500-1)	3720-1 $\frac{3}{8}$	450 (500-1 $\frac{3}{8}$)
CIRCLING	3720-1 425 (500-1)	3780-1 485 (500-1)	3960-1 $\frac{3}{4}$ 665 (700-1 $\frac{3}{4}$)	4260-3 965 (1000-3)

CARLSBAD, NEW MEXICO
Amdt 1A 05MAR15

32°20'N-104°16'W

RNAV (GPS) RWY 14R

CAVERN CITY AIR TRML (CNM)