

BUFFALO, NEW YORK

AL-65 (FAA)

25051

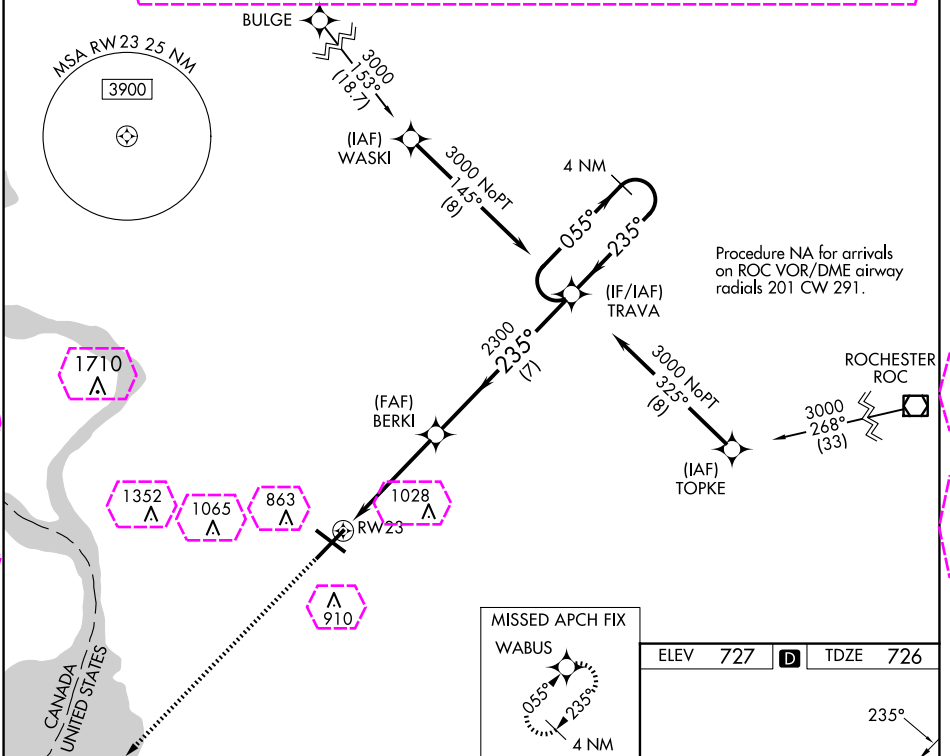
WAAS CH <b>77511</b> <b>W23A</b>	APP CRS <b>235°</b>	Rwy Idg <b>7569</b> TDZE <b>726</b> Apt Elev <b>727</b>
--	------------------------	--

# RNAV (GPS) Y RWY 23

BUFFALO NIAGARA INTL (BUF)

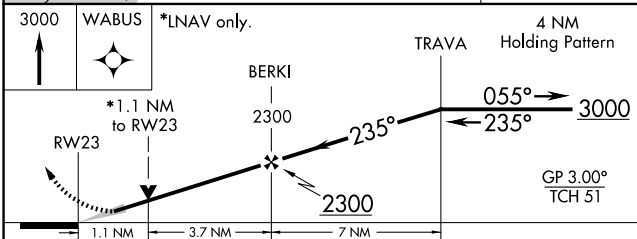
RNP APCH - GPS	ALSF-2	MISSED APPROACH: Climb to 3000 direct WABUS and hold.
For uncompensated Baro-VNAV systems, LNAV/VNAV NA below -17°C or above 54°C		

D-ATIS <b>135.35</b>	BUFFALO APP CON <b>126.15 263.125</b>	BUFFALO TOWER <b>120.5 257.8</b>	GND CON <b>133.2 257.8</b>	CLNC DEL <b>124.7 257.8</b>	CPDLC
-------------------------	--	-------------------------------------	-------------------------------	--------------------------------	-------

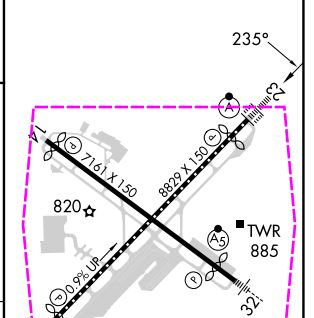


NE-2, 30 OCT 2025 to 27 NOV 2025

NE-2, 30 OCT 2025 to 27 NOV 2025



ELEV	727	TDZE	726
------	-----	------	-----



CATEGORY	A	B	C	D
LPV DA		926/18	200 (200-½)	
LNAV/VNAV DA		1050/30	324 (400-¾)	
LNAV MDA	1140/24	414 (500-½)	1140/40	414 (500-¾)
<b>CIRCLING</b>	1200-1	473 (500-1)	1220-1½	1340-2 613 (700-2)

REIL Rwy 14  
TDZ/CL Rws 5 and 23  
HIRL Rws 5-23 and 14-32

BUFFALO, NEW YORK  
Amdt 2D 02DEC21

42°56'N-78°44'W

# BUFFALO NIAGARA INTL (BUF) RNAV (GPS) Y RWY 23

BUFFALO, NEW YORK

AL-65 (FAA)

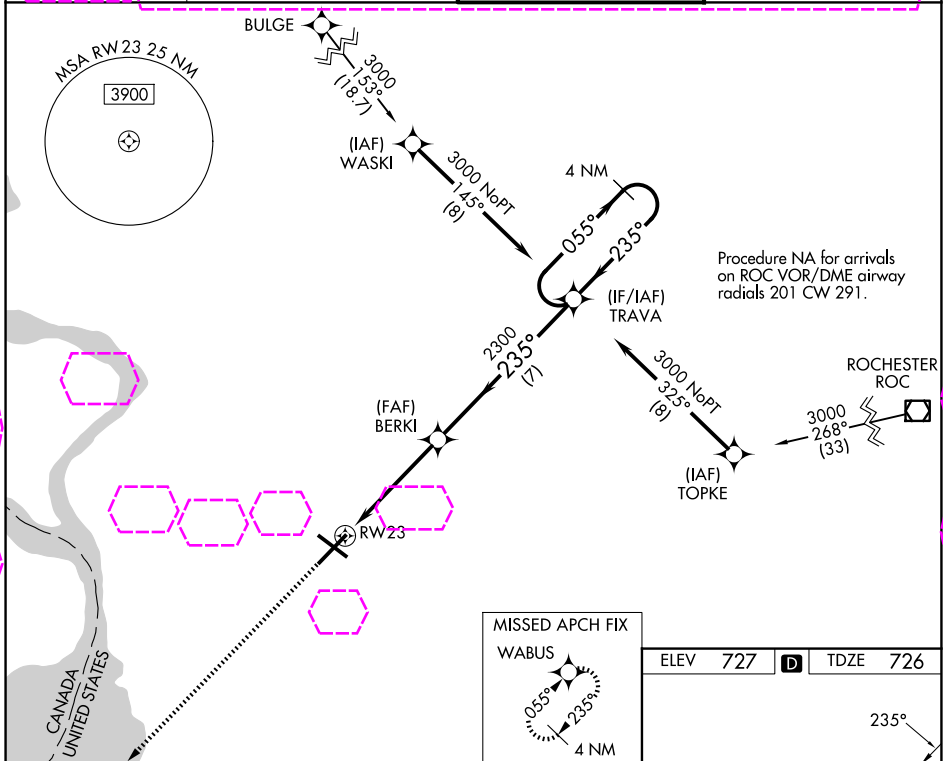
25331

WAAS CH <b>77511</b> <b>W23A</b>	APP CRS <b>235°</b>	Rwy Ldg TDZE Apt Elev	<b>7569</b> <b>726</b> <b>727</b>
--	------------------------	-----------------------------	---

# RNAV (GPS) Y RWY 23

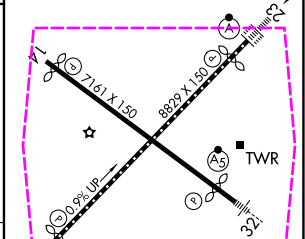
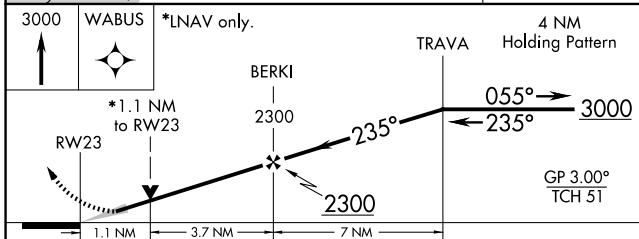
BUFFALO NIAGARA INTL (BUF)

RNP APCH - GPS		ALSF-2	
▼ For uncompensated Baro-VNAV systems, LNAV/VNAV NA below -17°C or above 54°C		MISSED APPROACH: Climb to 3000 direct WABUS and hold.	
D-ATIS <b>135.35</b>	BUFFALO APP CON <b>126.15 263.125</b>	BUFFALO TOWER <b>120.5 257.8</b>	GND CON <b>133.2 257.8</b>



NE-2, 127 NOV 2025 to 25 DEC 2025

NE-2, 27 NOV 2025 to 25 DEC 2025



CATEGORY	A	B	C	D
LPV DA		926/18	200 (200-½)	
LNAV/VNAV DA		1050/30	324 (400-¾)	
LNAV MDA	1140/24	414 (500-½)	1140/40	414 (500-¾)
CIRCLING	1200-1	473 (500-1)	1220-1½	1340-2
			493 (500-1½)	613 (700-2)

REIL Rwy 14  
TDZL/RCLS Rwy 5 and 23  
HIRL Rwy 5-23 and 14-32

BUFFALO, NEW YORK  
Amdt 2D 02DEC21

42°56'N-78°44'W

# BUFFALO NIAGARA INTL (BUF) RNAV (GPS) Y RWY 23