

BUFFALO, NEW YORK

AL-65 (FAA)

25051

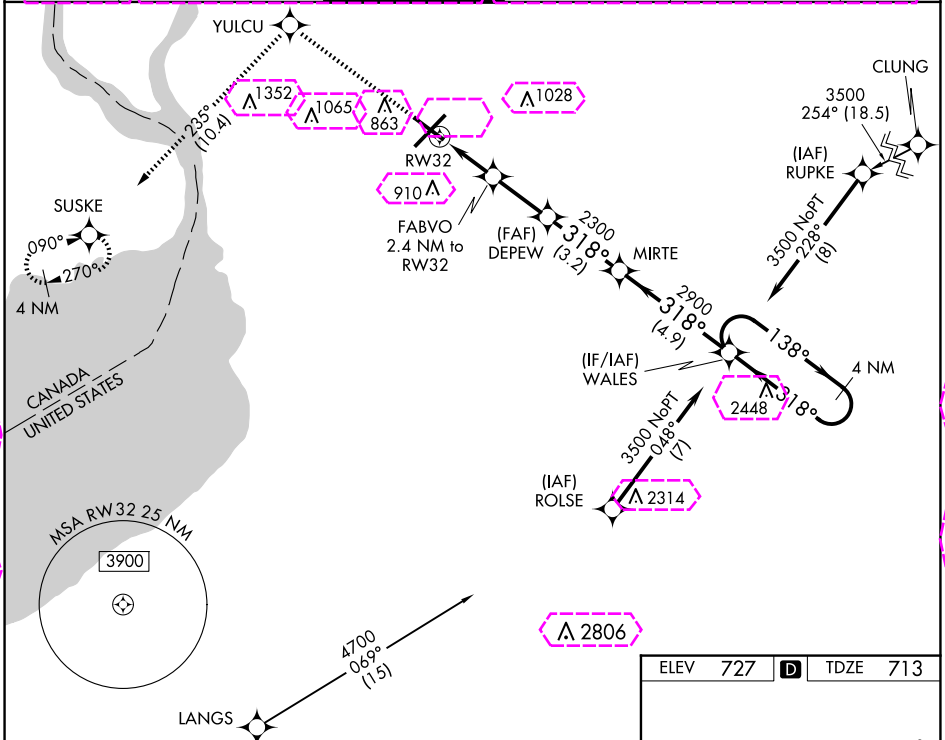
WAAS CH <b>81811</b> <b>W32A</b>	APP CRS <b>318°</b>	Rwy Idg <b>6121</b> TDZE <b>713</b> Apt Elev <b>727</b>
--	------------------------	--

# RNAV (GPS) RWY 32

BUFFALO NIAGARA INTL (BUF)

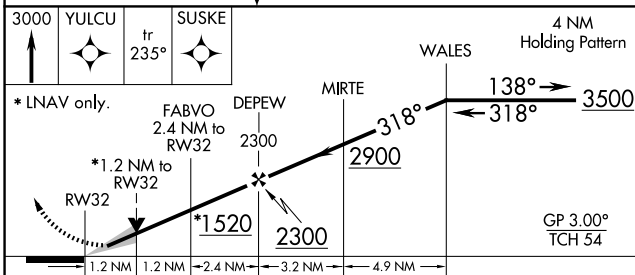
RNP APCH - GPS	MALSR	MISSED APPROACH: Climb to 3000 direct YULCU on track 235° to SUSKE and hold.
For uncompensated Baro-VNAV systems LNAV/VNAV NA below -17°C or above 54°C. For inop ALS, increase LNAV/VNAV visibility all Cats to 1 SM. Inop table does not apply to LPV all Cats.		

D-ATIS <b>135.35</b>	BUFFALO APP CON <b>126.15 263.125</b>	BUFFALO TOWER <b>120.5 257.8</b>	GND CON <b>133.2 257.8</b>	CLNC DEL <b>124.7 257.8</b>	CPDLC
-------------------------	--	-------------------------------------	-------------------------------	--------------------------------	-------

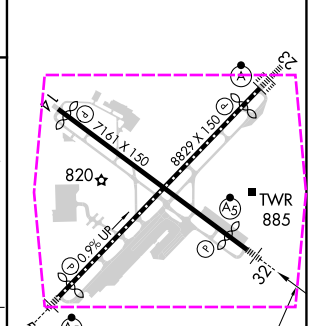


NE-2, 30 OCT 2025 to 27 NOV 2025

NE-2, 30 OCT 2025 to 27 NOV 2025



ELEV	727	D	TDZE	713
------	-----	---	------	-----



CATEGORY	A	B	C	D
LPV DA		913-1/2	200 (200-1/2)	
LNAV/VNAV DA		1092-5/8	379 (400-5/8)	
LNAV MDA	1140-1/2	427 (500-1/2)	1140-3/4	427 (500-3/4)
<b>CIRCLING</b>	1200-1	473 (500-1)	1220-1/2	1340-2
			493 (500-1/2)	613 (700-2)

REIL Rwy 14  
TDZ/CL Rwys 5 and 23  
HIRL Rwys 5-23 and 14-32

BUFFALO, NEW YORK  
Amdt 2C 02DEC21

42°56'N-78°44'W

# BUFFALO NIAGARA INTL (BUF) RNAV (GPS) RWY 32

