

BUFFALO, NEW YORK

AL-65 (FAA)

25051

LOC I-GBI 108.5	APP CRS 055°	Rwy Idg 7569 TDZE 708 Apt Elev 727
---------------------------	------------------------	---

ILS or LOC RWY 5

BUFFALO NIAGARA INTL (BUF)

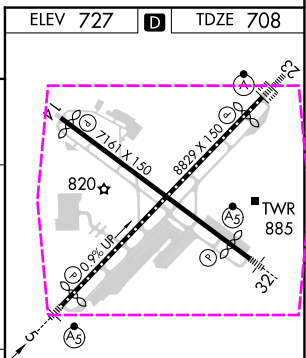
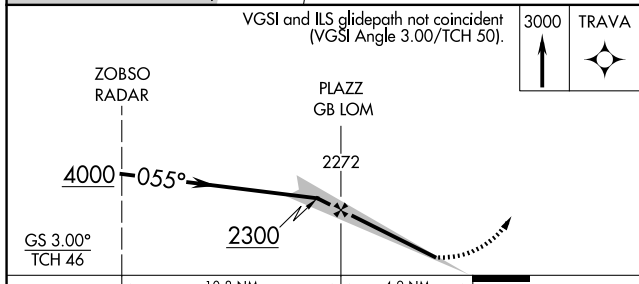
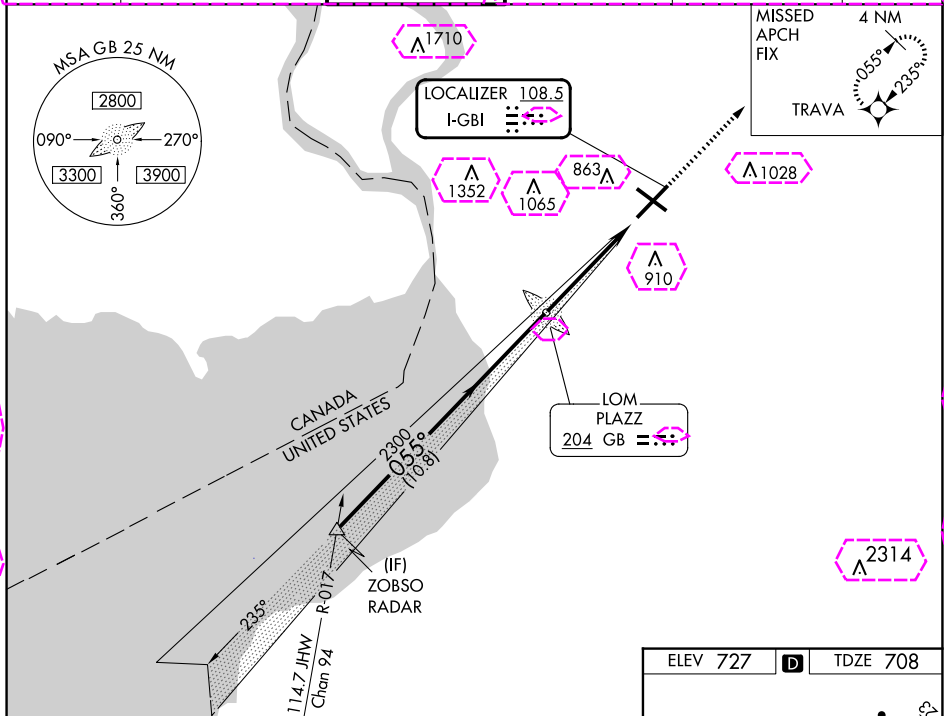
RADAR required for procedure entry. RNP APCH - GPS. ADF required for LOC only.



MISSED APPROACH: Climb to 3000 direct TRAVA and hold.

Autopilot coupled approach NA. For inop ALS, increase S-LOC 5 Cats C and D visibility to RVR 5500.

D-ATIS 135.35	BUFFALO APP CON 126.15 263.125	BUFFALO TOWER 120.5 257.8	GND CON 133.2 257.8	CLNC DEL 124.7 257.8	CPDLC
-------------------------	--	-------------------------------------	-------------------------------	--------------------------------	-------



CATEGORY	A	B	C	D
S-ILS 5	908/18 200 (200-1/2)			
S-LOC 5	1060/24	352 (400-1/2)	1060/30	352 (400-5/8)
CIRCLING	1200-1	473 (500-1)	1220-1 1/2	1340-2
			493 (500-1/2)	613 (700-2)

Knots	60	90	120	150	180
Min:Sec	4:54	3:16	2:27	1:58	1:38

BUFFALO, NEW YORK
Amdt 18 02DEC21

42°56'N-78°44'W

BUFFALO NIAGARA INTL (BUF)
ILS or LOC RWY 5

NE-2, 30 OCT 2025 to 27 NOV 2025

BUFFALO, NEW YORK

AL-65 (FAA)

25331

LOC I-GBI 108.5	APP CRS 055°	Rwy Ldg 7569
		TDZE 708
		Apt Elev 727

ILS or LOC RWY 5

BUFFALO NIAGARA INTL (BUF)

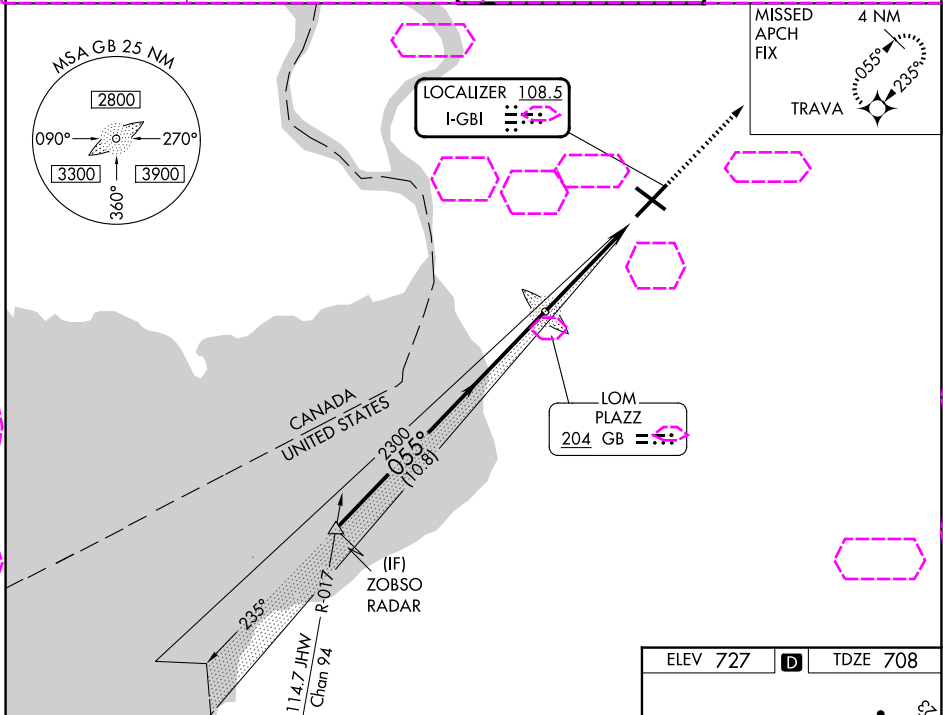
RADAR required for procedure entry. RNP APCH - GPS. ADF required for LOC only.

Autopilot coupled approach NA. For inop ALS, increase S-LOC 5 Cats C and D visibility to RVR 5500.



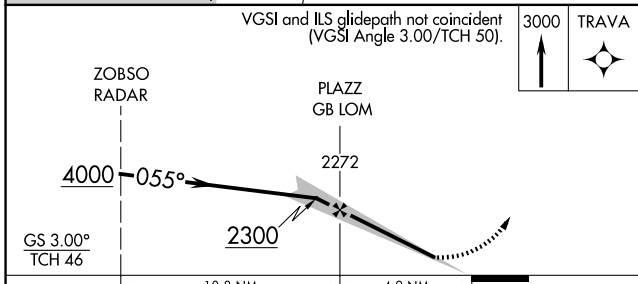
MISSED APPROACH: Climb to 3000 direct TRAVA and hold.

D-ATIS 135.35	BUFFALO APP CON 126.15 263.125	BUFFALO TOWER 120.5 257.8	GND CON 133.2 257.8
-------------------------	--	-------------------------------------	-------------------------------



NE-2, 27 NOV 2025 to 25 DEC 2025

NE-2, 27 NOV 2025 to 25 DEC 2025



ELEV 727	TDZE 708
----------	----------

REIL Rwy 14
TDZL/RCLS Rwys 5 and 23
HIRL Rwys 5-23 and 14-32

FAF to MAP 4.9 NM					
Knots	60	90	120	150	180
Min:Sec	4:54	3:16	2:27	1:58	1:38

CATEGORY	A	B	C	D
S-ILS 5	908/18 200 (200-½)			
S-LOC 5	1060/24	352 (400-½)	1060/30	352 (400-¾)
CIRCLING	1200-1	473 (500-1)	1220-1½ 493 (500-1½)	1340-2 613 (700-2)

BUFFALO, NEW YORK
Amdt 18 02DEC21

42°56'N-78°44'W

BUFFALO NIAGARA INTL (BUF)
ILS or LOC RWY 5