

BUFFALO, NEW YORK

AL-65 (FAA)

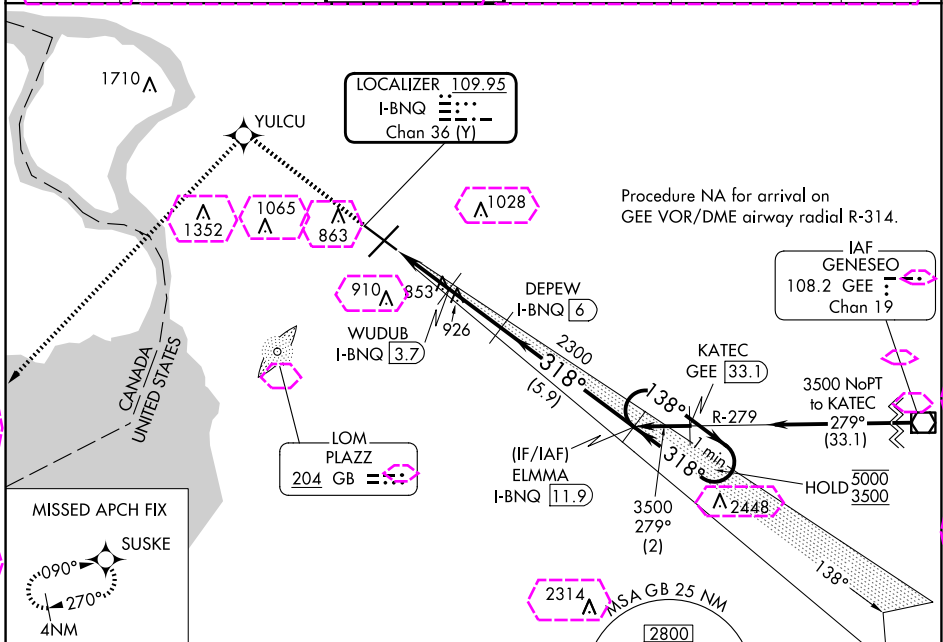
25051

LOC/DME I-BNQ 109.95	APP CRS 318°	Rwy Idg TDZE Apt Elev	6121 713 727
Chan 36 (Y)			

ILS or LOC RWY 32

BUFFALO NIAGARA INTL (BUF)

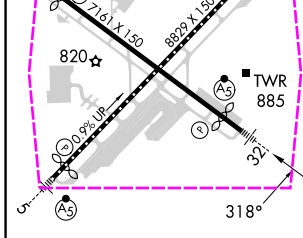
DME required. RNP APCH-GPS.			MALS R	MISSED APPROACH: Climb to 3000 direct YULCU and on track 235° to SUSKE and hold.	
D-ATIS 135.35	BUFFALO APP CON 126.15 263.125	BUFFALO TOWER 120.5 257.8	GND CON 133.2 257.8	CLNC DEL 124.7 257.8	CPDLC



NE-2, 30 OCT 2025 to 27 NOV 2025

NE-2, 30 OCT 2025 to 27 NOV 2025

ELEV 727	D	TDZE 713
----------	----------	----------



REIL Rwy 14
TDZ/CL Rwys 5 and 23
HIRL Rwys 5-23 and 14-32

3000	YULCU	tr 235°	SUSKE	DEPEW I-BNQ 6	ELMMA I-BNQ 11.9	One Minute Holding Pattern
				WUDUB I-BNQ 3.7	2300	138° → 5000 ← 318° 3500
				I-BNQ 2.3	1540	GS 3.00° TCH 54
				I-BNQ 1.2	2300	
					1.1 NM	1.4 NM
					2.3 NM	5.9 NM
CATEGORY	A		B		C	
S-ILS 32	913-1/2		200 (200-1/2)			
S-LOC 32	1120-1/2 407 (400-1/2)		1120-3/4 407 (400-3/4)			
CIRCLING	1200-1 473 (500-1)		1220-1 1/2 493 (500-1 1/2)		1340-2 613 (700-2)	

BUFFALO, NEW YORK
Amdt 3 02DEC21

42°56'N-78°44'W

BUFFALO NIAGARA INTL (BUF)

ILS or LOC RWY 32

BUFFALO, NEW YORK

AL-65 (FAA)

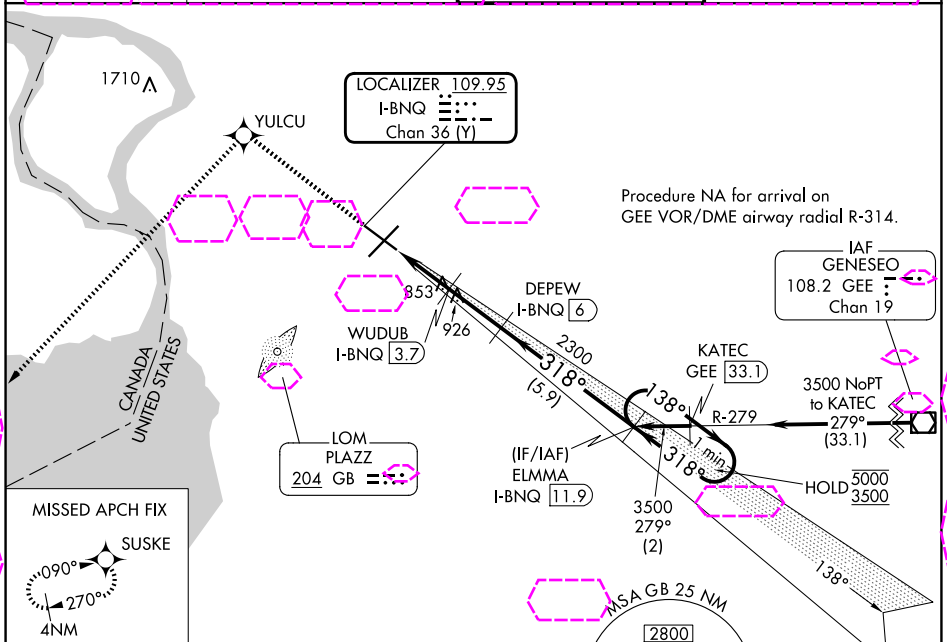
25331

LOC/DME I-BNQ 109.95 Chan 36 (Y)	APP CRS 318°	Rwy Ldg TDZE Apt Elev 6121 713 727
--	------------------------	--

ILS or LOC RWY 32

BUFFALO NIAGARA INTL (BUF)

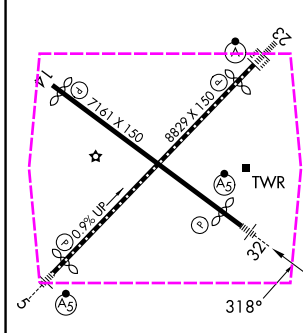
DME required. RNP APCH-GPS.		MALSR 	MISSED APPROACH: Climb to 3000 direct YULCU and on track 235° to SUSKE and hold.
D-ATIS 135.35	BUFFALO APP CON 126.15 263.125	BUFFALO TOWER 120.5 257.8	GND CON 133.2 257.8



NE-2 27 NOV 2025 to 25 DEC 2025

NE-2 27 NOV 2025 to 25 DEC 2025

ELEV 727	D	TDZE 713
----------	---	----------



CATEGORY	A	B	C	D
S-ILS 32	913-1/2 200 (200-1/2)			
S-LOC 32	1120-1/2 407 (400-1/2)	1120-3/4 407 (400-3/4)		
CIRCLING	1200-1 473 (500-1)	1220-1 1/2 493 (500-1 1/2)	1340-2 613 (700-2)	

REIL Rwy 14
TDZL/RCLS Rwys 5 and 23
HIRL Rwys 5-23 and 14-32

BUFFALO, NEW YORK
Amdt 3 02DEC21

42°56'N-78°44'W

BUFFALO NIAGARA INTL (BUF)

ILS or LOC RWY 32