

BUFFALO, NEW YORK

AL-65 (FAA)

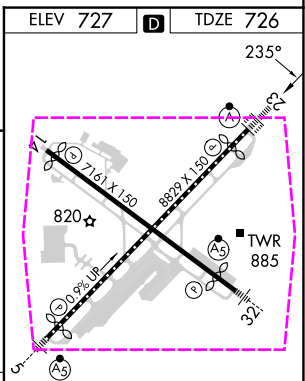
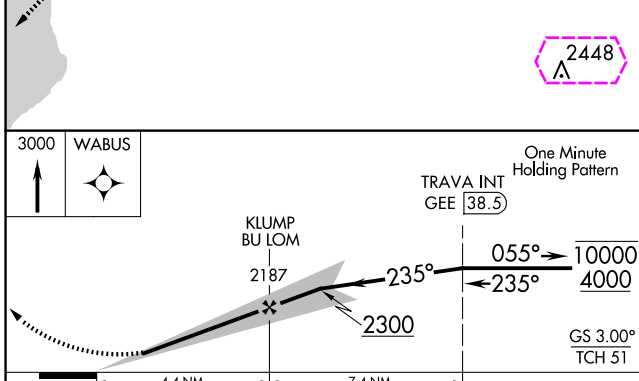
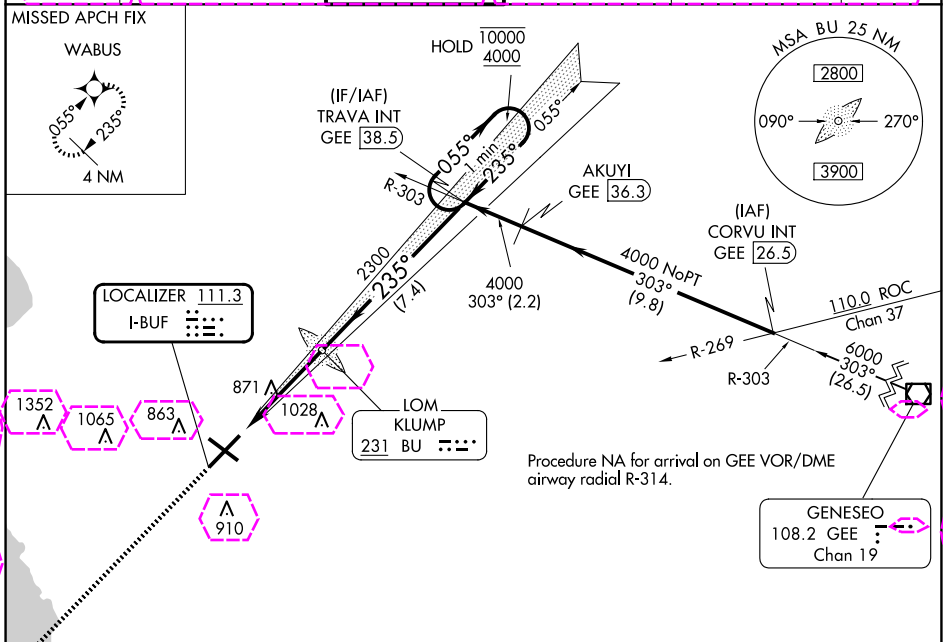
25051

LOC I-BUF <b>111.3</b>	APP CRS <b>235°</b>	Rwy Idg <b>7569</b>
		TDZE <b>726</b>
		Apt Elev <b>727</b>

# ILS or LOC RWY 23

BUFFALO NIAGARA INTL (BUF)

DME required. RNP APCH - GPS. ADF required for LOC only.		ALSF-2	MISSED APPROACH: Climb to 3000 direct WABUS and hold.		
▼ For inop ALS, increase S-LOC 23 Cats C and D visibility to RVR 6000.		(A)			
D-ATIS <b>135.35</b>	BUFFALO APP CON <b>126.15 263.125</b>	BUFFALO TOWER <b>120.5 257.8</b>	GND CON <b>133.2 257.8</b>	CLNC DEL <b>124.7 257.8</b>	CPDLC



CATEGORY	A	B	C	D
S-ILS 23	926/18 200 (200-½)			
S-LOC 23	1140/24	414 (500-½)	1140/40	414 (500-¾)
<b>C CIRCLING</b>	1200-1	473 (500-1)	1220-1½ 493 (500-1½)	1340-2 613 (700-2)

Knots	60	90	120	150	180
Min:Sec	4:24	2:56	2:12	1:46	1:28

BUFFALO, NEW YORK  
Amdt 34 02DEC21

42°56'N-78°44'W

BUFFALO NIAGARA INTL (BUF)  
ILS or LOC RWY 23

BUFFALO, NEW YORK

AL-65 (FAA)

25331

LOC I-BUF <b>111.3</b>	APP CRS <b>235°</b>	Rwy Ldg <b>7569</b>
		TDZE <b>726</b>
		Apt Elev <b>727</b>

# ILS or LOC RWY 23

BUFFALO NIAGARA INTL (BUF)

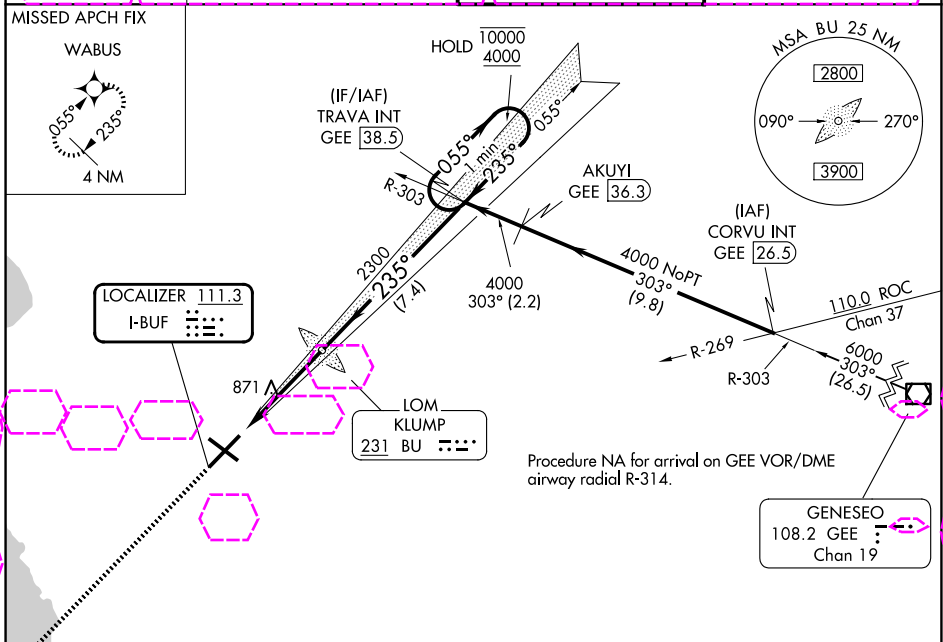
DME required. RNP APCH - GPS. ADF required for LOC only.

For inop ALS, increase S-LOC 23 Cats C and D visibility to RVR 6000.

ALSF-2

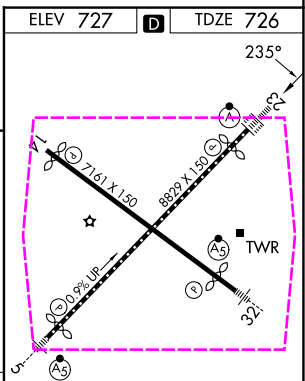
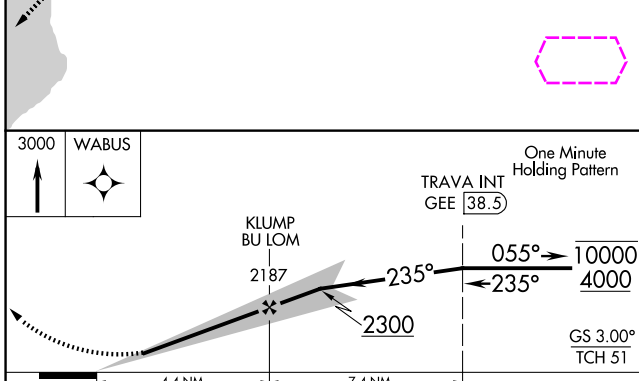
MISSED APPROACH: Climb to 3000 direct WABUS and hold.

D-ATIS <b>135.35</b>	BUFFALO APP CON <b>126.15 263.125</b>	BUFFALO TOWER <b>120.5 257.8</b>	GND CON <b>133.2 257.8</b>
-------------------------	--	-------------------------------------	-------------------------------



NE-2, 27 NOV 2025 to 25 DEC 2025

NE-2, 27 NOV 2025 to 25 DEC 2025



CATEGORY	A	B	C	D
S-ILS 23	926/18 200 (200-½)			
S-LOC 23	1140/24	414 (500-½)	1140/40	414 (500-¾)
CIRCLING	1200-1	473 (500-1)	1220-1½ 493 (500-1½)	1340-2 613 (700-2)

REIL Rwy 14  
TDZL/RCLS Rws 5 and 23  
HIRL Rws 5-23 and 14-32

FAF to MAP 4.4 NM

Knots	60	90	120	150	180
Min:Sec	4:24	2:56	2:12	1:46	1:28

BUFFALO, NEW YORK  
Amdt 34 02DEC21

42°56'N-78°44'W

BUFFALO NIAGARA INTL (BUF)  
ILS or LOC RWY 23