

BELLEVILLE, ILLINOIS

AL-46 (FAA)

25303

WAAS CH 50518 W32A	APP CRS 319°	Rwy Ldg 10000	TDZE 442
		Apt Elev 459	

RNAV (GPS) RWY 32R

SCOTT AFB/MIDAMERICA ST LOUIS (BLV)

RNP APCH - GPS.

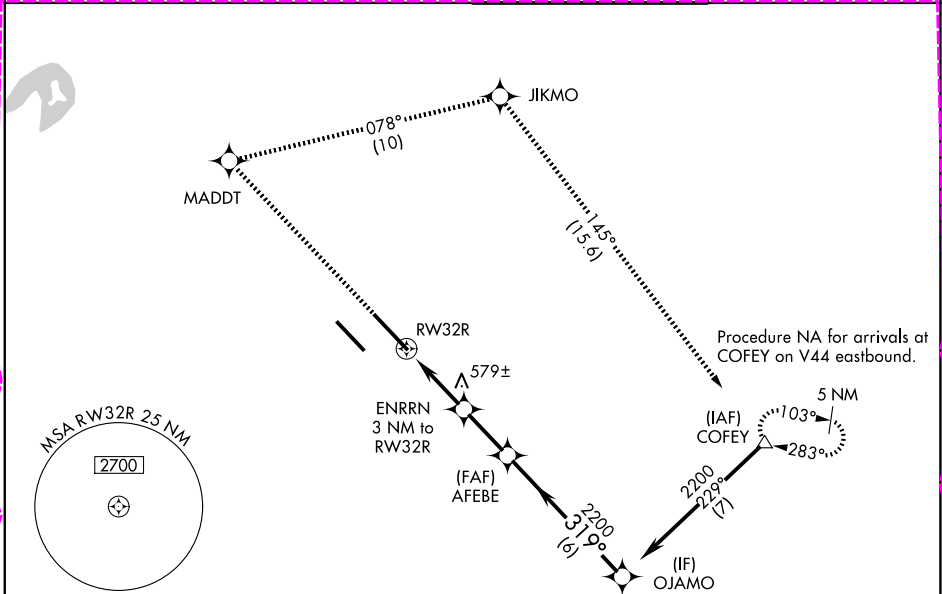
ASR
 For uncompensated Baro-VNAV systems, procedure NA below -18°C or above 54°C.
 For inop ALS, increase LNAV/VNAV all Cats visibility to RVR 5500.

MALSR



MISSED APPROACH: Climb to 2300 direct MADDT and right turn on track 078° to JIKMO and on track 145° to COFEY and hold.

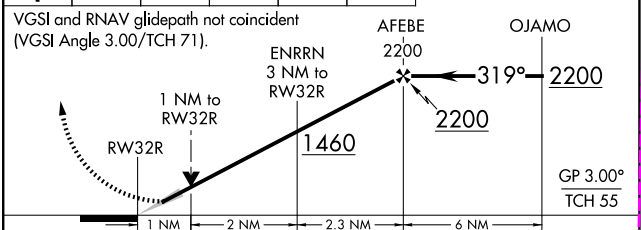
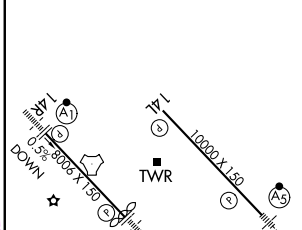
ATIS 128.7 256.7	ST LOUIS APP CON 125.2 281.5	SCOTT TOWER 128.25 253.5	GND CON 119.2 275.8
----------------------------	--	------------------------------------	-------------------------------



EC-3: 30 OCT 2025 to 27 NOV 2025

EC-3: 30 OCT 2025 to 27 NOV 2025

ELEV 459	D	TDZE 442	2300	MADDT	JIKMO	COFEY
			↑	✧	tr 078°	✧
					tr 145°	△



CATEGORY	A	B	C	D
LPV DA	642/24		200 (200-½)	
LNAV/VNAV DA	804/35		362 (400-¾)	
LNAV MDA	840/24		840/35	
	398 (400-½)		398 (400-¾)	
CIRCLING	1000-1	1120-1	1240-2¼	1240-2½
	541 (600-1)	661 (700-1)	781 (800-2¼)	781 (800-2½)

REIL Rwy 14L
 HIRL Rwy 14R-32L and 14L-32R

BELLEVILLE, ILLINOIS

Orig-F 08SEP22

SCOTT AFB/MIDAMERICA ST LOUIS (BLV)

38°33'N-89°50'W

RNAV (GPS) RWY 32R

BELLEVILLE, ILLINOIS

AL-46 (FAA)

25331

WAAS CH 50518 W32A	APP CRS 319°	Rwy Ldg TDZE Apt Elev	10000 442 459
--------------------------	-----------------	-----------------------------	---------------------

RNAV (GPS) Y RWY 32R

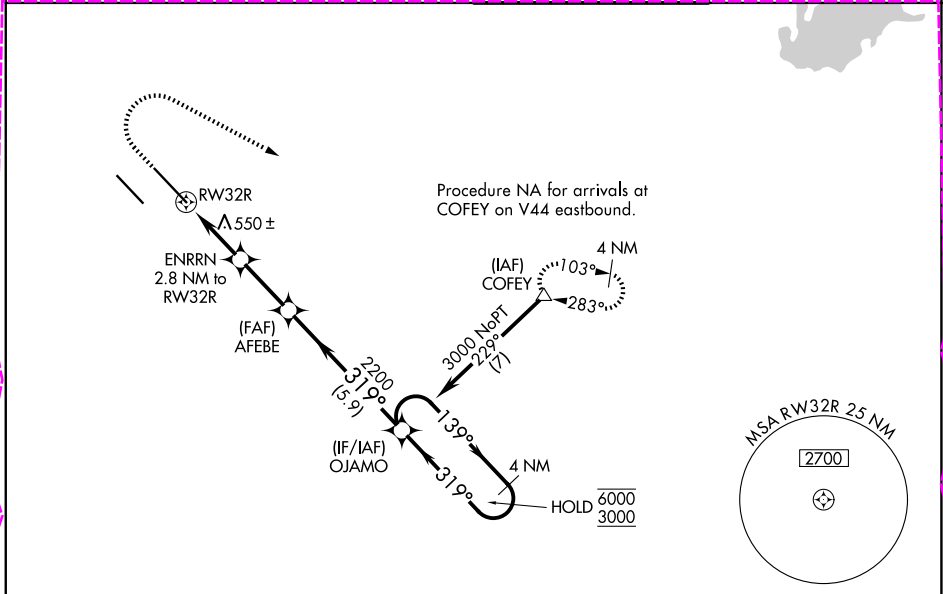
SCOTT AFB/MIDAMERICA ST LOUIS (BLV)

RNP APCH - GPS.

ASR For uncompensated Baro-VNAV systems, LNAV/VNAV NA below -15°C or above 54°C. Simultaneous approach authorized. *RVR 1800 authorized with use of FD or AP or HUD to DA.

MALSR
MISSED APPROACH: Climb to 1500 then climbing right turn to 3000 direct COFEY and hold.

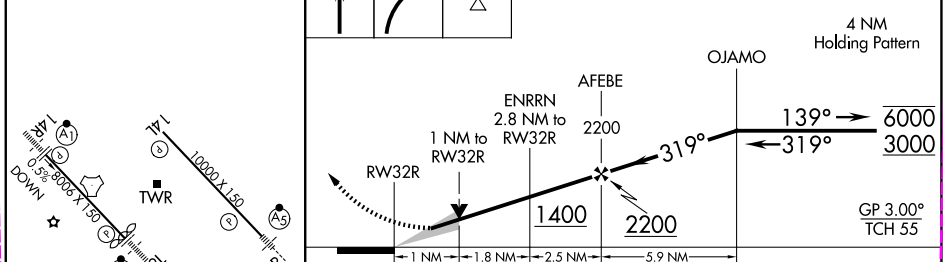
ATIS 128.7 256.7	ST LOUIS APP CON 125.2 281.5	SCOTT TOWER 128.25 253.5	GND CON 119.2 275.8
----------------------------	--	------------------------------------	-------------------------------



EC-3 127 NOV 2025 to 25 DEC 2025

EC-3 27 NOV 2025 to 25 DEC 2025

ELEV 459	D TDZE 442	1500	3000	COFEY	VGSI and RNAV glidepath not coincident (VGSI Angle 3.00/TCH 71).
----------	-------------------	------	------	-------	--



CATEGORY	A	B	C	D
LPV DA*	642/24		200 (200-½)	
LNAV/VNAV DA	830/35		388 (400-¾)	
LNAV MDA	840/24 398 (400-½)		840/35 398 (400-¾)	
CIRCLING	1000-1 541 (600-1)	1120-1 661 (700-1)	1240-2¼ 781 (800-2¼)	1240-2½ 781 (800-2½)

BELLEVILLE, ILLINOIS
Amdt 1 27NOV25

SCOTT AFB/MIDAMERICA ST LOUIS (BLV)

38°33'N-89°50'W

RNAV (GPS) Y RWY 32R