

BELLINGHAM, WASHINGTON

AL-45 (FAA)

25219

WAAS CH 86223 W34A	APP CRS 344°	Rwy Ldg TDZE 171 Apt Elev 171	6700
--	------------------------	---	-------------

RNAV (GPS) Y RWY 34

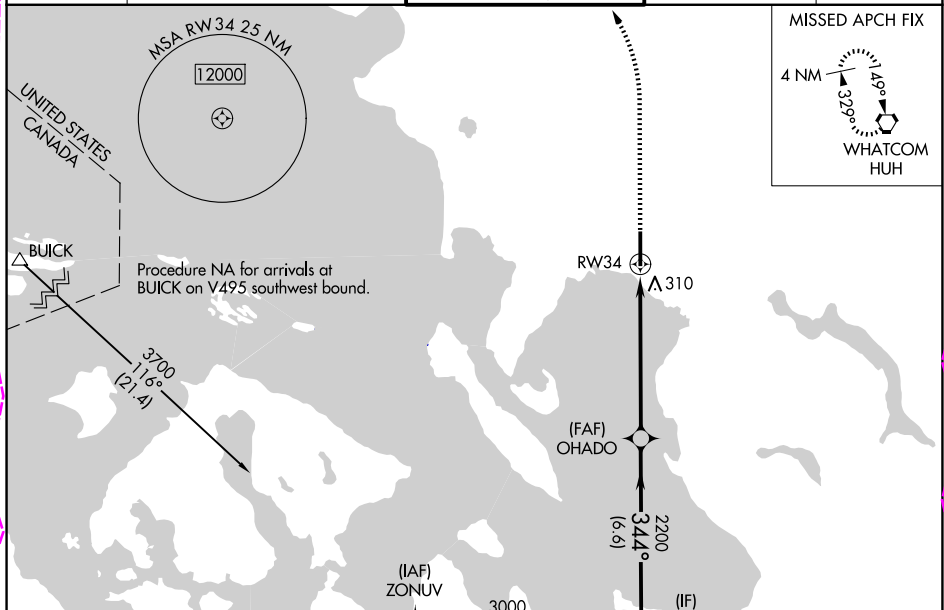
BELLINGHAM INTL (BLI)

RNP APCH - GPS.

For uncompensated Baro-VNAV systems, LNAV/VNAV NA below -10°C or above 54°C.
Baro-VNAV and VDP NA when using Friday Harbor altimeter setting. When local altimeter setting not received, use Friday Harbor altimeter setting and increase all DAs 67 feet and all MDA 80 feet; increase LPV all Cats visibility, LNAV/VNAV all Cats visibility, LNAV Cats C/D and Circling Cat C ¼ mile. Rwy 34 helicopter visibility reduction below ¾ SM NA.

MISSED APPROACH: Climb to 700 then climbing left turn to 3000 direct HUH VORTAC and hold, continue climb-in-hold to 3000.

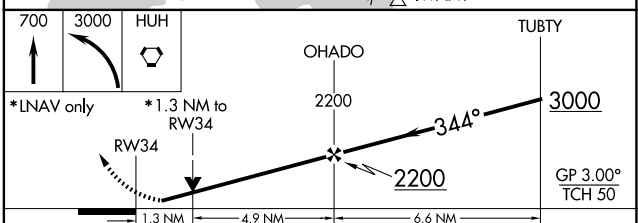
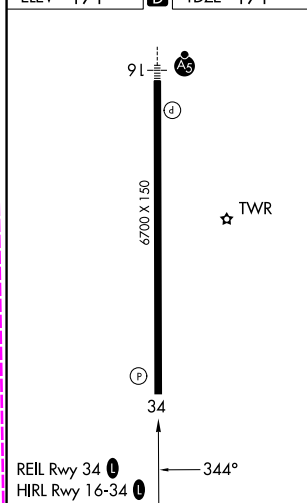
ATIS 134.45	VICTORIA TERMINAL APP CON 132.7	BELLINGHAM TOWER ★ 124.9 (CTAF) 0 379.3	GND CON 127.4 379.3	UNICOM 122.95
-----------------------	---	---	-------------------------------	-------------------------



NW-1, 30 OCT 2025 to 27 NOV 2025

NW-1, 30 OCT 2025 to 27 NOV 2025

ELEV 171	D	TDZE 171
----------	----------	----------



CATEGORY	A	B	C	D
LPV DA		421-¾	250 (300-¾)	
LNAV/VNAV DA		503-1½	332 (400-1½)	
LNAV MDA	640-1	469 (500-1)	640-1¾	469 (500-1½)
CIRCLING	640-1	469 (500-1)	900-2 729 (800-2)	1160-3 989 (1000-3)

BELLINGHAM, WASHINGTON
Amf 2A 06OCT22

48°48'N-122°32'W

BELLINGHAM INTL (BLI) RNAV (GPS) Y RWY 34

BELLINGHAM, WASHINGTON

AL-45 (FAA)

25331

WAAS CH 86223 W34A	APP CRS 344°	Rwy Ldg TDZE 171 Apt Elev 171
--	------------------------	---

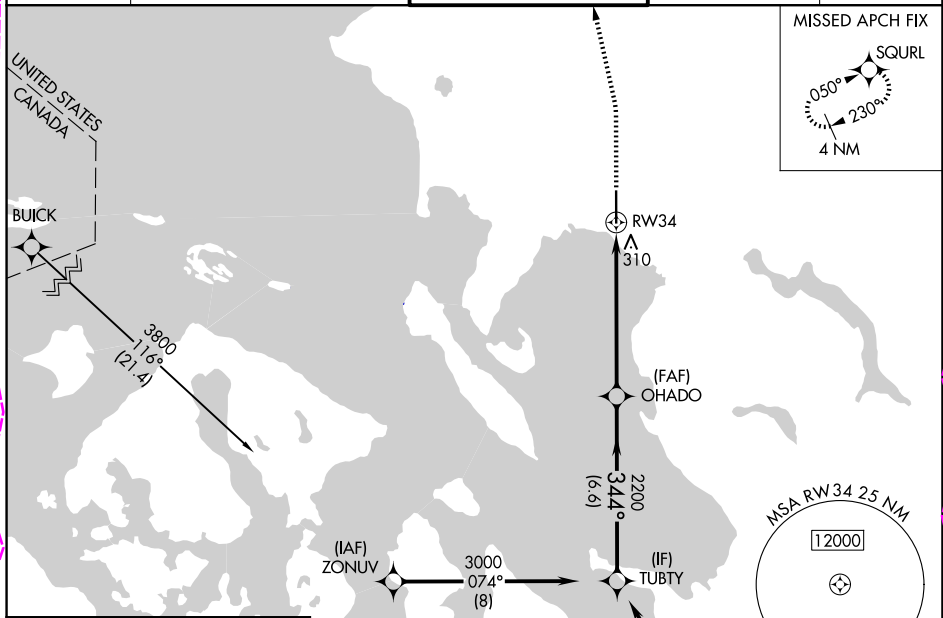
RNAV (GPS) Y RWY 34

BELLINGHAM INTL (BLI)

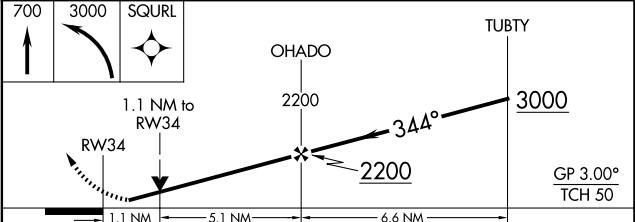
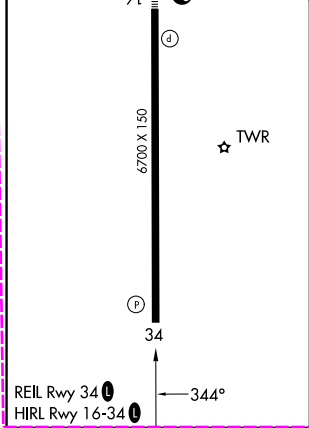
RNP APCH - GPS.
 ⚠ Rwy 34 helicopter visibility reduction below $\frac{3}{4}$ SM NA. For uncompensated Baro-VNAV systems, LNAV/VNAV NA below -10°C or above 54°C.

MISSED APPROACH: Climb to 700 then climbing left turn to 3000 direct SQURL and hold, continue to climb in hold to 3000.

ATIS 134.45	VICTORIA TERMINAL APP CON 132.7	BELLINGHAM TOWER ★ 124.9 (CTAF) 0 379.3	GND CON 127.4 379.3	UNICOM 122.95
-----------------------	---	--	-------------------------------	-------------------------



ELEV 171	D	TDZE 171
----------	----------	----------



CATEGORY	A	B	C	D
LPV DA		421- $\frac{3}{4}$	250 (300- $\frac{3}{4}$)	
LNAV/VNAV DA		471- $\frac{7}{8}$	300 (300- $\frac{7}{8}$)	
LNAV MDA	580-1	409 (500-1)	580-1 $\frac{1}{8}$	409 (500-1 $\frac{1}{8}$)
CIRCLING	640-1	469 (500-1)	860-2 689 (700-2)	1140-3 969 (1000-3)

BELLINGHAM, WASHINGTON
 Amf 3 27NOV25

48°48'N-122°32'W

RNAV (GPS) Y RWY 34

NW-1, 27 NOV 2025 to 25 DEC 2025

NW-1, 27 NOV 2025 to 25 DEC 2025