

BELLINGHAM, WASHINGTON

AL-45 (FAA)

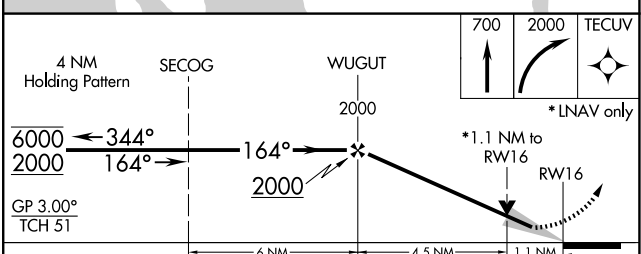
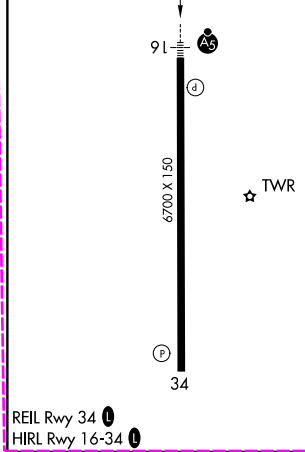
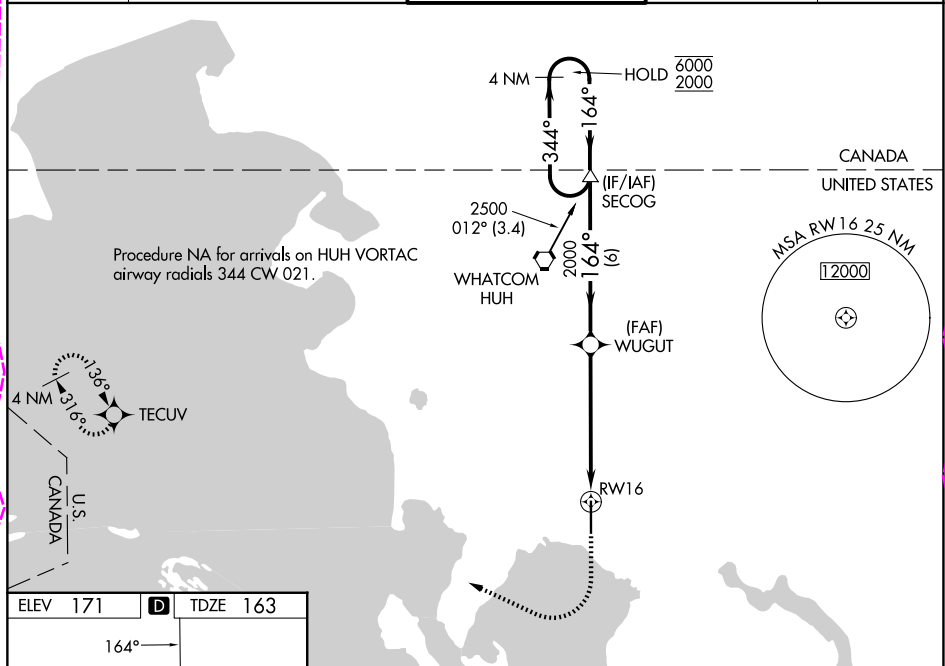
25219

WAAS CH 45999 W16A	APP CRS 164°	Rwy Ldg TDZE 163 Apt Elev 171
--	------------------------	---

RNAV (GPS) Y RWY 16

BELLINGHAM INTL (BLI)

RNP APCH. ⚠ For uncompensated Baro-VNAV systems, LNAV/VNAV NA below -10°C or above 54°C. #RVR 1800 authorized with use of FD or AP or HUD to DA.		MALS R AS	MISSED APPROACH: Climb to 700 then climbing right turn to 2000 direct TECUV and hold.		
ATIS 134.45	VICTORIA TERMINAL APP CON 132.7	BELLINGHAM TOWER ★ 124.9 (CTAF) 0 379.3	GND CON 127.4 379.3	UNICOM 122.95	



CATEGORY	A	B	C	D
LPV DA #	363/24		200 (200-½)	
LNAV/VNAV DA	491/30		328 (400-¾)	
LNAV MDA	560/24 397 (400-½)		560/35 397 (400-¾)	
CIRCLING	640-1 469 (500-1)		900-2 729 (800-2) 1160-3 989 (1000-3)	

BELLINGHAM, WASHINGTON
Amdt 3C 15AUG19

48°48'N-122°32'W

RNAV (GPS) Y RWY 16

NW-1, 30 OCT 2025 to 27 NOV 2025

NW-1, 30 OCT 2025 to 27 NOV 2025

BELLINGHAM, WASHINGTON

AL-45 (FAA)

25331

WAAS CH 45999	APP CRS 164°	Rwy Ldg TDZE 163	6700
W16A		Apt Elev 171	

RNAV (GPS) Y RWY 16

BELLINGHAM INTL (BLI)

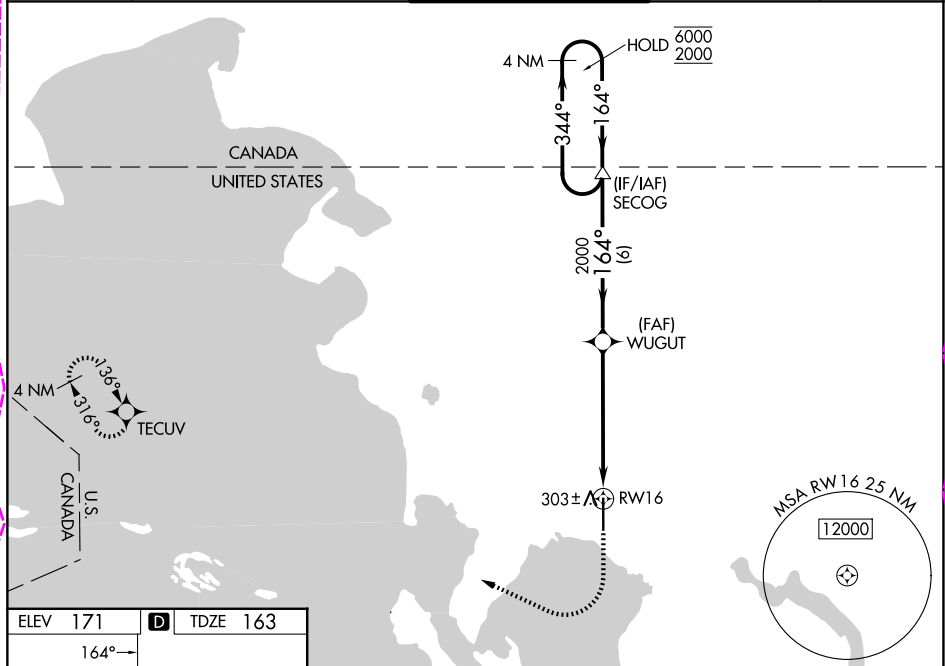
RNP APCH - GPS.

For uncompensated Baro-VNAV systems, LNAV/VNAV NA below -10°C or above 54°C.
*RVR 1800 authorized with use of FD or AP or HUD to DA.



MISSED APPROACH: Climb to 700 then climbing right turn to 2000 direct TECUV and hold.

ATIS 134.45	VICTORIA TERMINAL APP CON 132.7	BELLINGHAM TOWER★ 124.9 (CTAF) 0 379.3	GND CON 127.4 379.3	UNICOM 122.95
-----------------------	---	--	-------------------------------	-------------------------



NW-1, 127 NOV 2025 to 25 DEC 2025

NW-1, 127 NOV 2025 to 25 DEC 2025

ELEV 171	D	TDZE 163
----------	----------	----------

REIL Rwy 34 0
HIRL Rwy 16-34 0

	4 NM Holding Pattern	SECOG	WUGUT	TECUV
	6000 ← 344°	164° →	2000	1.1 NM to RWY 16
	2000	2000		RWY 16
	GP 3.00°			
	TCH 51			
		6 NM	4.5 NM	1.1 NM
CATEGORY	A	B	C	D
LPV DA*	363/24 200 (200-½)			
LNAV/VNAV DA	486/26 323 (400-½)			
LNAV MDA	560/24	397 (400-½)	560/35	397 (400-¾)
CIRCLING	640-1	469 (500-1)	860-2 689 (700-2)	1140-3 969 (1000-3)

BELLINGHAM, WASHINGTON
Amdt 4 27NOV25

48°48'N-122°32'W

BELLINGHAM INTL (BLI)
RNAV (GPS) Y RWY 16