

BELLINGHAM, WASHINGTON

AL-45 (FAA)

25219

APP CRS	Rwy Ldg	6700
344°	TDZE	171
	Apt Elev	171

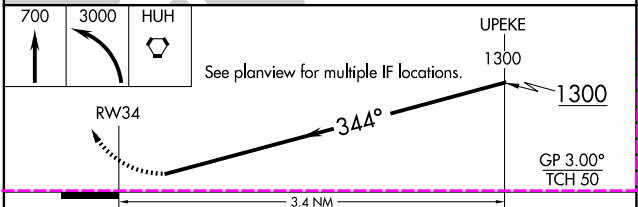
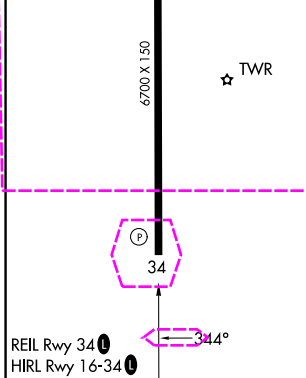
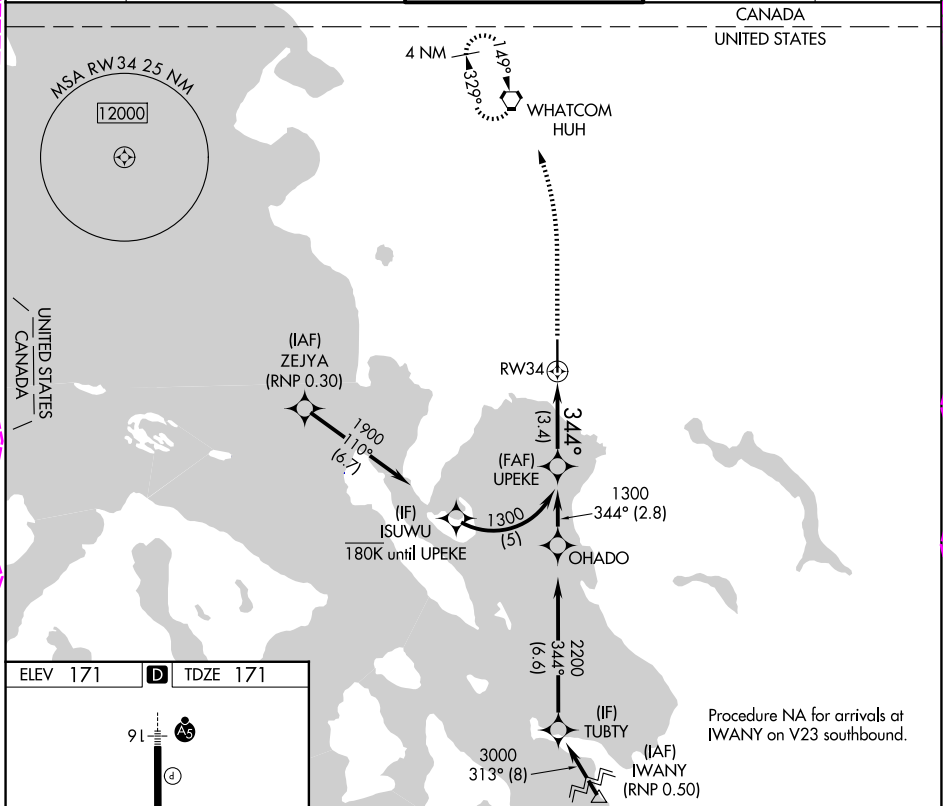
RNAV (RNP) Z RWY 34

BELLINGHAM INTL (BLI)

RNP AR APCH-GPS. MISSED APPROACH: Climb to 700 then climbing left turn to 3000 direct WHATCOM VORTAC and hold, continue climb-in-hold to 3000.

For uncompensated Baro-VNAV systems, procedure NA below -7°C or above 54°C.

ATIS	VICTORIA TERMINAL APP CON	BELLINGHAM TOWER ★	GND CON	UNICOM
134.45	132.7	124.9 (CTAF) 0 379.3	127.4 379.3	122.95



CATEGORY	A	B	C	D
RNP 0.11 DA		463-7/8	292 (300-7/8)	
RNP 0.30 DA		578-1 3/8	407 (500-1 3/8)	

AUTHORIZATION REQUIRED

BELLINGHAM, WASHINGTON
 Amdt 1B 19MAY22

48°48'N-122°32'W

BELLINGHAM INTL (BLI)
RNAV (RNP) Z RWY 34

NW-1, 30 OCT 2025 to 27 NOV 2025

NW-1, 30 OCT 2025 to 27 NOV 2025

BELLINGHAM, WASHINGTON

AL-45 (FAA)

25331

APP CRS	Rwy Ldg	6700
344°	TDZE	171
	Apt Elev	171

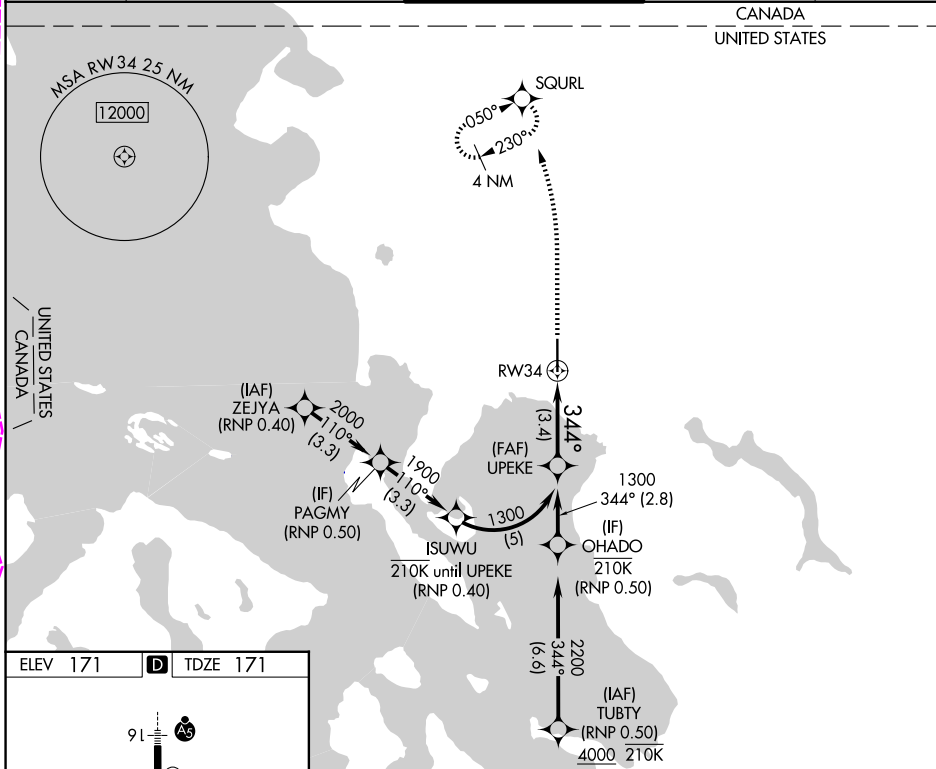
RNAV (RNP) Z RWY 34

BELLINGHAM INTL (BLI)

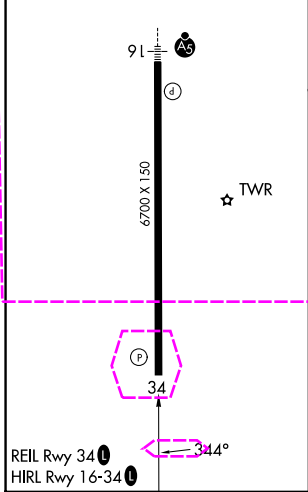
RNP AR APCH - GPS. From PAGMY, OHADO: Min RNP 0.50.
 Authorization required. From ISUWU: RF, Min RNP 0.40.
 For uncompensated Baro-VNAV systems, procedure NA below -10°C or above 54°C.

MISSED APPROACH: Climb to 700 then climbing left turn to 3000 direct SQURL and hold, continue climb in hold to 3000.

ATIS	VICTORIA TERMINAL APP CON	BELLINGHAM TOWER ★	GND CON	UNICOM
134.45	132.7	124.9 (CTAF) 0 379.3	127.4 379.3	122.95



ELEV 171	D	TDZE 171
----------	----------	----------



700	3000	SQURL	See planview for multiple IF locations.	UPEKE
				1300
				1300
				GP 3.00°
				TCH 50

CATEGORY	A	B	C	D
RNP 0.11 DA		444-7/8	273 (300-7%)	
RNP 0.30 DA		577-1/8	406 (500-1/8)	

AUTHORIZATION REQUIRED

BELLINGHAM, WASHINGTON
 Amdt 2 27NOV25

48°48'N-122°32'W

BELLINGHAM INTL (BLI)
RNAV (RNP) Z RWY 34

NW-1, 27 NOV 2025 to 25 DEC 2025

NW-1, 27 NOV 2025 to 25 DEC 2025