

BELLINGHAM, WASHINGTON

AL-45 (FAA)

25219

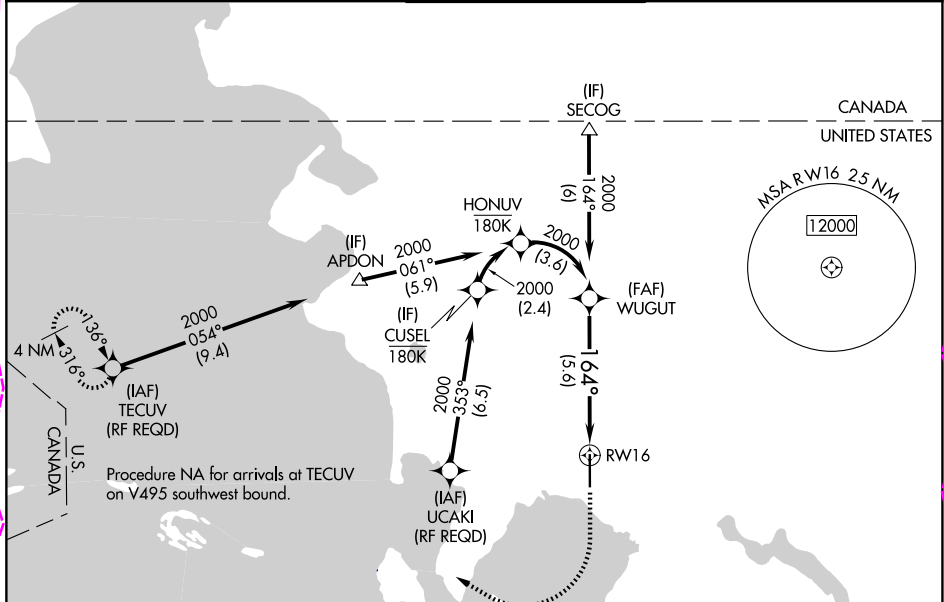
APP CRS	Rwy Ldg	6700
164°	TDZE	163
	Apt Elev	171

RNAV (RNP) Z RWY 16

BELLINGHAM INTL (BLI)

RNP AR APCH	MALSR	MISSED APPROACH: Climb to 700 then climbing right turn to 2000 direct TECUV and hold.
<p>▼ For uncompensated Baro-VNAV systems, procedure NA below -10°C or above 54°C. For inop ALS, increase RNP 0.27 all Cats visibility to RVR 4500, increase RNP 0.30 all Cats visibility to RVR 6000.</p>		

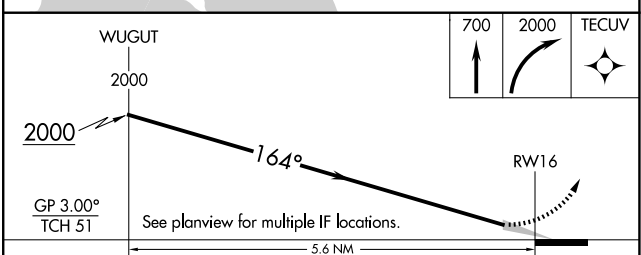
ATIS 134.45	VICTORIA TERMINAL APP CON 132.7	BELLINGHAM TOWER* 124.9 (CTAF) 0 379.3	GND CON 127.4 379.3	UNICOM 122.95
-----------------------	---	--	-------------------------------	-------------------------



NW-1, 30 OCT 2025 to 27 NOV 2025

NW-1, 30 OCT 2025 to 27 NOV 2025

ELEV 171	D	TDZE 163
164°	91	AS
6700 X 150	4	TWR
34		



CATEGORY	A	B	C	D
RNP 0.27 DA	483/24 320 (400-½)			
RNP 0.30 DA	580/45 417 (500-¾)			

REIL Rwy 34
HIRL Rwy 16-34

BELLINGHAM, WASHINGTON
Amdt 1A 15AUG19

48°48'N-122°32'W

BELLINGHAM INTL (BLI)
RNAV (RNP) Z RWY 16

AUTHORIZATION REQUIRED

BELLINGHAM, WASHINGTON

AL-45 (FAA)

25331

APP CRS	Rwy Ldg	6700
164°	TDZE	163
	Apt Elev	171

RNAV (RNP) Z RWY 16

BELLINGHAM INTL (BLI)

RNP AR APCH - GPS. Authorization required. From CUSUL, HONUW: RF.

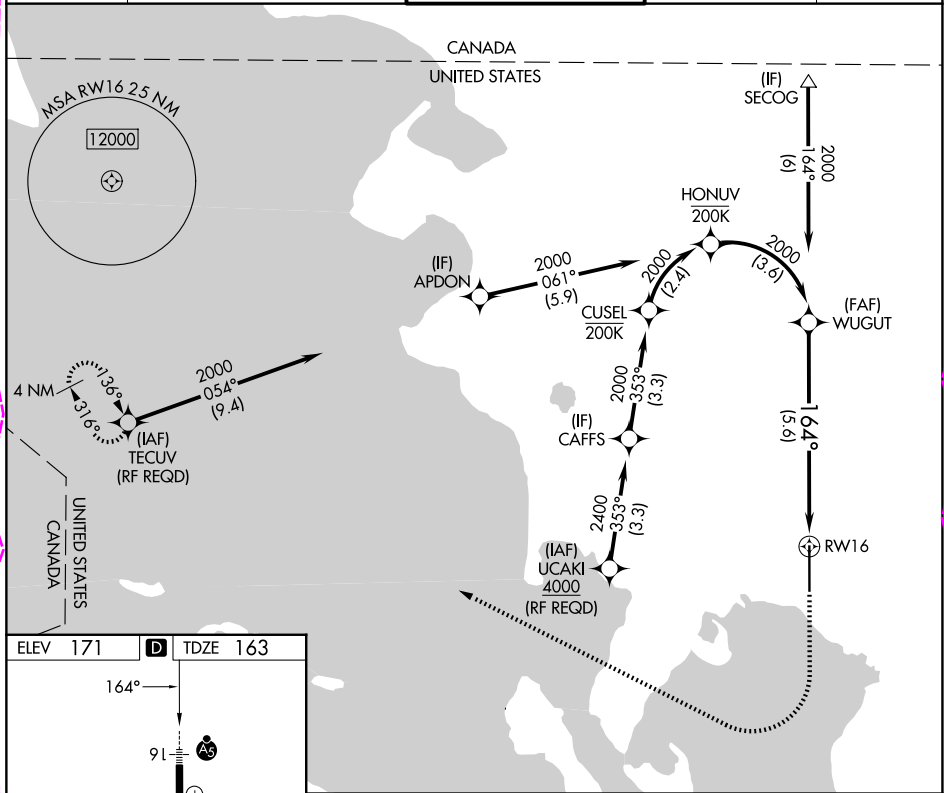
For uncompensated Baro-VNAV systems, procedure NA below -10°C or above 54°C.

MAISR



MISSED APPROACH: Climb to 700 then climbing right turn to 2000 direct TECUV and hold.

ATIS 134.45	VICTORIA TERMINAL APP CON 132.7	BELLINGHAM TOWER★ 124.9 (CTAF) 0 379.3	GND CON 127.4 379.3	UNICOM 122.95
-----------------------	---	--	-------------------------------	-------------------------

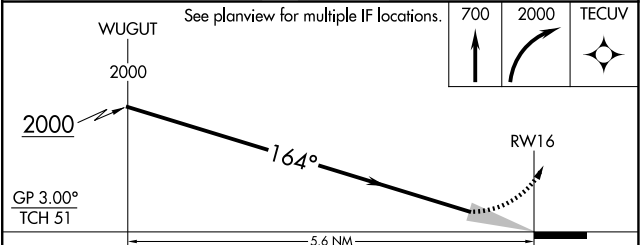


NW-1, 27 NOV 2025 to 25 DEC 2025

NW-1, 27 NOV 2025 to 25 DEC 2025

ELEV 171	D	TDZE 163
----------	----------	----------

REIL Rwy 34 0
HIRL Rwy 16-34 0



CATEGORY	A	B	C	D
RNP 0.30 DA		496/26	333 (400-1/2)	

AUTHORIZATION REQUIRED

BELLINGHAM, WASHINGTON
Amdt 2 27NOV25

48°48'N-122°32'W

BELLINGHAM INTL (BLI)
RNAV (RNP) Z RWY 16