

BELLINGHAM, WASHINGTON

AL-45 (FAA)

25219


LOC/DME I-BLI 108.5 Chan 22	APP CRS 164°	Rwy Ldg TDZE Apt Elev	6700 163 171
--	------------------------	-----------------------------	---

ILS or LOC RWY 16

BELLINGHAM INTL (BLI)

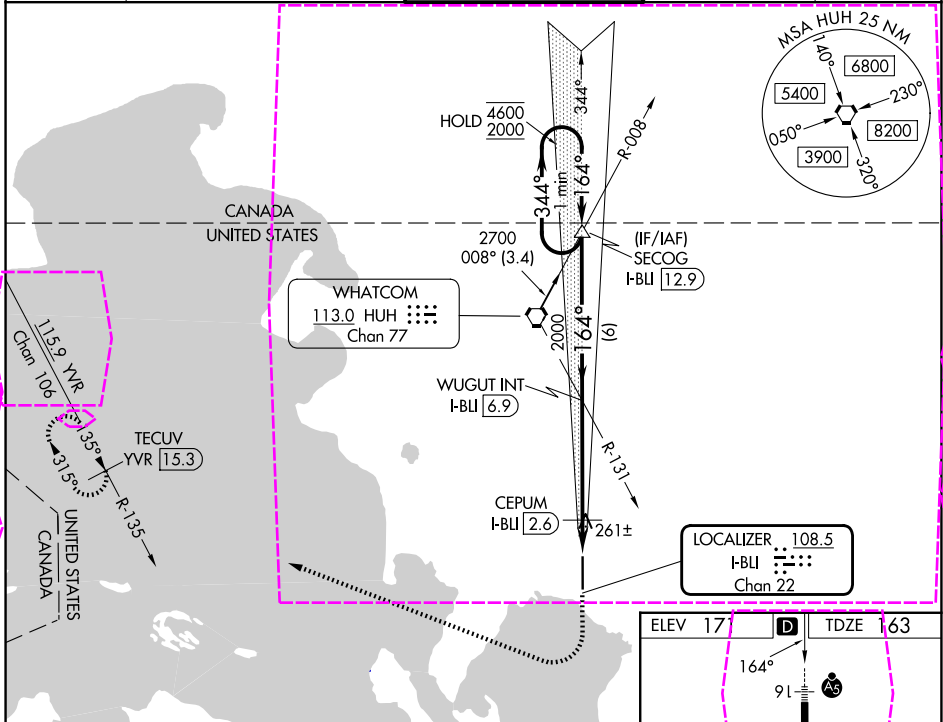
DME or RADAR required.

⚠ Autopilot coupled approach NA below 500. For inop ALS, increase S-LOC Cat C/D visibility to RVR 6000.
***** RVR 1800 authorized with use of FD or AP or HUD to DA (NA when using FHR altimeter setting).

MALSR 

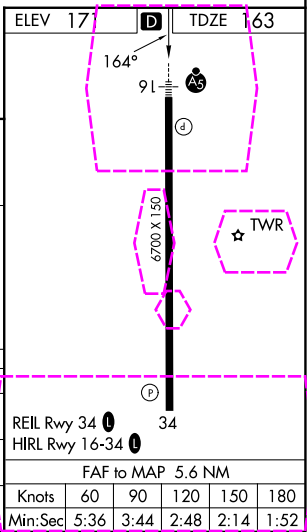
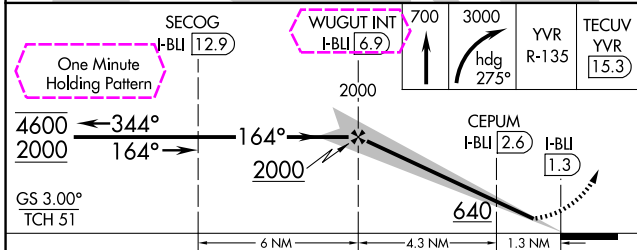
MISSED APPROACH: Climb to 700 then climbing right turn to 3000 on heading 275° and on YVR VOR/DME R-135 to TECUV/YVR 15.3 DME and hold.

ATIS 134.45	VICTORIA TERMINAL APP CON 132.7	BELLINGHAM TOWER * 124.9 (CTAF) 379.3	GND CON 127.4 379.3	UNICOM 122.95
-----------------------	---	--	-------------------------------	-------------------------



NW-1, 30 OCT 2025 to 27 NOV 2025

NW-1, 30 OCT 2025 to 27 NOV 2025



CATEGORY	A	B	C	D
S-ILS 16*	363/24 200 (200-½)			
S-LOC 16	520/24	357 (400-½)	520/40	357 (400-¾)
CIRCLING	640-1	469 (500-1)	900-2	1160-3
			729 (800-2)	989 (1000-3)

BELLINGHAM, WASHINGTON
 Amdt 9 17APR25

48°48'N-122°32'W

BELLINGHAM INTL (BLI)

ILS or LOC RWY 16

BELLINGHAM, WASHINGTON

AL-45 (FAA)

25331

LOC/DME I-BLI 108.5 Chan 22	APP CRS 164°	Rwy Ldg TDZE Apt Elev	6700 163 171
--	------------------------	-----------------------------	---

ILS or LOC RWY 16

BELLINGHAM INTL (BLI)

DME required.

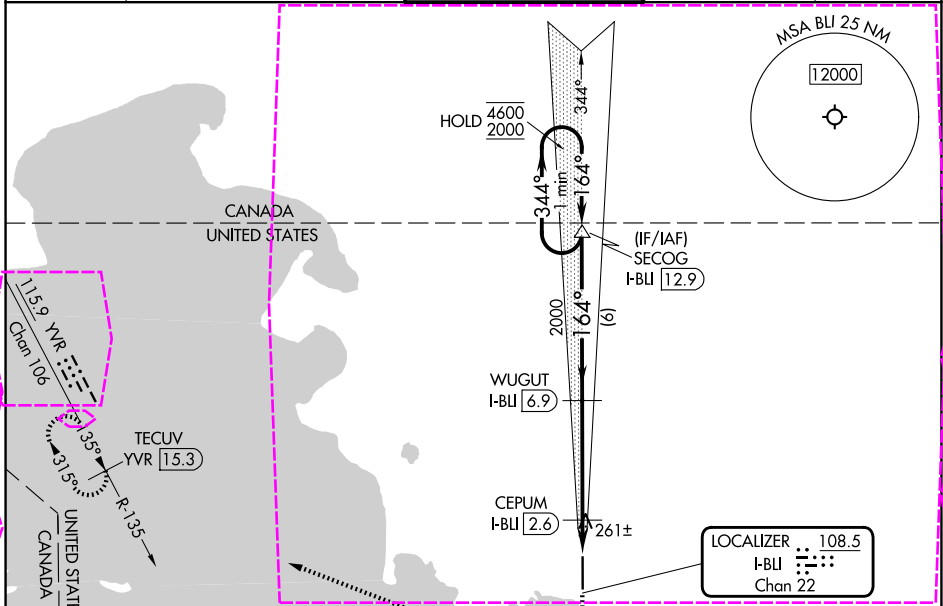
⚠ Autopilot coupled approach NA below 500. For inop ALS, increase S-LOC Cat C/D visibility to RVR 6000.
*RVR 1800 authorized with use of FD or AP or HUD to DA.

MALSR



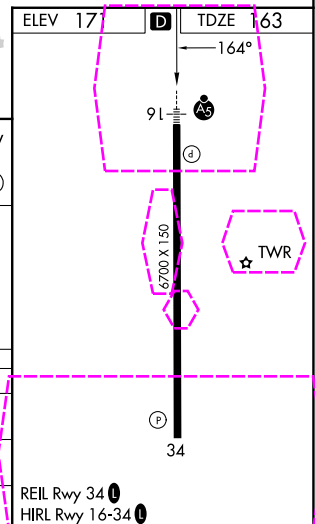
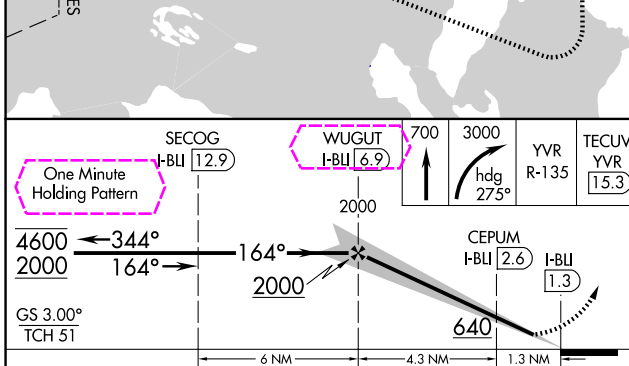
MISSED APPROACH: Climb to 700 then climbing right turn to 3000 on heading 275° and on YVR VOR/DME R-135 to TECUV/YVR 15.3 DME and hold.

ATIS 134.45	VICTORIA TERMINAL APP CON 132.7	BELLINGHAM TOWER * 124.9 (CTAF) 379.3	GND CON 127.4 379.3	UNICOM 122.95
-----------------------	---	--	-------------------------------	-------------------------



NW-1, 127 NOV 2025 to 25 DEC 2025

NW-1, 127 NOV 2025 to 25 DEC 2025



CATEGORY	A	B	C	D
S-ILS 16*	363/24 200 (200-½)			
S-LOC 16	520/24	357 (400-½)	520/30	357 (400-¾)
CIRCLING	640-1	469 (500-1)	860-2 689 (700-2)	1140-3 969 (1000-3)

BELLINGHAM, WASHINGTON
Amf 10 27NOV25

48°48'N-122°32'W

ILS or LOC RWY 16

BELLINGHAM INTL (BLI)

REIL Rwy 34
HIRL Rwy 16-34