

AUGUSTA, MAINE

AL-29 (FAA)

25219

VOR/DME AUG 114.95 Chan 96(Y)	APP CRS 354°	Rwy Ldg 5002 TDZE 350 Apt Elev 352
---	------------------------	---

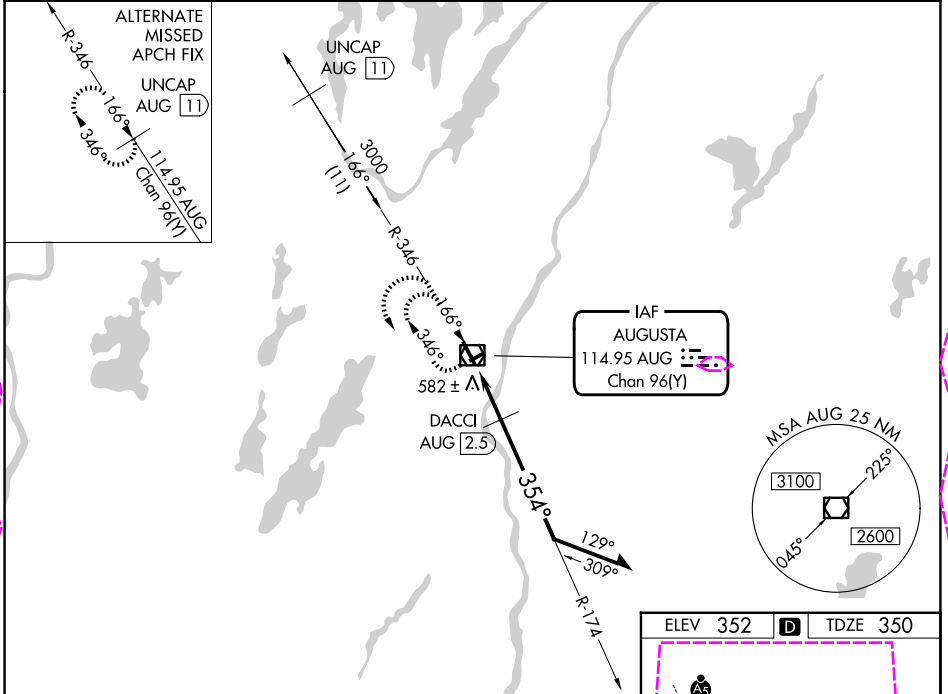
VOR RWY 35

AUGUSTA STATE (AUG)

▼ Rwy 35 helicopter visibility reduction below 3/4 SM NA. When local altimeter setting not received, use Waterville altimeter setting: increase all MDA 40 feet and visibility S-35 Cats C and D 1/2 SM, and Circling Cat D 1/4 SM; DACCI fix minimums increase visibility S-35 Cats C and D 1/2 SM, and Circling Cat D 1/4 SM. Circling Rwy 8, 26 NA at night.

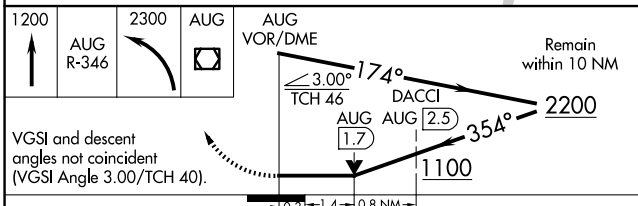
MISSED APPROACH: Climb to 1200 on AUG VOR/DME R-346, then climbing left turn to 2300 direct AUG VOR/DME and hold.

ASOS 118.325	PORTLAND APP CON * 128.35 299.2	CLNC DEL 119.95 299.2	UNICOM 123.0 (CTAF) 0
------------------------	---	---------------------------------	---------------------------------

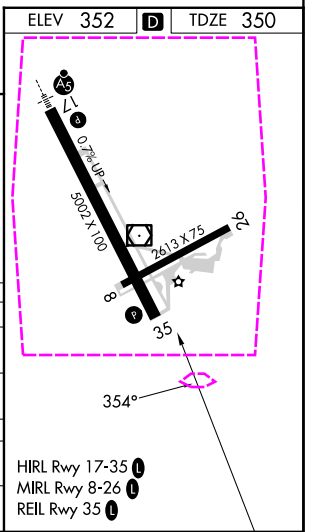


NE-1, 30 OCT 2025 to 27 NOV 2025

NE-1, 30 OCT 2025 to 27 NOV 2025



CATEGORY	A	B	C	D
S-35	1100-1 750 (800-1)	1100-1 1/4 750 (800-1 1/4)	1100-2	750 (800-2)
CIRCLING	1100-1 748 (800-1)	1100-1 1/4 748 (800-1 1/4)	1100-2 1/4 748 (800-2 1/4)	1160-2 1/2 808 (900-2 1/2)
DACCI FIX MINIMUMS				
S-35	840-1	490 (500-1)	840-1 3/8	490 (500-1 3/8)
CIRCLING	960-1 608 (700-1)	980-1 628 (700-1)	980-1 1/4 628 (700-1 1/4)	1160-2 1/2 808 (900-2 1/2)



AUGUSTA, MAINE
Amdt 6D 21MAR24

44°19'N-69°48'W

AUGUSTA STATE (AUG) VOR RWY 35

