

AUGUSTA, MAINE

AL-29 (FAA)

25219

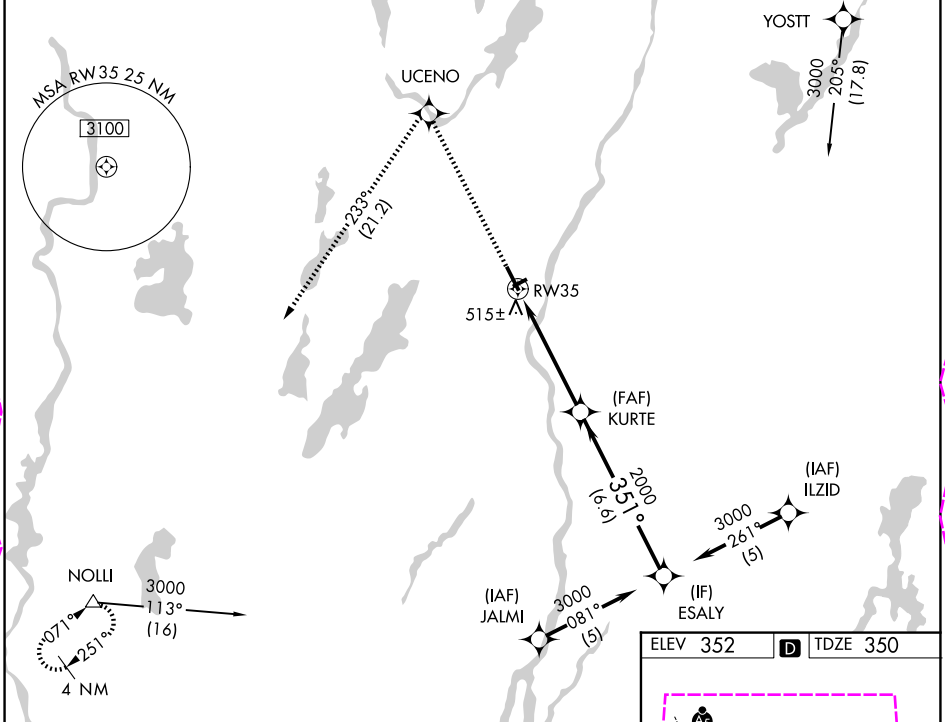
WAAS CH 70406 W35A	APP CRS 351°	Rwy Ldg TDZE Apt Elev	5002 350 352
--	------------------------	-----------------------------	---

RNAV (GPS) RWY 35

AUGUSTA STATE (AUG)

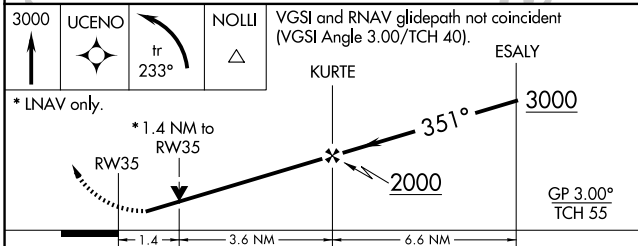
RNP APCH. <p>⚠ Circling to Rwy 26 NA at night. Rwy 35 helicopter visibility reduction below 3/4 SM NA. ⚠ For uncompensated Baro-VNAV systems, LNAV/VNAV NA below -15°C or above 54°C.</p>	MISSED APPROACH: Climb to 3000 direct UCENO and left turn on track 233° to NOLLI and hold.
---	--

ASOS 118.325	PORTLAND APP CON * 128.35 299.2	CLNC DEL 119.95 299.2	UNICOM 123.0 (CTAF) 0
------------------------	---	---------------------------------	---------------------------------

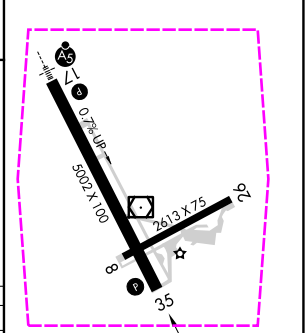


NE-1, 30 OCT 2025 to 27 NOV 2025

NE-1, 30 OCT 2025 to 27 NOV 2025



ELEV 352	D	TDZE 350
----------	---	----------



CATEGORY	A	B	C	D
LPV DA		610-1	260 (300-1)	
LNAV/VNAV DA		850-1 3/4	500 (500-1 3/4)	
LNAV MDA	840-1	490 (500-1)	840-1 3/4 490 (500-1 3/4)	840-1 1/2 490 (500-1 1/2)
CIRCLING	880-1 3/4 528 (600-1 3/4)	980-1 3/4 628 (700-1 3/4)		1160-2 1/2 808 (900-2 1/2)

MIRL Rwy 8-26 0
HIRL Rwy 17-35 0
REIL Rwy 35 0

AUGUSTA, MAINE
Orig-D 11AUG22

44°19'N-69°48'W

RNAV (GPS) RWY 35

AUGUSTA, MAINE

AL-29 (FAA)

25331

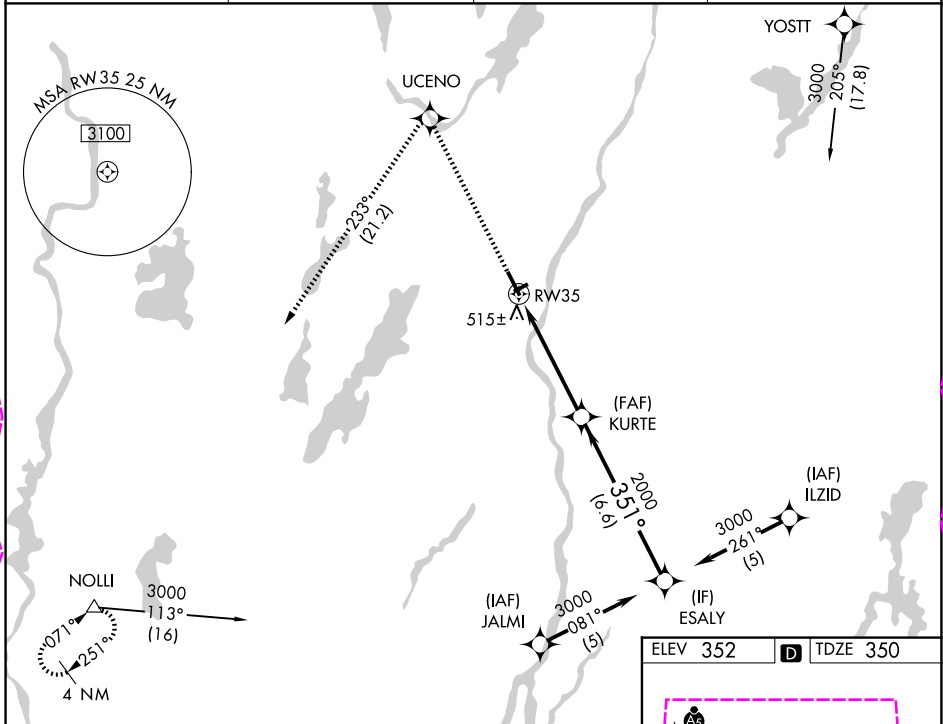
WAAS CH 70406 W35A	APP CRS 351°	Rwy Ldg TDZE Apt Elev	5002 350 352
--	------------------------	-----------------------------	---

RNAV (GPS) RWY 35

AUGUSTA STATE (AUG)

RNP APCH. Circling to Rwy 26 NA at night. Rwy 35 helicopter visibility reduction below 3/4 SM NA. For uncompensated Baro-VNAV systems, LNAV/VNAV NA below -15°C or above 54°C.	MISSED APPROACH: Climb to 3000 direct UCENO and left turn on track 233° to NOLLI and hold.
---	--

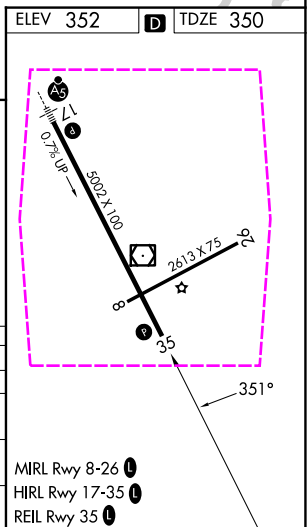
ASOS 118.325	PORTLAND APP CON ★ 128.35 299.2	CLNC DEL 119.95 299.2	UNICOM 123.0 (CTAF)
------------------------	---	---------------------------------	-------------------------------



NE-1, 27 NOV 2025 to 25 DEC 2025

NE-1, 27 NOV 2025 to 25 DEC 2025

3000	UCENO	Ir 233°	NOLLI	VGSi and RNAV glidepath not coincident (VGSi Angle 3.00/TCH 40).	
* LNAV only.					
* 1.4 NM to RW35 RW35 to KURTE: 3.6 NM KURTE to ESALY: 6.6 NM GP 3.00° TCH 55					
CATEGORY	A	B	C	D	
LPV DA	610-1				260 (300-1)
LNAV/VNAV DA	850-1 3/4				500 (500-1 3/4)
LNAV MDA	840-1	490 (500-1)	840-1 3/4	490 (500-1 3/4)	840-1 1/2
CIRCLING	880-1 3/4	980-1 3/4	628 (700-1 3/4)	1160-2 1/2	808 (900-2 1/2)



AUGUSTA, MAINE
Orig-D 11AUG22

44°19'N-69°48'W

RNAV (GPS) RWY 35

- MIRL Rwy 8-26
- HIRL Rwy 17-35
- REIL Rwy 35