

WAAS CH 70720 W17A	APP CRS 171°	Rwy Ldg 5002 TDZE 348 Apt Elev 352
--	------------------------	---

RNAV (GPS) RWY 17

AUGUSTA STATE (AUG)

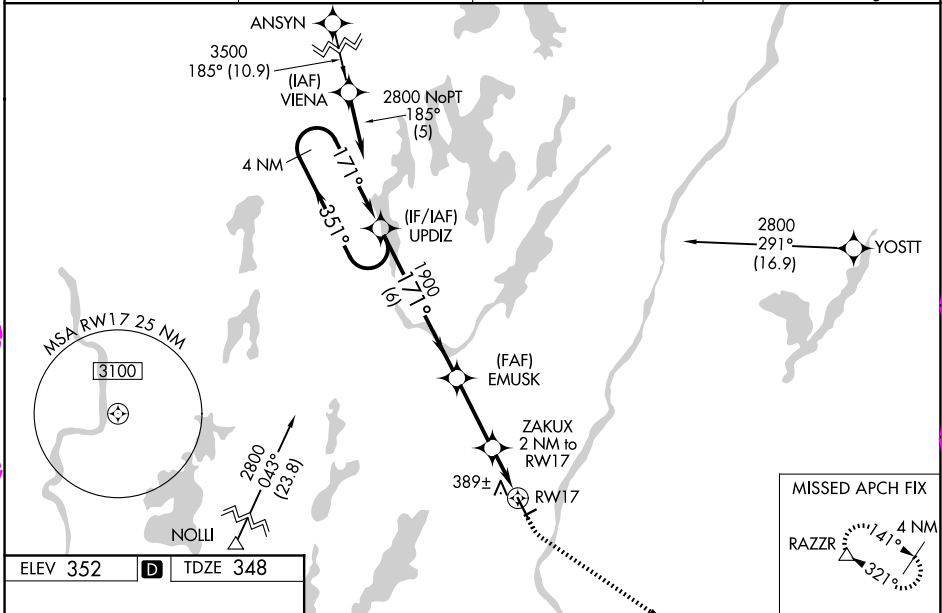
RNP APCH - GPS

⚠ For inop MALSR, increase LNAV/VNAV all Cats visibility to 1 mile. For inop MALSR when using Waterville altimeter setting, increase LNAV/VNAV all Cats visibility to 1½ mile. VDP and Baro-VNAV NA with Waterville altimeter setting. When local altimeter setting not received, use Waterville altimeter setting: increase LPV DA to 583 feet, LNAV/VNAV DA to 710 feet, and visibility LNAV/VNAV all Cats ½ SM; increase all MDA 40 feet and visibility LNAV Cats C and D ½ SM, and Circling Cat D ¼ SM. For uncompensated Baro-VNAV systems, LNAV/VNAV NA below -30°C or above 41°C. Circling Rwy 8, 26 NA at night.



MISSED APPROACH:
Climb to 800 then climbing left turn to 3000 direct RAZZR and hold.

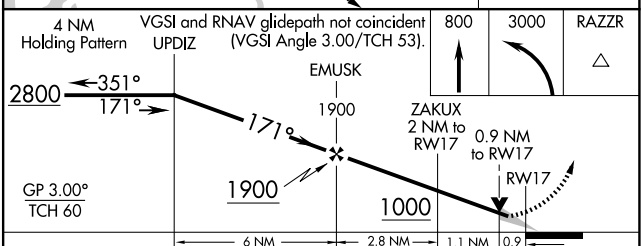
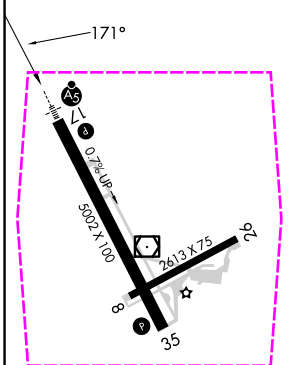
ASOS 118.325	PORTLAND APP CON ★ 128.35 299.2	CLNC DEL 119.95 299.2	UNICOM 123.0 (CTAF) 0
------------------------	---	---------------------------------	---------------------------------



NE-1, 30 OCT 2025 to 27 NOV 2025

NE-1, 30 OCT 2025 to 27 NOV 2025

ELEV 352	D	TDZE 348
----------	----------	----------



CATEGORY	A	B	C	D
LPV DA		548-½	200 (200-½)	
LNAV/VNAV DA		675-⅝	327 (400-⅝)	
LNAV MDA		640-½	292 (300-½)	
CIRCLING	960-1 608 (700-1)	980-1 628 (700-1)	980-1¾ 628 (700-1¾)	1160-2½ 808 (900-2½)

- MIRL Rwy 8-26
- HIRL Rwy 17-35
- REIL Rwy 35

AUGUSTA, MAINE

AL-29 (FAA)

25331

WAAS CH 70720 W17A	APP CRS 171°	Rwy Ldg 5002 TDZE 348 Apt Elev 352
--	------------------------	---

RNAV (GPS) RWY 17

AUGUSTA STATE (AUG)

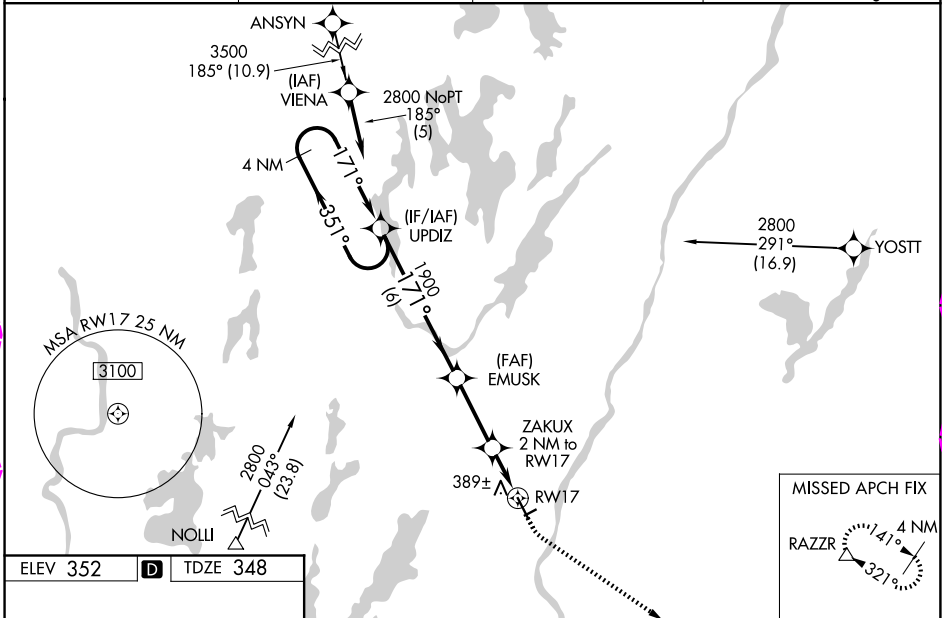
RNP APCH - GPS

For inop MALS, increase LNAV/VNAV all Cats visibility to 1 mile. For inop MALS when using Waterville altimeter setting, increase LNAV/VNAV all Cats visibility to 1 1/8 mile. VDP and Baro-VNAV NA with Waterville altimeter setting. When local altimeter setting not received, use Waterville altimeter setting: increase LPV DA to 583 feet, LNAV/VNAV DA to 710 feet, and visibility LNAV/VNAV all Cats 1/8 SM; increase all MDA 40 feet and visibility LNAV Cats C and D 1/8 SM, and Circling Cat D 1/4 SM. For uncompensated Baro-VNAV systems, LNAV/VNAV NA below -30°C or above 41°C. Circling Rwy 8, 26 NA at night.



MISSED APPROACH:
Climb to 800 then climbing left turn to 3000 direct RAZZR and hold.

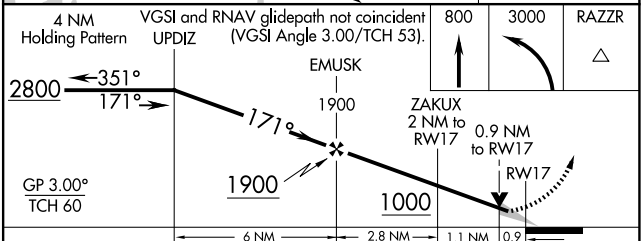
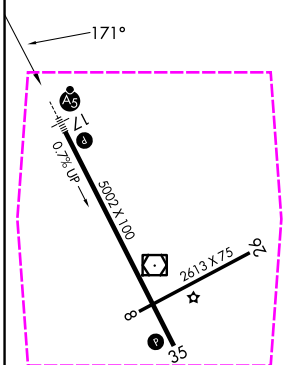
ASOS 118.325	PORTLAND APP CON * 128.35 299.2	CLNC DEL 119.95 299.2	UNICOM 123.0 (CTAF)
------------------------	---	---------------------------------	-------------------------------



NE-1, 27 NOV 2025 to 25 DEC 2025

NE-1, 27 NOV 2025 to 25 DEC 2025

ELEV 352	D	TDZE 348
----------	----------	----------



CATEGORY	A	B	C	D
LPV DA		548-1/2	200 (200-1/2)	
LNAV/VNAV DA		675-5/8	327 (400-5/8)	
LNAV MDA		640-1/2	292 (300-1/2)	
CIRCLING	960-1 608 (700-1)	980-1 628 (700-1)	980-1 3/4 628 (700-1 3/4)	1160-2 1/2 808 (900-2 1/2)

- MIRL Rwy 8-26
- HIRL Rwy 17-35
- REIL Rwy 35

AUGUSTA, MAINE
Orig-D 21MAR24

44°19'N-69°48'W

RNAV (GPS) RWY 17

AUGUSTA STATE (AUG)