

AUGUSTA, MAINE

AL-29 (FAA)

25219

LOC I-AUG	APP CRS	Rwy Ldg	5002
<b>108.7</b>	<b>171°</b>	TDZE	348
		Apt Elev	352

# ILS or LOC RWY 17

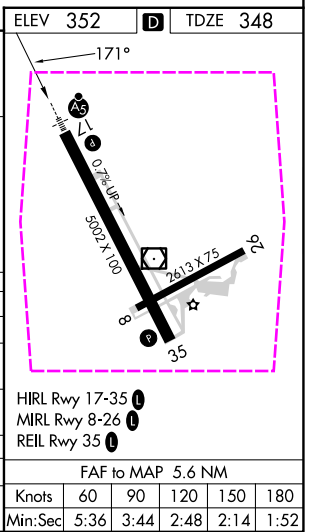
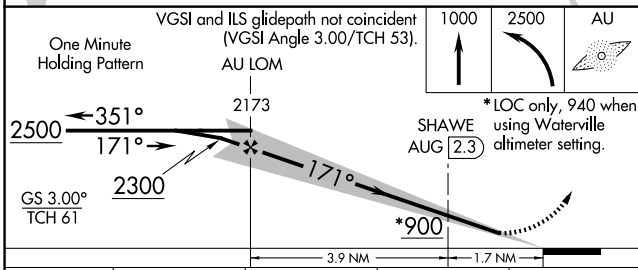
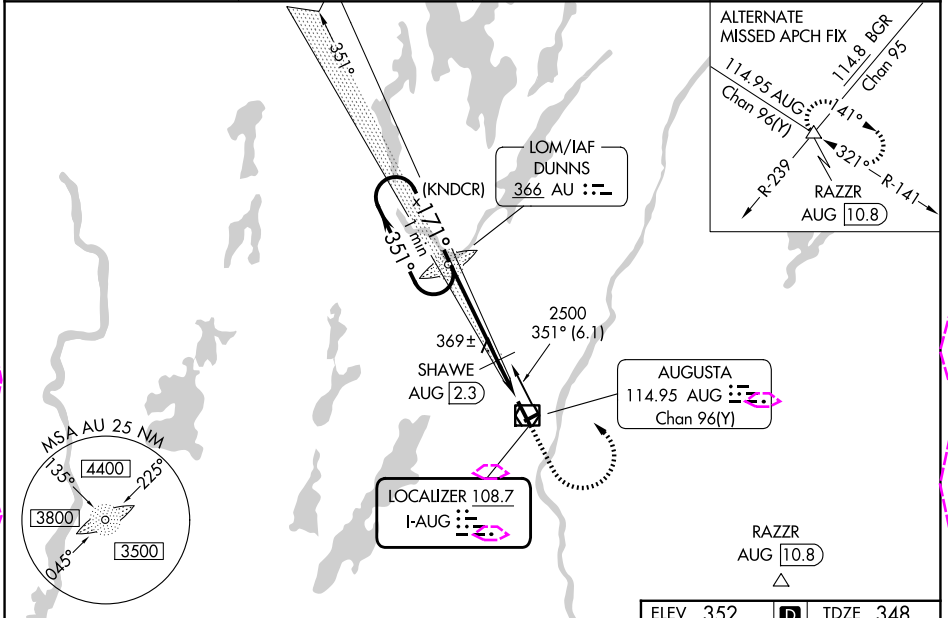
AUGUSTA STATE (AUG)

ADF required.

Localizer unusable from 0.5 NM to threshold above 1500 feet. When local altimeter setting not received, use Waterville altimeter setting; increase S-ILS 17 DA to 583; increase all MDAs 40 feet and visibility S-LOC 17 Cat C and D 1/8 SM, and Circling Cat D 1/4 SM; SHAWE fix minimums increase S-LOC 17 Cat C and D visibility 1/8 SM, and Circling Cat D visibility 1/4 SM. Glideslope unusable below 430 feet. Circling Rwy 8, 26 NA at night. # DME from AUG VOR/DME.

MALSRL MISSED APPROACH: Climb to 1000 then climbing left turn to 2500 direct DUNNS LOM and hold.

ASOS	PORTLAND APP CON *	CLNC DEL	UNICOM
<b>118.325</b>	<b>128.35 299.2</b>	<b>119.95 299.2</b>	<b>123.0 (CTAF)</b>



CATEGORY	A	B	C	D
S-ILS 17		548-1/2	200 (200-1/2)	
S-LOC 17	900-1/2	552 (600-1/2)	900-1 1/4	552 (600-1 1/4)
CIRCLING	940-1 588 (600-1)	980-1 628 (700-1)	980-1 3/4 628 (700-1 3/4)	1160-2 1/2 808 (900-2 1/2)
SHAWE FIX MINIMUMS #				
S-LOC 17		620-1/2	272 (300-1/2)	
CIRCLING	940-1 588 (600-1)	980-1 628 (700-1)	980-1 3/4 628 (700-1 3/4)	1160-2 1/2 808 (900-2 1/2)

AUGUSTA, MAINE  
Amdt 3D 21MAR24

44°19'N-69°48'W

# AUGUSTA STATE (AUG)

## ILS or LOC RWY 17

NE-1, 30 OCT 2025 to 27 NOV 2025

NE-1, 30 OCT 2025 to 27 NOV 2025

AUGUSTA, MAINE

AL-29 (FAA)

25331

LOC I-AUG	APP CRS	Rwy Ldg	5002
<b>108.7</b>	<b>171°</b>	TDZE	348
		Apt Elev	352

# ILS or LOC RWY 17

AUGUSTA STATE (AUG)

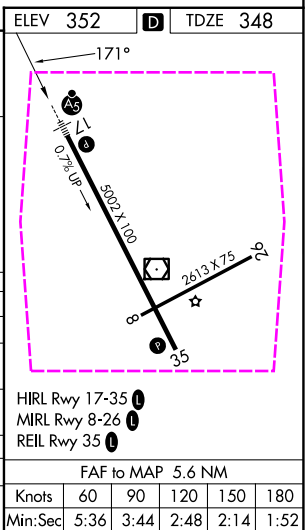
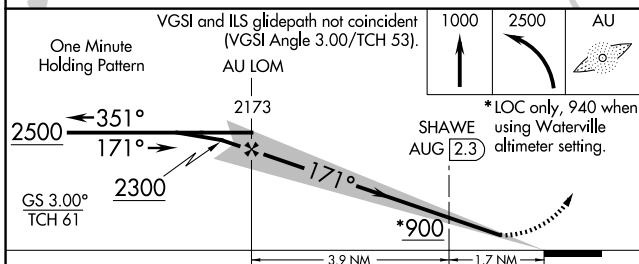
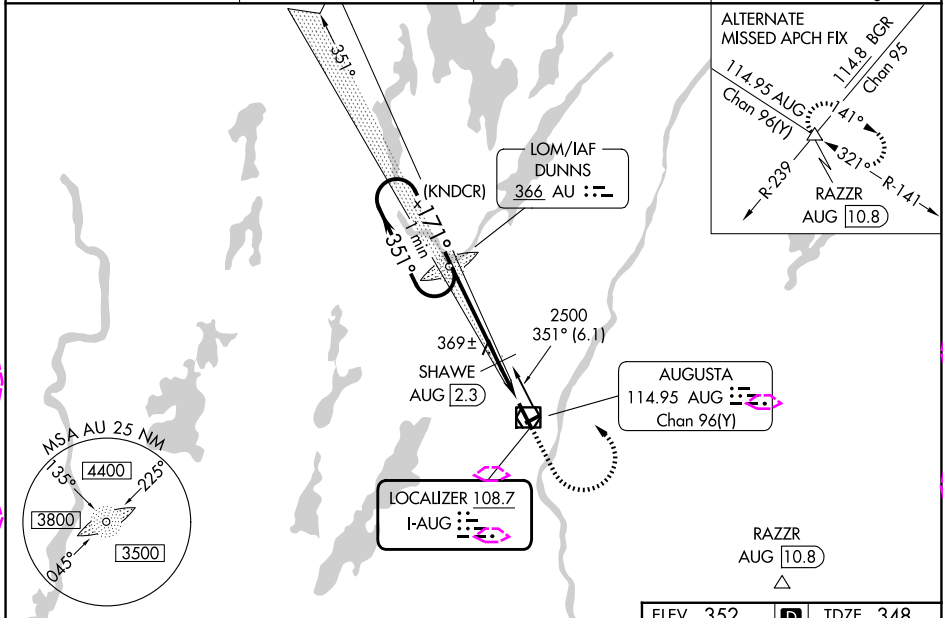
ADF required.

Localizer unusable from 0.5 NM to threshold above 1500 feet. When local altimeter setting not received, use Waterville altimeter setting; increase S-ILS 17 DA to 583; increase all MDAs 40 feet and visibility S-LOC 17 Cat C and D 1/8 SM, and Circling Cat D 1/4 SM; SHAWE fix minimums increase S-LOC 17 Cat C and D visibility 1/8 SM, and Circling Cat D visibility 1/4 SM. Glideslope unusable below 430 feet. Circling Rwy 8, 26 NA at night. # DME from AUG VOR/DME.



MISSED APPROACH:  
Climb to 1000 then climbing left turn to 2500 direct DUNNS LOM and hold.

ASOS	PORTLAND APP CON *	CLNC DEL	UNICOM
<b>118.325</b>	<b>128.35 299.2</b>	<b>119.95 299.2</b>	<b>123.0 (CTAF)</b>



CATEGORY	A	B	C	D
S-ILS 17		548-1/2	200 (200-1/2)	
S-LOC 17	900-1/2	552 (600-1/2)	900-1 1/4	552 (600-1 1/4)
CIRCLING	940-1 588 (600-1)	980-1 628 (700-1)	980-1 3/4 628 (700-1 3/4)	1160-2 1/2 808 (900-2 1/2)
SHAWE FIX MINIMUMS #				
S-LOC 17		620-1/2	272 (300-1/2)	
CIRCLING	940-1 588 (600-1)	980-1 628 (700-1)	980-1 3/4 628 (700-1 3/4)	1160-2 1/2 808 (900-2 1/2)

AUGUSTA, MAINE  
Amdt 3D 21MAR24

44°19'N-69°48'W

# AUGUSTA STATE (AUG)

## ILS or LOC RWY 17

NE-1, 27 NOV 2025 to 25 DEC 2025

NE-1, 27 NOV 2025 to 25 DEC 2025