

(AHMET5.KKIDS) 25331

AL-5703 (FAA)

LORAIN COUNTY RGNL (LPR)  
LORAIN/ELYRIA, OHIO

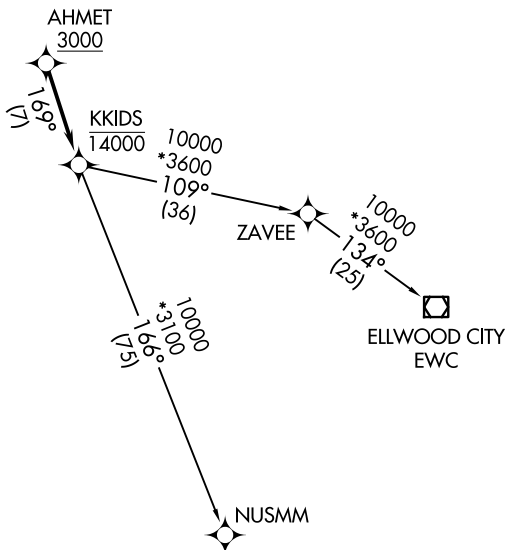
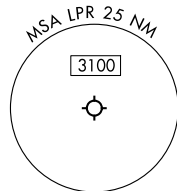
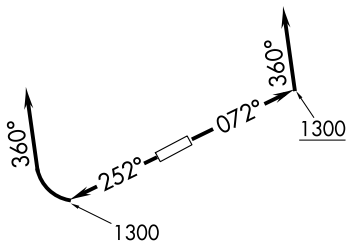
# AHMET FIVE DEPARTURE (RNAV)

ASOS  
118.925  
CLNC DEL  
125.7  
CTAF  
122.7  
CLEVELAND DEP CON  
125.35 346.325

RNAV 1 - DME/DME/IRU or GPS.

RADAR required.

**TOP ALTITUDE:  
ASSIGNED BY ATC**



**TAKEOFF MINIMUMS:**  
Rwys 7, 25: Standard with minimum climb of 500' per NM to 1300.

NOTE: Chart not to scale.

## DEPARTURE ROUTE DESCRIPTION

**TAKEOFF RUNWAY 7:** Climb on heading 072° to 1300, then on heading 360° or as assigned by ATC for RADAR vectors to cross AHMET at or above 3000, thence....

**TAKEOFF RUNWAY 25:** Climb on heading 252° to 1300, then right turn on heading 360° or as assigned by ATC for RADAR vectors to cross AHMET at or above 3000, thence....

....on track 169° to cross KKIDS at or below 14000, then on (transition).  
Maintain ATC assigned altitude, expect filed altitude ten minutes after departure.

ELLWOOD CITY TRANSITION (AHMET5.EWC)

NUSMM TRANSITION (AHMET5.NUSMM)

# AHMET FIVE DEPARTURE (RNAV)

(AHMET5.KKIDS) 27NOV25

LORAIN/ELYRIA, OHIO  
LORAIN COUNTY RGNL (LPR)

EC-2, 27 NOV 2025 to 25 DEC 2025

EC-2, 27 NOV 2025 to 25 DEC 2025