

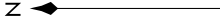
MOUNTAIN TWO DEPARTURE

AL-582 (FAA)

SEATTLE-TACOMA INTL (SEA)
SEATTLE, WASHINGTON

NW-1, 27 NOV 2025 to 25 DEC 2025

**TOP ALTITUDE:
ASSIGNED BY ATC**

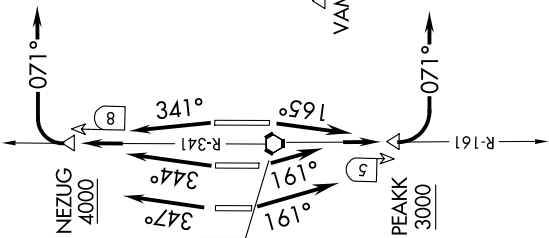


PRINCETON
113.9 YDC
Chan 86

RADAR and DME required.

ALPSE

TAKEOFF MINIMUMS
Rwy 16L: Standard with minimum climb of 560' per NM to 3000.
Rwy 16C: Standard with minimum climb of 515' per NM to 3000.
Rwy 16R: Standard with minimum climb of 500' per NM to 3000.
Rwys 34L/C/R: Standard with minimum climb of 580' per NM to 4000.



PAINE
110.6 PAE
Chan 43

SEATTLE
116.8 SEA
Chan 115

SPOKANE
115.5 GEG
Chan 102

EPHRATA
112.6 EPH
Chan 73

MULLAN PASS
117.8 MIP
Chan 125

MOSES LAKE
115.0 MWH
Chan 97

ELLENSBURG
117.9 ELN
Chan 126

(CONTINUED ON FOLLOWING PAGE)

NOTE: Chart not to scale

NW-1, 27 NOV 2025 to 25 DEC 2025

MOUNTAIN TWO DEPARTURE