

(KRSTA4.KRSTA) 25331

AL-282 (FAA)

KRSTA FOUR DEPARTURE (RNAV)

NASHVILLE INTL (BNA)
NASHVILLE, TENNESSEE

NASHVILLE DEP CON
119.35 372.0
D-ATIS 135.1
CLNC DEL 126.05
CPDLC
GND CON
121.9 348.6
NASHVILLE TOWER
118.6 257.8

RNAV 1 - DME/DME/IRU or GPS.

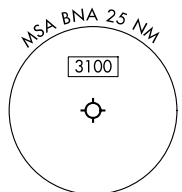
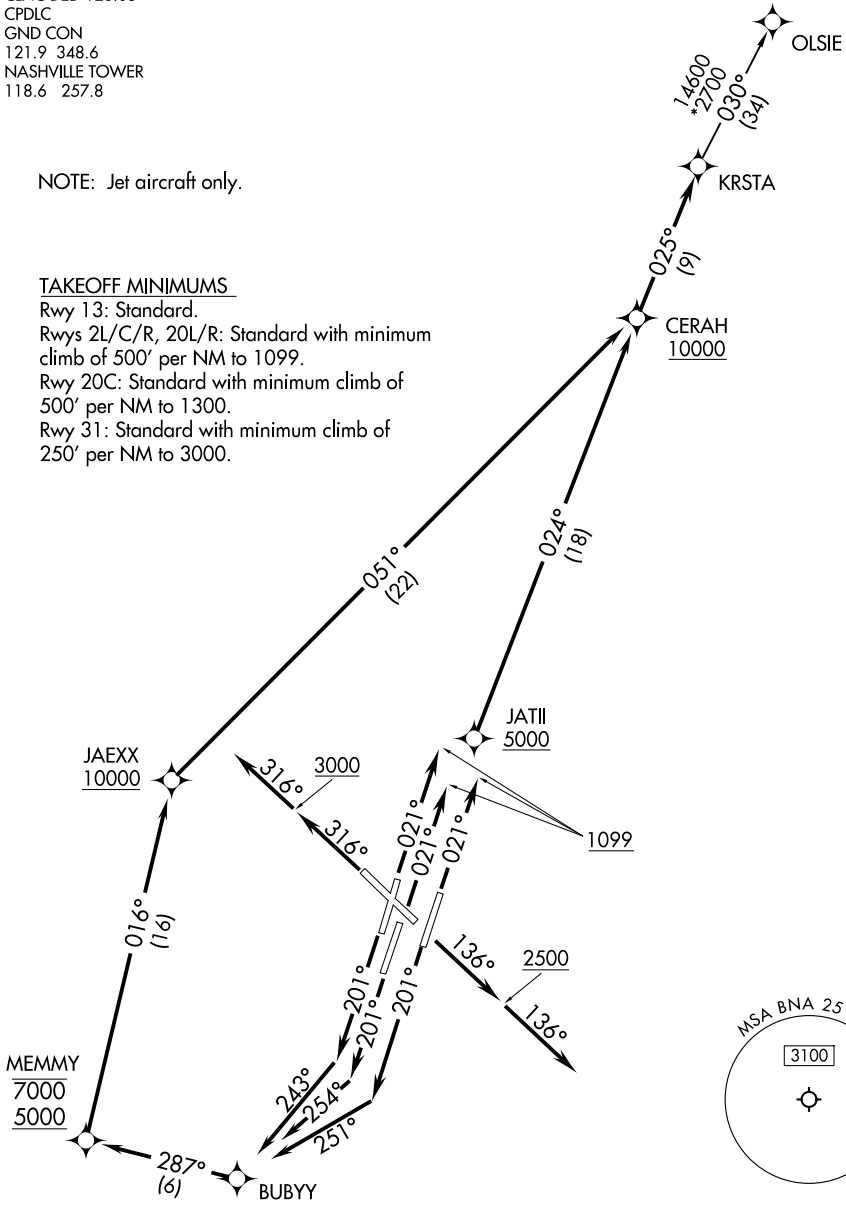
RADAR required.

TOP ALTITUDE:
15000

NOTE: Jet aircraft only.

TAKEOFF MINIMUMS

Rwy 13: Standard.
Rwys 2L/C/R, 20L/R: Standard with minimum climb of 500' per NM to 1099.
Rwy 20C: Standard with minimum climb of 500' per NM to 1300.
Rwy 31: Standard with minimum climb of 250' per NM to 3000.



NOTE: Chart not to scale.

(CONTINUED ON FOLLOWING PAGE)

KRSTA FOUR DEPARTURE (RNAV)

(KRSTA4.KRSTA) 27NOV25

NASHVILLE, TENNESSEE
NASHVILLE INTL (BNA)

SE-1, 27 NOV 2025 to 25 DEC 2025

SE-1, 27 NOV 2025 to 25 DEC 2025