

PORT ALSWORTH, ALASKA

AL-11796 (FAA)

25107

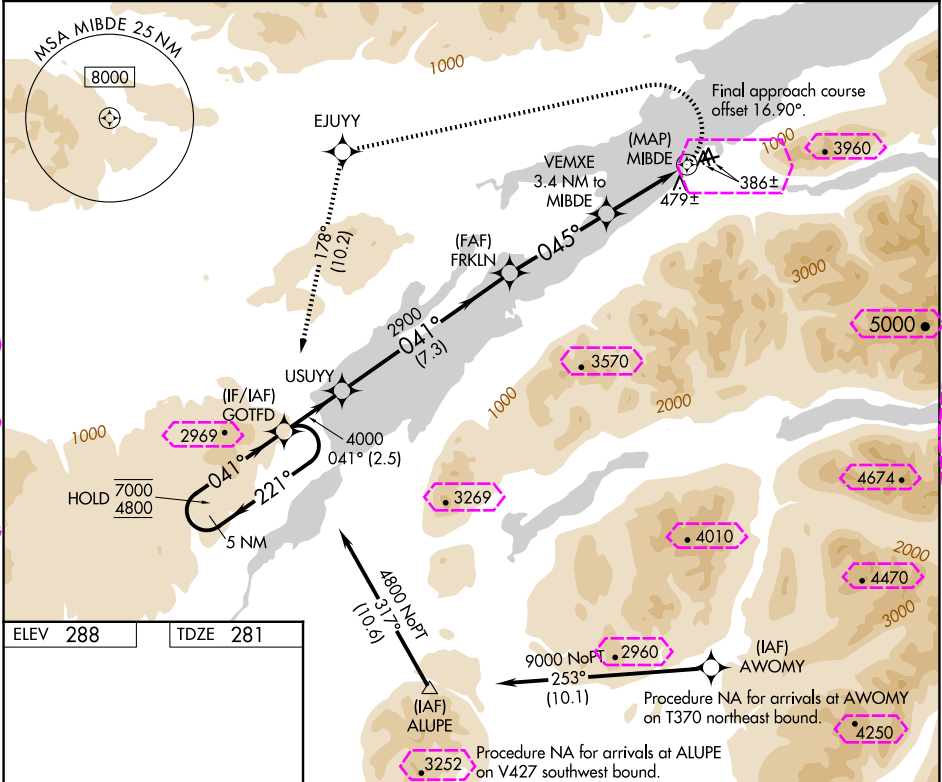
APP CRS	Rwy Idg	3849
045°	TDZE	281
	Apt Elev	288

RNAV (GPS) RWY 6R

WILDER RUNWAY (Ø5K)(PAKX)

RNP APCH - GPS.	MISSED APPROACH: Climbing left turn to 4800 direct EJUY and on track 178° to GOTFD and hold, continue climb-in-hold to 4800.
Procedure NA at night. Rwy 6R helicopter visibility reduction below 1 SM NA. Circling NA south of Rwy 6R-24L.	

AWOS-3P 118.025	ANCHORAGE CENTER 118.8 351.8	CTAF 122.9
--------------------	---------------------------------	---------------



ELEV 288	TDZE 281

5 NM Holding Pattern	GOTFD	Visual Segment - Obstacles.	4800	EJUY	tr 178°	GOTFD
7000	4800	4000	2900	1580		
		2.5 NM	7.3 NM	4.1 NM	3.4 NM	0.5 NM
CATEGORY	A	B	C	D		
LNAV MDA	860-1	579 (600-1)	NA			
CIRCLING	1280-1¼ 992 (1000-1¼)	1980-1½ 1692 (1700-1½)	NA			

PORT ALSWORTH, ALASKA
Orig-A 16MAY24

60°12'N-154°19'W

WILDER RUNWAY (Ø5K)(PAKX)
RNAV (GPS) RWY 6R

PORT ALSWORTH, ALASKA

AL-11796 (FAA)

25219

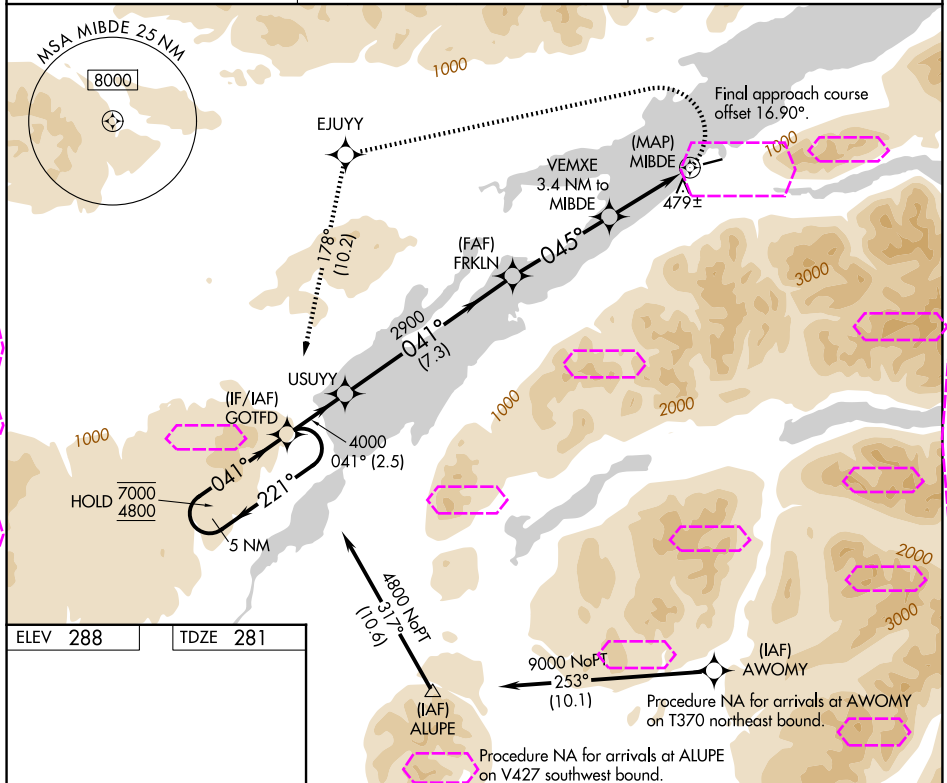
APP CRS	Rwy Ldg	3849
045°	TDZE	281
	Apt Elev	288

RNAV (GPS) RWY 6R

WILDER RUNWAY (Ø5K)(PAKX)

RNP APCH - GPS.	MISSED APPROACH: Climbing left turn to 4800 direct EJUY and on track 178° to GOTFD and hold, continue climb-in-hold to 4800.
Procedure NA at night. Rwy 6R helicopter visibility reduction below 1 SM NA. Circling NA south of Rwy 6R-24L.	

AWOS-3P 118.025	ANCHORAGE CENTER 118.8 351.8	CTAF 122.9
--------------------	---------------------------------	---------------



	5 NM Holding Pattern GOTFD Visual Segment - Obstacles.				4800	EJUY	tr 178°	GOTFD		
	7000	4800	221°	041°	4000	041°	2900	045°	1580	MIBDE
		2.5 NM		7.3 NM		4.1 NM		3.4 NM		0.5 NM
CATEGORY	A		B		C		D			
LNAV MDA	860-1		579 (600-1)		NA		NA			
CIRCLING	1280-1¼ 992 (1000-1¼)		1980-1½ 1692 (1700-1½)		NA		NA			

PORT ALSWORTH, ALASKA
Orig-A 16MAY24

60°12'N-154°19'W

WILDER RUNWAY (Ø5K)(PAKX)
RNAV (GPS) RWY 6R

AK, 07 AUG 2025 to 02 OCT 2025

AK, 07 AUG 2025 to 02 OCT 2025