

VALKARIA, FLORIDA

AL-11694 (FAA)

24361

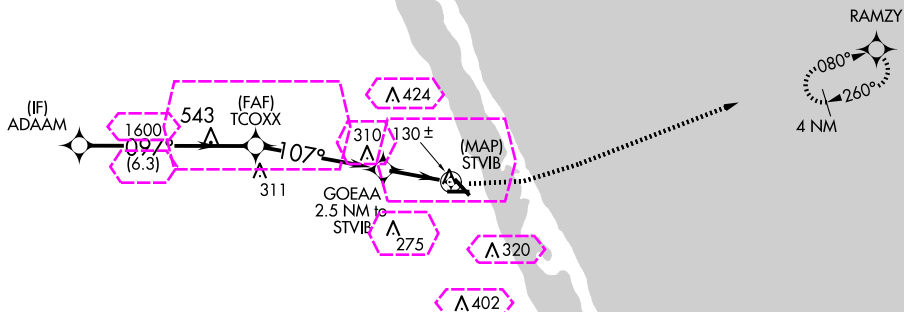
APP CRS 107°	Rwy Idg TDZE Apt Elev	NA NA 26
------------------------	-----------------------------	-------------------------------------

RNAV (GPS)-B
VALKARIA (X59)

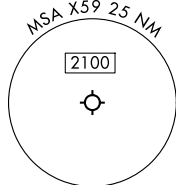
RNP APCH - GPS.

▼ Circling Rwy 10, 14, 28 NA at night. Rwy 10, 14, and 28 helicopter visibility reduction below 1 SM NA. When local altimeter setting not received, use MSL altimeter setting and increase all MDAs 40 feet and visibility Cat C $\frac{1}{4}$ SM.

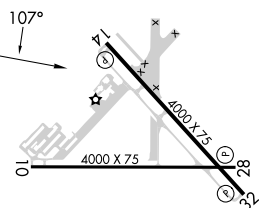
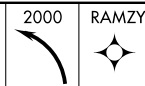
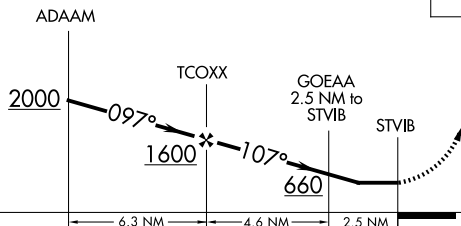
MISSED APPROACH: Climbing left turn to 2000 direct RAMZY and hold.

AWOS-3PT
119.525ORLANDO APP CON
132.65 281.425AUNICOM
122.725 (CTAF) 0

SE-3, 10 JUL 2025 to 07 AUG 2025



ELEV 26



CATEGORY	A	B	C	D
CIRCLING	500-1	474 (500-1)	620-1½ 594 (600-1½)	780-2½ 754 (800-2½)

MIRL Rwy 14-32 0

VALKARIA, FLORIDA
Orig 26DEC24

27°58'N-80°34'W

RNAV (GPS)-B

VALKARIA, FLORIDA

AL-11694 (FAA)

25219

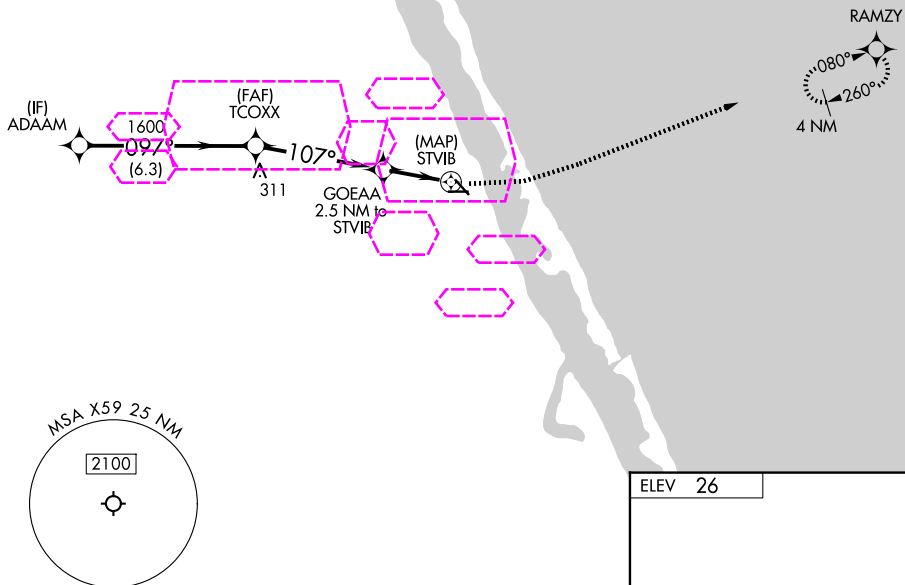
APP CRS	Rwy Ldg	N/A
107°	TDZE	N/A
	Apt Elev	26

RNAV (GPS)-B
VALKARIA (X59)

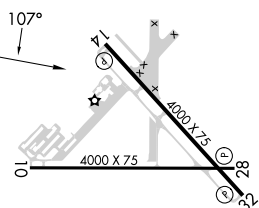
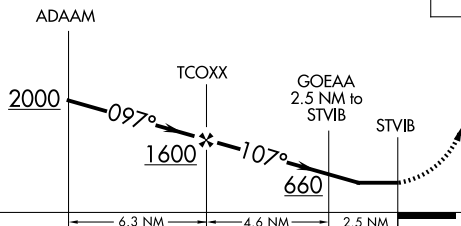
RNP APCH - GPS.

▼ Circling Rwy 10, 14, 28 NA at night. Rwy 10, 14, and 28 helicopter visibility reduction below 1 SM NA. When local altimeter setting not received, use MSL altimeter setting and increase all MDAs 40 feet and visibility Cat C $\frac{1}{4}$ SM.

MISSED APPROACH: Climbing left turn to 2000 direct RAMZY and hold.

AWOS-3PT
119.525ORLANDO APP CON
126.025 281.425AUNICOM
122.725 (CTAF) 0

ELEV 26



CATEGORY	A	B	C	D
CIRCLING	500-1	474 (500-1)	620-1½ 594 (600-1½)	780-2½ 754 (800-2½)

MIRL Rwy 14-32 0

VALKARIA, FLORIDA
Orig 26DEC24

27°58'N-80°34'W

RNAV (GPS)-B