

QUINTER, KANSAS

AL-11599 (FAA)

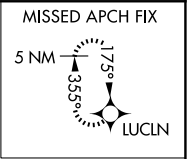
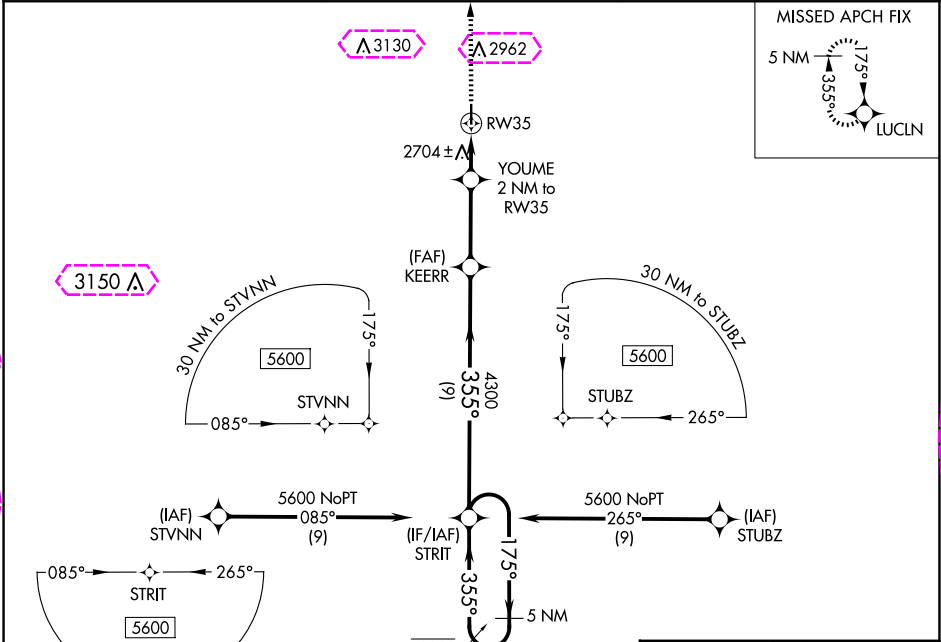
22083

WAAS CH 42644 W35A	APP CRS 355°	Rwy Idg 4000 TDZE 2631 Apt Elev 2637
--	------------------------	---

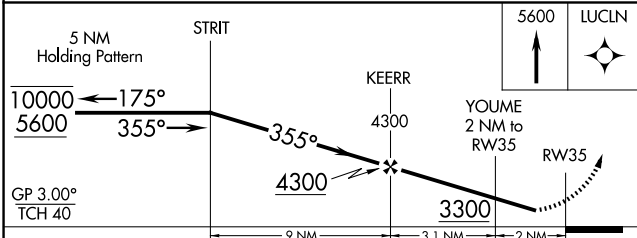
RNAV (GPS) RWY 35
GOVE COUNTY (1QK)

RNP APCH-GPS. ▼ Rwy 35 helicopter visibility reduction below 3/4 SM NA. ▲ NA Baro-VNAV NA. Use Hill City altimeter setting.	MISSED APPROACH: Climb to 5600 direct LUCLN and hold.
---	---

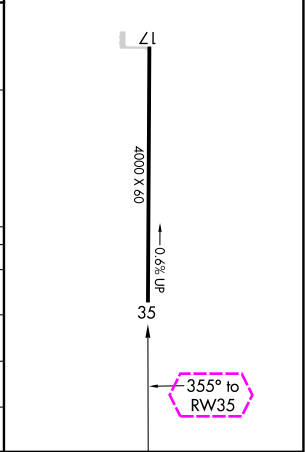
HLC ASOS 118.425	DENVER CENTER 132.7 226.675	CTAF 122.90
----------------------------	---------------------------------------	-----------------------



ELEV 2637	TDZE 2631
MIRL Rwy 17-35	



CATEGORY	A	B	C	D
LPV DA	3001-1	370 (400-1)	NA	NA
LNAV/VNAV DA	3001-1	370 (400-1)	NA	NA
LNAV MDA	3080-1	449 (500-1)	NA	NA
CIRCLING	3340-1 703 (800-1)	3400-1 763 (800-1)	NA	NA



QUINTER, KANSAS
Orig 24MAR22

39°02'N-100°14'W

RNAV (GPS) RWY 35
GOVE COUNTY (1QK)

NC-2, 10 JUL 2025 to 07 AUG 2025

NC-2, 10 JUL 2025 to 07 AUG 2025

WAAS CH 42644 W35A	APP CRS 355°	Rwy Ldg 4000 TDZE 2631 Apt Elev 2637
--	------------------------	---

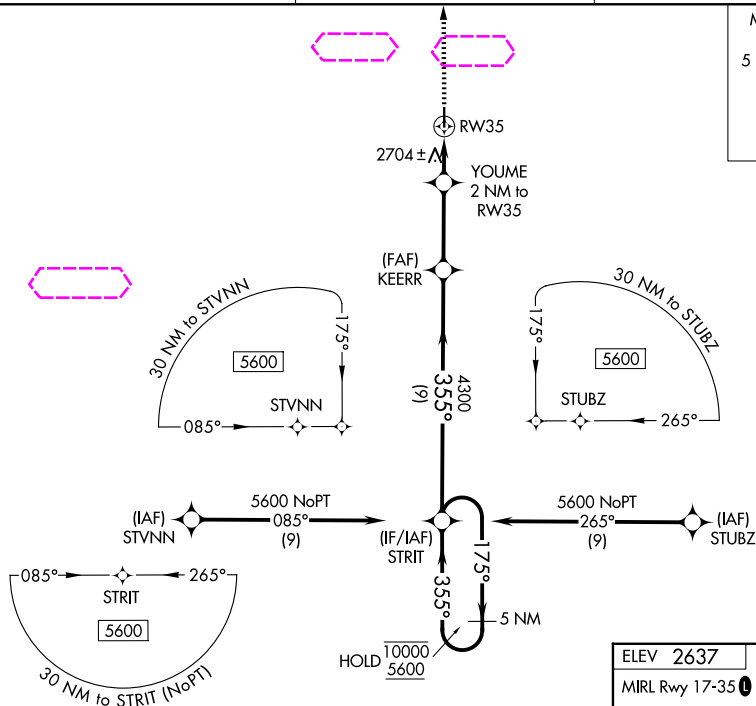
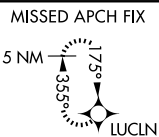
RNAV (GPS) RWY 35

RNP APCH-GPS.

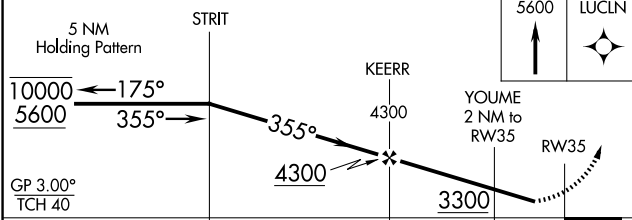
T	Rwy 35 helicopter visibility reduction below $\frac{3}{4}$ SM NA.
A NA	Baro-VNAV NA. Use Hill City altimeter setting.

MISSED APPROACH: Climb to 5600 direct LUCLN and hold.

HLC ASOS
118.425

DENVER CENTER
132.7 226.675CTAF
122.9 **L**

ELEV 2637	TDZE 2631
MIRL Rwy 17-35 L	



CATEGORY	A	B	C	D
LPV DA	3001-1	370 (400-1)	NA	
LNNAV/ VNAV DA	3001-1	370 (400-1)	NA	
LNNAV MDA	3080-1	449 (500-1)	NA	
CIRCUING	3340-1 703 (800-1)	3400-1 763 (800-1)	NA	

A vertical beam of length 4000 mm and width 60 mm is shown. A horizontal force of 0.6% UP is applied at the top. The beam is labeled with '4000 X 60' and '0.6% UP'.

QUINTER, KANSAS
Orig 24MAR22

39°02'N-100°14'W

GOVE COUNTY (10K)
RNAV (GPS) RWY 35