

RNAV (GPS) RWY 17

QUINTER, KANSAS

AL-11599 (FAA)

25219

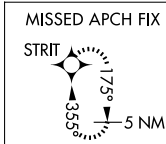
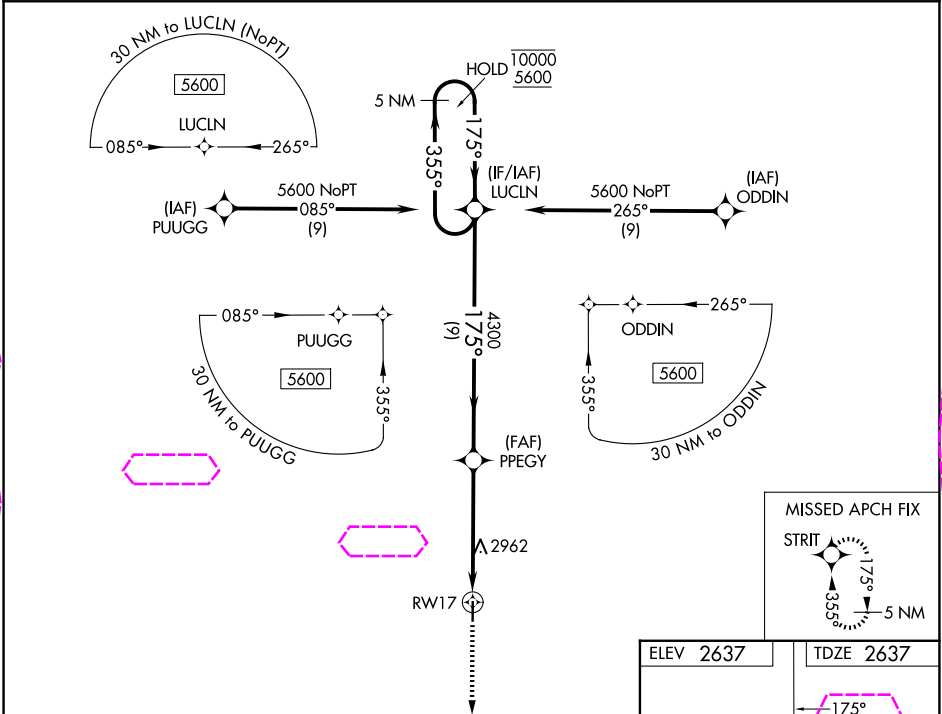
WAAS CH 81944 W17A	APP CRS 175°	Rwy Ldg 4000 TDZE 2637 Apt Elev 2637
--	------------------------	---

RNAV (GPS) RWY 17

GOVE COUNTY (1QK)

RNP APCH-GPS. Rwy 17 helicopter visibility reduction below 3/4 SM NA. Baro-VNAV NA. Use Hill City altimeter setting.	MISSED APPROACH: Climb to 5600 direct STRIT and hold.
--	---

HLC ASOS 118.425	DENVER CENTER 132.7 226.675	CTAF 122.90
----------------------------	---------------------------------------	-----------------------



5600

↑

STRIT

✦

PPEGY

4300

LUCLN

5 NM Holding Pattern

355°

10000

5600

175°

4300

RW17

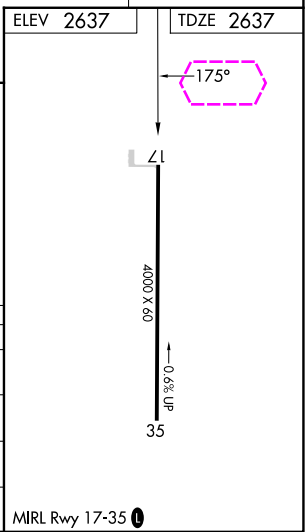
5.1 NM

9 NM

GP 3.00°

TCH 40

CATEGORY	A	B	C	D
LPV DA	3007-1	370 (400-1)	NA	
LNAV/VNAV DA	3430-2½	793 (800-2½)	NA	
LNAV MDA	3340-1	703 (800-1)	NA	
CIRCLING	3340-1 703 (800-1)	3400-1 763 (800-1)	NA	



QUINTER, KANSAS
Orig 24MAR22

39°02'N-100°14'W

GOVE COUNTY (1QK)
RNAV (GPS) RWY 17

NC-2, 07 AUG 2025 to 04 SEP 2025

NC-2, 07 AUG 2025 to 04 SEP 2025