

ENGLEHARD, NORTH CAROLINA

AL-T1596 (FAA)

25163

WAAS CH 40442 W11A	APP CRS 109°	Rwy Ldg TDZE Apt Elev 4700 6 6
--	------------------------	--

RNAV (GPS) RWY 11

HYDE COUNTY (7W6)

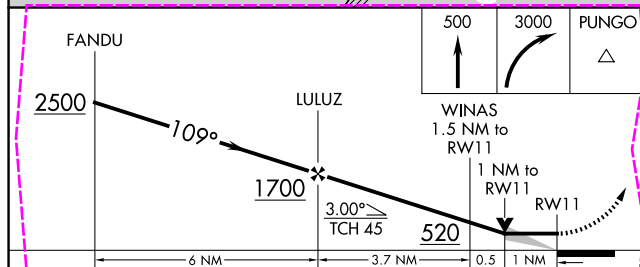
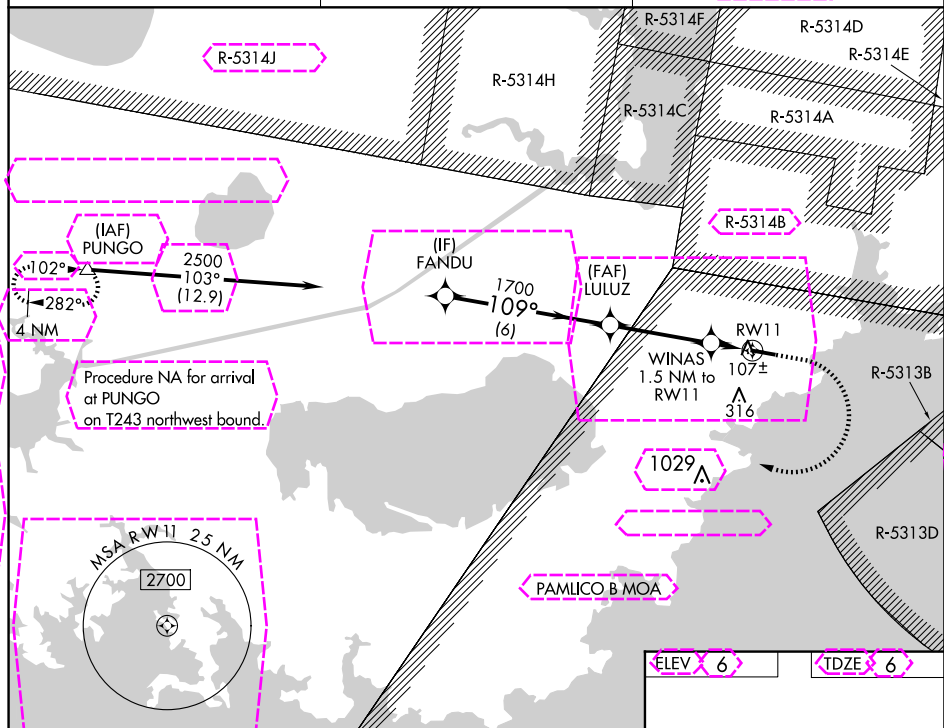
RNP APCH.

MISSED APPROACH: Climb to 500 then climbing right turn 3000 direct PUNGO and hold.

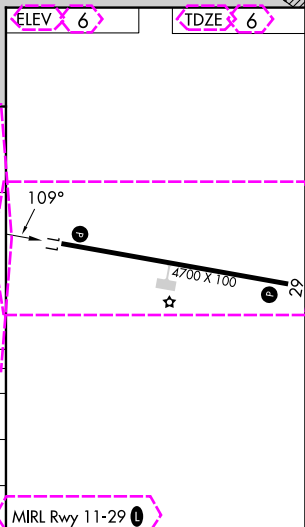
AWOS-3P
119.275

CHERRY POINT APP CON
119.75 360.775

UNICOM
122.7 (CTAF)



CATEGORY	A	B	C	D
LP MDA	360-1	354 (400-1)	NA	NA
RNAV MDA	360-1	354 (400-1)	NA	NA
CIRCLING	420-1 414 (500-1)	460-1 454 (500-1)	NA	NA



ENGLEHARD, NORTH CAROLINA
Orig-A 05DEC19

35°34'N-75°57'W

RNAV (GPS) RWY 11

HYDE COUNTY (7W6)

SE-2, 10 JUL 2025 to 07 AUG 2025

