

FREEPORT, PENNSYLVANIA

AL-11585 (FAA)

23362

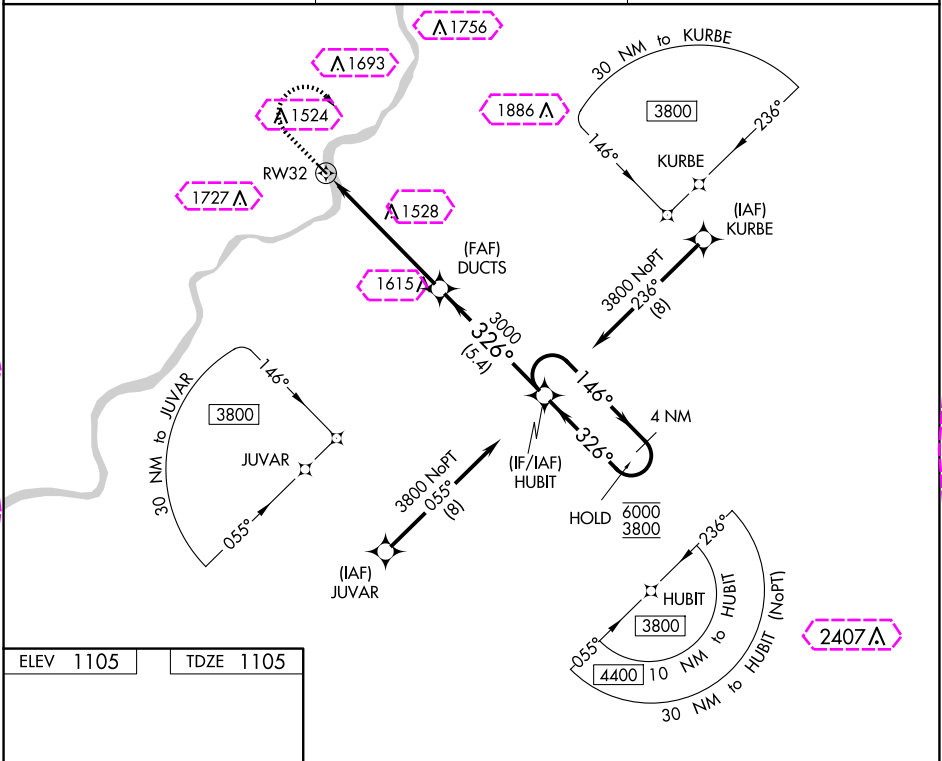
WAAS CH <b>50143</b> <b>W32A</b>	APP CRS <b>326°</b>	Rwy Idg TDZE Apt Elev	<b>2800</b> <b>1105</b> <b>1105</b>
--	------------------------	-----------------------------	---

# RNAV (GPS) RWY 32

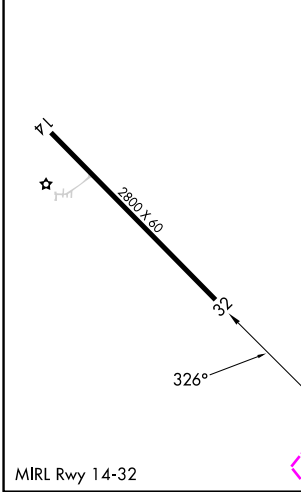
MCVILLE (6P7)

RNP APCH.	MISSED APPROACH: Climb to 2200 then climbing right turn to 4000 direct HUBIT and hold.
▼ Procedure NA at night. Rwy 32 helicopter visibility reduction below 1 SM NA. Use Pittsburgh/Butler Rgnl altimeter setting.	

BTP AWOS-3PT <b>121.45</b>	JOHNSTOWN APP CON ★ <b>121.2</b>	UNICOM <b>123.0</b> (CTAF)
-------------------------------	-------------------------------------	-------------------------------



ELEV 1105	TDZE 1105
-----------	-----------



2200	4000	HUBIT	Visual Segment - Obstacles.	4 NM Holding Pattern
↑	↷	✧		
			DUCTS	HUBIT
			↗ 326°	↖ 326°
			3000	6000 3800
			5.8 NM	5.4 NM
CATEGORY	A	B	C	D
LP MDA	1840-1	735 (800-1)	NA	
LNAV MDA	1840-1	735 (800-1)	NA	
<b>CIRCLING</b>	1860-1 755 (800-1)	1880-1 775 (800-1)	NA	

FREEPORT, PENNSYLVANIA  
Orig 08NOV18

40°44'N-79°36'W

# RNAV (GPS) RWY 32

MCVILLE (6P7)

NE-4, 10 JUL 2025 to 07 AUG 2025

NE-4, 10 JUL 2025 to 07 AUG 2025

FREEPORT, PENNSYLVANIA

AL-11585 (FAA)

25219

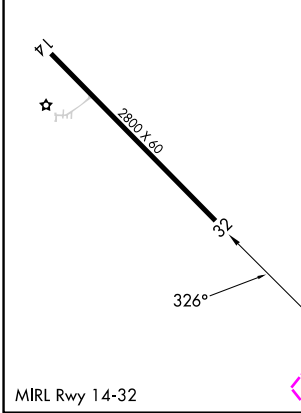
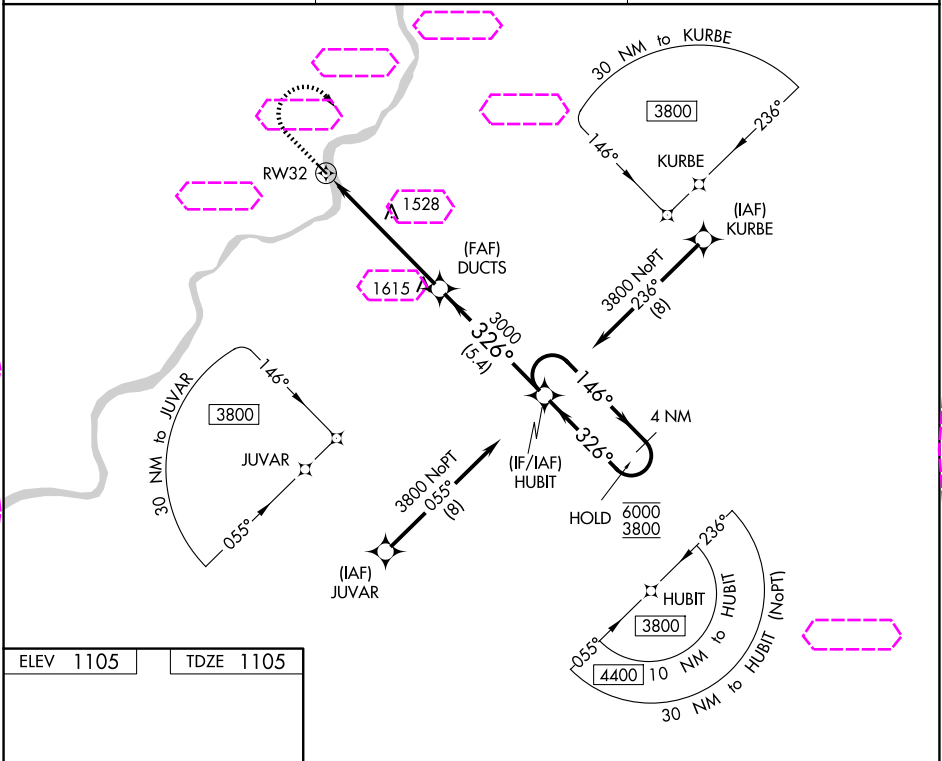
WAAS CH <b>50143</b> <b>W32A</b>	APP CRS <b>326°</b>	Rwy Ldg TDZE Apt Elev	<b>2800</b> <b>1105</b> <b>1105</b>
--	------------------------	-----------------------------	---

# RNAV (GPS) RWY 32

MCVILLE (6P7)

RNP APCH.	MISSED APPROACH: Climb to 2200 then climbing right turn to 4000 direct HUBIT and hold.
▼ Procedure NA at night. Rwy 32 helicopter visibility reduction below 1 SM NA. Use Pittsburgh/Butler Rgnl altimeter setting.	

BTP AWOS-3PT <b>121.45</b>	JOHNSTOWN APP CON ★ <b>121.2</b>	UNICOM <b>123.0</b> (CTAF)
-------------------------------	-------------------------------------	-------------------------------



2200	4000	HUBIT	Visual Segment - Obstacles.	4 NM Holding Pattern
↑	↪	✧		
CATEGORY	A	B	C	D
LP MDA	1840-1	735 (800-1)	NA	
LNAV MDA	1840-1	735 (800-1)	NA	
CIRCLING	1860-1	1880-1	NA	
	755 (800-1)	775 (800-1)		

FREEPORT, PENNSYLVANIA  
Orig 08NOV18

40°44'N-79°36'W

# RNAV (GPS) RWY 32

MCVILLE (6P7)

NE-4, 07 AUG 2025 to 04 SEP 2025

NE-4, 07 AUG 2025 to 04 SEP 2025