

FREEPORT, PENNSYLVANIA

AL-11585 (FAA)

23362

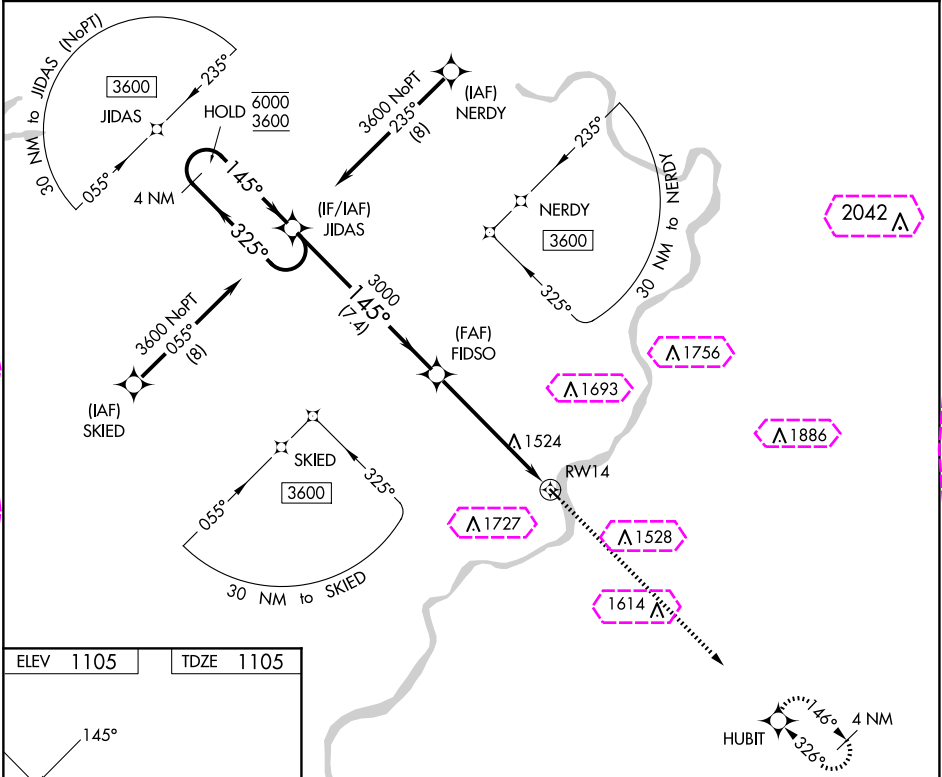
WAAS CH 97343 W14A	APP CRS 145°	Rwy Idg 2800 TDZE 1105 Apt Elev 1105
--	------------------------	---

RNAV (GPS) RWY 14

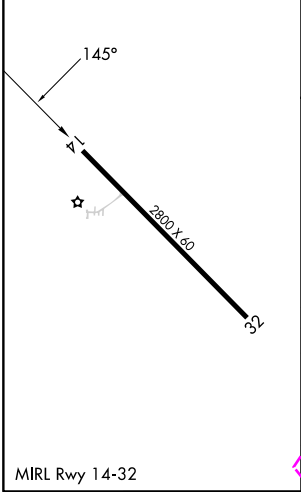
MCVILLE (6P7)

RNP APCH. ▼ Procedure NA at night. Rwy 14 helicopter visibility reduction below 1 SM NA. Use Pittsburgh/Butler Rgnl altimeter setting.	MISSED APPROACH: Climb to 4000 direct HUBIT and hold.
--	---

BTP AWOS-3PT 121.45	JOHNSTOWN APP CON ★ 121.2	UNICOM 123.0 (CTAF)
-------------------------------	-------------------------------------	-------------------------------



ELEV 1105	TDZE 1105
-----------	-----------



4 NM Holding Pattern		JIDAS	Visual Segment - Obstacles.		4000	HUBIT
6000 ← 325°		3600 → 145°	145°	FIDSO	3000	RWY14
		7.4 NM		5.8 NM		
CATEGORY		A	B	C	D	
LP MDA		1840-1	735 (800-1)	NA		
LNAV MDA		1840-1	735 (800-1)	NA		
CIRCLING		1860-1 755 (800-1)	1880-1 775 (800-1)	NA		

FREEPORT, PENNSYLVANIA
Orig 08NOV18

40°44'N-79°36'W

MCVILLE (6P7)

RNAV (GPS) RWY 14

NE-4, 10 JUL 2025 to 07 AUG 2025

NE-4, 10 JUL 2025 to 07 AUG 2025

FREEPORT, PENNSYLVANIA

AL-11585 (FAA)

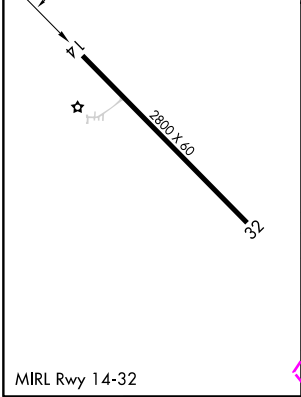
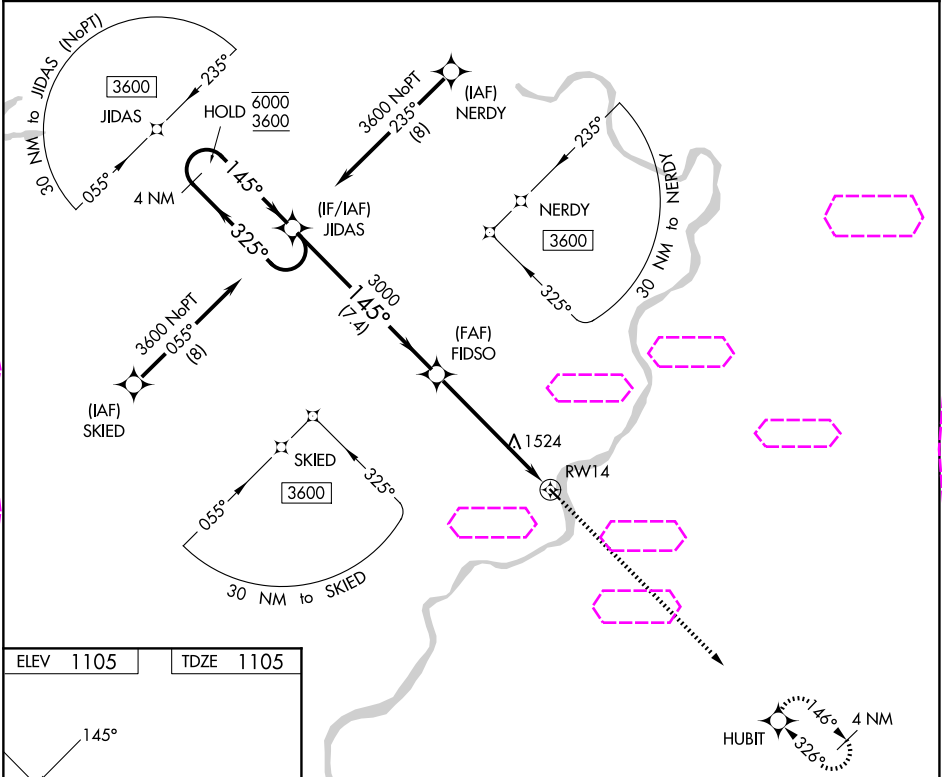
25219

WAAS CH 97343 W14A	APP CRS 145°	Rwy Ldg 2800 TDZE 1105 Apt Elev 1105
--	------------------------	---

RNAV (GPS) RWY 14
MCVILLE (6P7)

RNP APCH. ▼ Procedure NA at night. Rwy 14 helicopter visibility reduction below 1 SM NA. Use Pittsburgh/Butler Rgnl altimeter setting.	MISSED APPROACH: Climb to 4000 direct HUBIT and hold.
--	---

BTP AWOS-3PT 121.45	JOHNSTOWN APP CON ★ 121.2	UNICOM 123.0 (CTAF)
-------------------------------	-------------------------------------	-------------------------------



CATEGORY		A	B	C	D
LP	MDA	1840-1	735 (800-1)	NA	
LNAV	MDA	1840-1	735 (800-1)	NA	
CIRCLING		1860-1 755 (800-1)	1880-1 775 (800-1)	NA	

FREEPORT, PENNSYLVANIA
Orig 08NOV18

40°44'N-79°36'W

MCVILLE (6P7)
RNAV (GPS) RWY 14