




WAAS CH <b>60942</b> <b>W24A</b>	APP CRS <b>223°</b>	Rwy Idg TDZE Apt Elev	<b>7000</b> <b>6549</b> <b>6549</b>
--	------------------------	-----------------------------	---

RNAV (GPS) RWY 24  
DIXON (DWX)

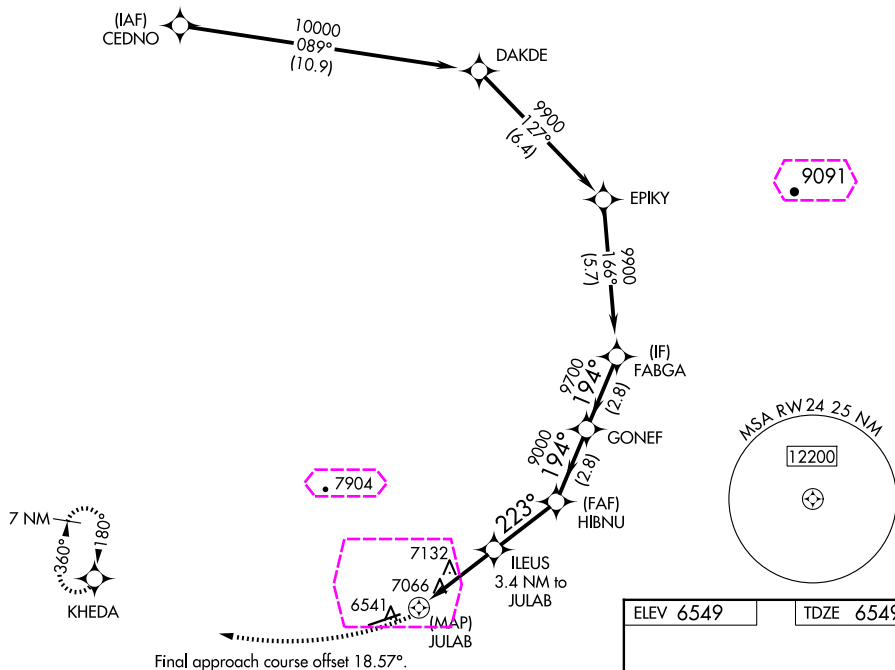
RNP APCH - GPS.



	Rwy 24 helicopter visibility reduction below 1 SM NA.
	Straight-in Rwy 24 NA at night, Circling Rwy 24 NA at night.
	

**MISSED APPROACH:** Climbing right turn to 9500 direct KHEDA and hold, continue climb-in-hold to 9500.

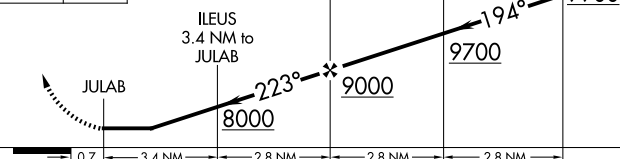
AWOS-3PT  
**119.425**

DENVER CENTER  
120.475 235.975

CTAF  
122.9 L

9500	KHEDA
	

### Visual Segment - Obstacles.

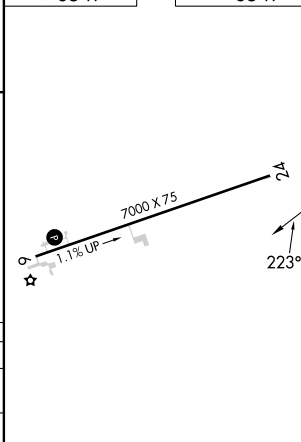


0.7	3.41 N/m	2.0 N/m	2.0 N/m	2.0 N/m
0.7	3.41 N/m	2.0 N/m	2.0 N/m	2.0 N/m

CATEGORY		A	B	C	D
LP	MDA	7400-1 851 (900-1)	7400-1¼ 851 (900-1¼)	7400-2½	851 (900-2½)
LNAV	MDA	7420-1 871 (900-1)	7420-1¼ 871 (900-1¼)	7420-2½	871 (900-2½)
<b>CIRCLING</b>		7420-1¼	871 (900-1¼)	7440-2¼ 891 (900-2¼)	7900-3 1351 (1400-3)

ELEV 6549		TDZE 6549
-----------	--	-----------

TDZE	6549
------	------



MIRL Rwy 6-24 **L**  
REIL Rwy 6 and 24 **L**

DIXON, WYOMING  
Orig-A 03NOV22

41°02'N-107°30'W

DIXON (DWX)  
RNAV (GPS) RWY 24

DIXON, WYOMING

AL-11441 (FAA)

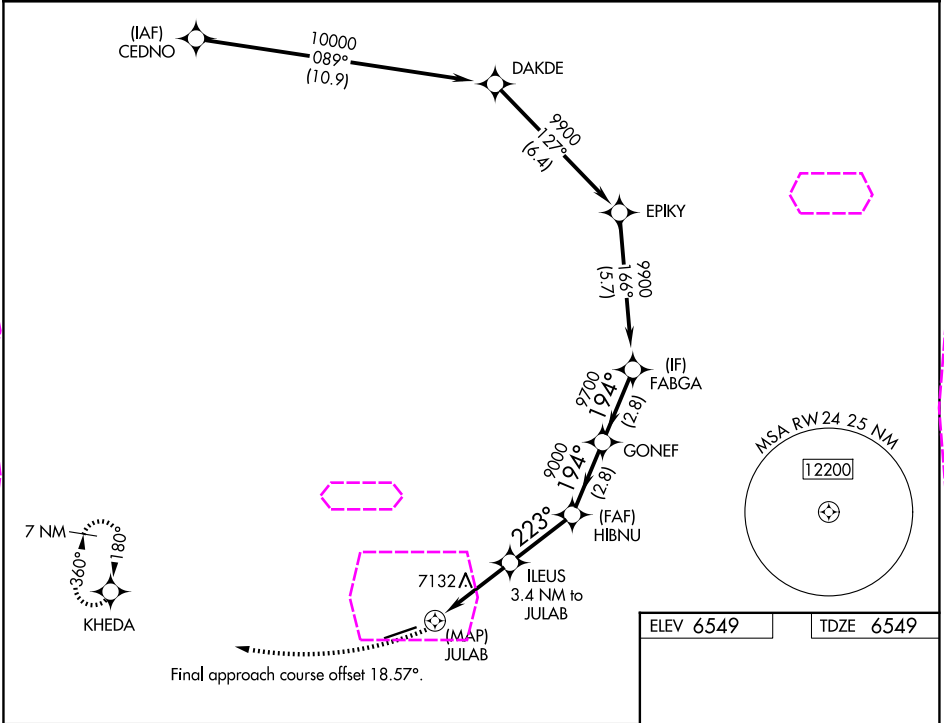
25219

WAAS CH <b>60942</b> <b>W24A</b>	APP CRS <b>223°</b>	Rwy Ldg TDZE <b>6549</b> Apt Elev <b>6549</b>
--	------------------------	---

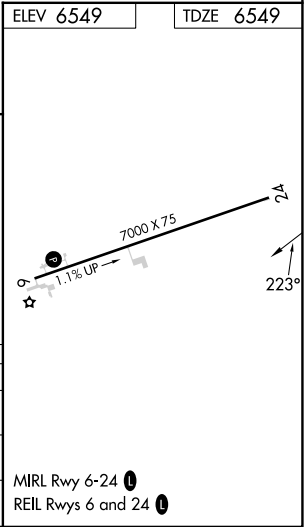
**RNAV (GPS) RWY 24**  
DIXON (DWX)

RNP APCH - GPS.		MISSED APPROACH: Climbing right turn to 9500 direct KHEDA and hold, continue climb-in-hold to 9500.
Rwy 24 helicopter visibility reduction below 1 SM NA.		
Straight-in Rwy 24 NA at night, Circling Rwy 24 NA at night.		

AWOS-3PT <b>119.425</b>	DENVER CENTER <b>120.475 235.975</b>	CTAF <b>122.90</b>
----------------------------	---	-----------------------



9500 KHEDA		Visual Segment - Obstacles.			
JULAB		ILEUS 3.4 NM to JULAB	HIBNU	GONEF	FABGA
8000		223°	9000	194°	9900
0.7		3.4 NM	2.8 NM	2.8 NM	2.8 NM
CATEGORY	A	B	C	D	
LP MDA	7400-1 851 (900-1)	7400-1¼ 851 (900-1¼)	7400-2½	851 (900-2½)	
LNAV MDA	7420-1 871 (900-1)	7420-1¼ 871 (900-1¼)	7420-2½	871 (900-2½)	
CIRCLING	7420-1¼	871 (900-1¼)	7440-2¾ 891 (900-2¾)	7900-3 1351 (1400-3)	



DIXON, WYOMING  
Orig-A 03NOV22

41°02'N-107°30'W

DIXON (DWX)  
**RNAV (GPS) RWY 24**

NW-1, 07 AUG 2025 to 04 SEP 2025

NW-1, 07 AUG 2025 to 04 SEP 2025