

GLEN ULLIN, NORTH DAKOTA

AL-11438 (FAA)

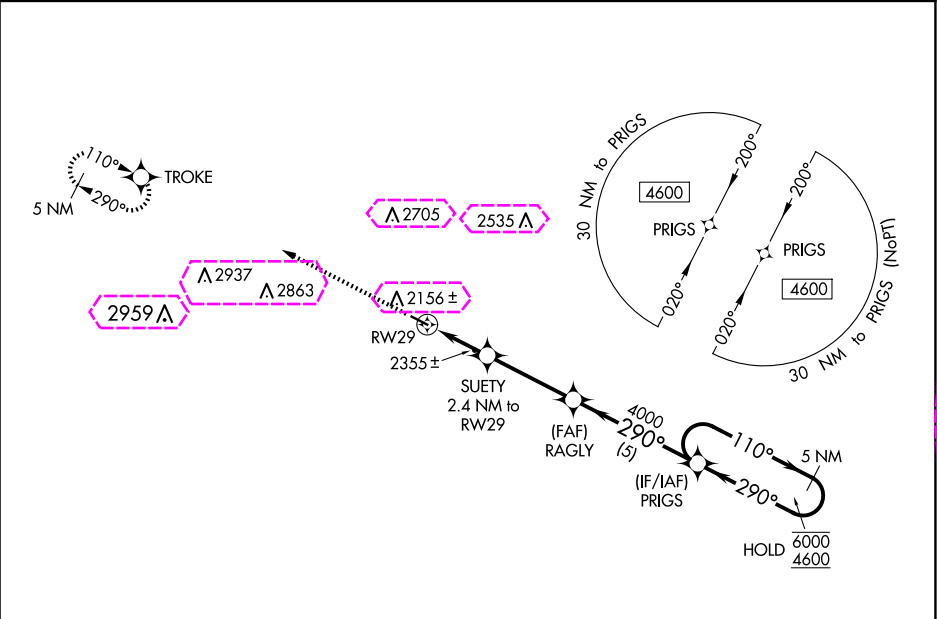
18312

WAAS CH <b>45642</b> <b>W29A</b>	APP CRS <b>290°</b>	Rwy Idg <b>3799</b> TDZE <b>2091</b> Apt Elev <b>2091</b>
--	------------------------	---

RNAV (GPS) RWY 29

GLEN ULLIN RGNL (D57)

RNP APCH.		MISSED APPROACH: Climb to 4600 direct TROKE and hold.
▼ Rwy 29 helicopter visibility reduction below ¾ SM NA. For uncompensated Baro-VNAV systems, LNAV/VNAV NA below -19°C or above 54°C.		
AWOS-3P 118.75	MINNEAPOLIS CENTER 124.25 236.825	CTAF 122.9 0



ELEV 2091	TDZE 2091
-----------	-----------

4600 TROKE		VGSI and RNAV glidepath not coincident (VGSI Angle 3.00/TCH 26).		PRIGS 5 NM Holding Pattern	
*LNAV only.		SUETY 2.4 NM to RW29		RAGLY 4000	
RW29		*1.6 NM to RW29		2900*	
1.6 NM		0.8 NM		3.5 NM	
CATEGORY		A		B	
LPV DA		2341-1		250 (300-1)	
LNAV/VNAV DA		2561-1 3/8		470 (500-1 3/8)	
LNAV MDA		2620-1		529 (600-1)	
2640-1		2680-1		2800-2	
549 (600-1)		589 (600-1)		709 (800-2)	
CIRCLING					

MIRL Rwy 11-29  
GLEN ULLIN, NORTH DAKOTA  
Orig 08NOV18

46°49'N-101°52'W

GLEN ULLIN RGNL (D57)  
RNAV (GPS) RWY 29

GLEN ULLIN, NORTH DAKOTA

AL-11438 (FAA)

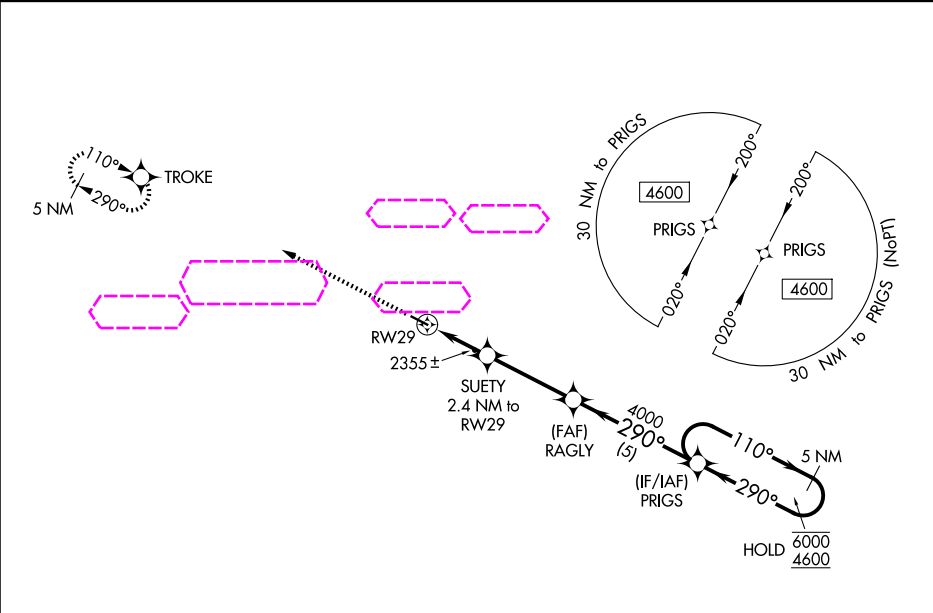
25219

WAAS CH <b>45642</b> <b>W29A</b>	APP CRS <b>290°</b>	Rwy Ldg <b>3799</b> TDZE <b>2091</b> Apt Elev <b>2091</b>
--	------------------------	---

RNAV (GPS) RWY 29

GLEN ULLIN RGNL (D57)

RNP APCH.		MISSED APPROACH: Climb to 4600 direct TROKE and hold.
▼ Rwy 29 helicopter visibility reduction below ¾ SM NA. For uncompensated Baro-VNAV systems, LNAV/VNAV NA below -19°C or above 54°C.		
AWOS-3P 118.75	MINNEAPOLIS CENTER 124.25 236.825	CTAF 122.9 0



ELEV 2091	TDZE 2091
-----------	-----------

4600 TROKE		VGSI and RNAV glidepath not coincident (VGSI Angle 3.00/TCH 26).		PRIGS 5 NM Holding Pattern	
*LNAV only.		SUETY 2.4 NM to RW29		RAGLY 4000	
RW29		*1.6 NM to RW29		2900*	
1.6 NM		0.8 NM		3.5 NM	
CATEGORY		A		B	
LPV DA		2341-1		250 (300-1)	
LNAV/VNAV DA		2561-1 3/8		470 (500-1 3/8)	
LNAV MDA		2620-1		529 (600-1)	
CIRCLING		2640-1		2680-1	
549 (600-1)		589 (600-1)		2800-2	
				709 (800-2)	

GLEN ULLIN, NORTH DAKOTA  
Orig 08NOV18

46°49'N-101°52'W

GLEN ULLIN RGNL (D57)  
RNAV (GPS) RWY 29