

FINLEYVILLE, PENNSYLVANIA

AL-11430 (FAA)

20366

APP CRS	Rwy Idg	N/A
138°	TDZE	N/A
	Apt Elev	1236

RNAV (GPS)-A

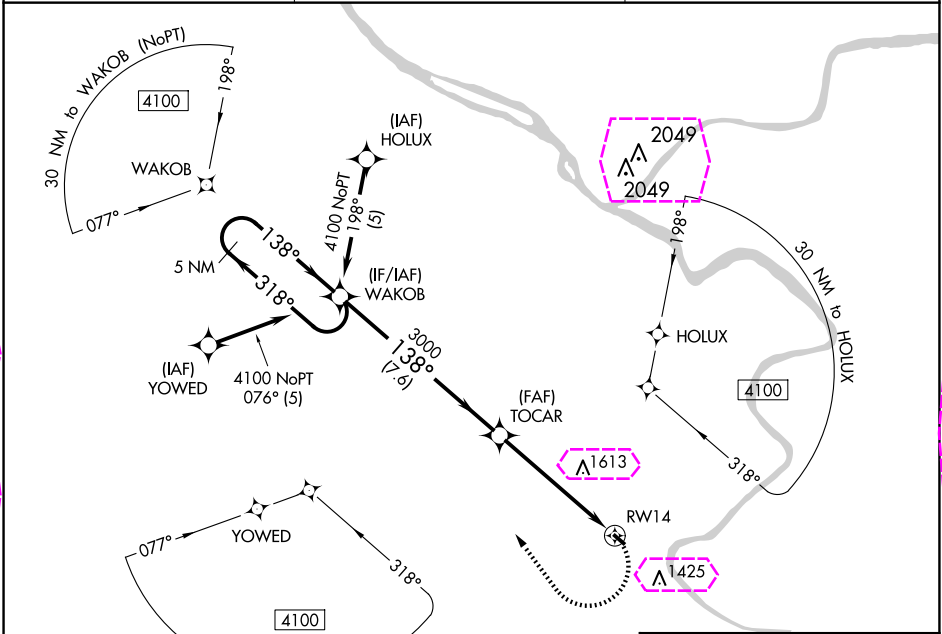
FINLEYVILLE AIRPARK (G05)

▼ **▲** NA

DME/DME RNP-0.3 NA. Procedure NA at night. Rwy 14 helicopter visibility reduction below 1 SM NA. Use Allegheny County altimeter setting; when not received, use Pittsburgh Intl altimeter setting and increase all MDA 40 feet.

MISSED APPROACH:
Climbing right turn to 4100
direct WAKOB and hold.

AGC ASOS 120.55	PITTSBURGH APP CON 119.35 285.575	UNICOM 123.0 (CTAF) 0
---------------------------	---	---------------------------------



5 NM Holding Pattern

WAKOB

4100

318°

138°

138°

TOCAR

3000

3.00°

TCH 30

RW14

7.6 NM

5.5 NM

4100 WAKOB

ELEV 1236

138° to RW14

2497 X 30

1 28 UP

32

CATEGORY	A	B	C	D
1820-1	584 (600-1)			

CIRCLING

1820-1

584 (600-1)

NA

URL Rwy 14-32 0

FINLEYVILLE, PENNSYLVANIA
Orig 12OCT17

40°15'N-80°01'W

FINLEYVILLE AIRPARK (G05)
RNAV (GPS)-A

NE-4, 10 JUL 2025 to 07 AUG 2025

NE-4, 10 JUL 2025 to 07 AUG 2025

