

YUMA, COLORADO

AL-11429 (FAA)

20254

WAAS CH <b>61241</b> <b>W34A</b>	APP CRS <b>347°</b>	Rwy Idg TDZE <b>4201</b> Apt Elev <b>4138</b>
--	------------------------	---

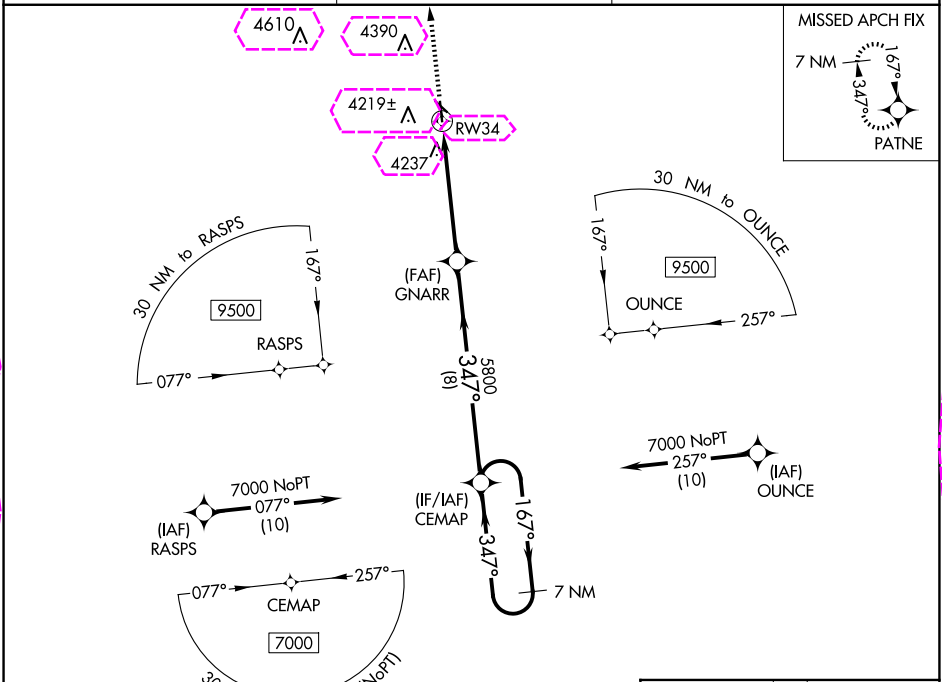
# RNAV (GPS) RWY 34

YUMA MUNI (2V6)

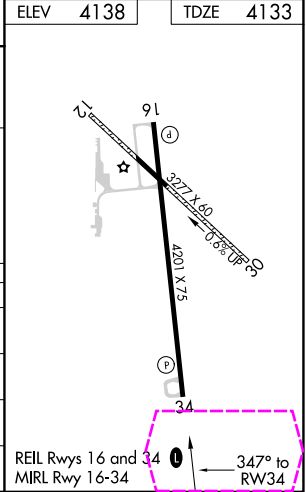
**⚠** Circling NA to Rws 12 and 30. For uncompensated Baro-VNAV Systems, LNAV/VNAV NA below -23°C (-9°F) or above 54°C (130°F), DME/DME RNP-0.3 NA.

MISSED APPROACH: Climb to 7000 direct PATNE and hold.

AWOS-3 <b>135.375</b>	DENVER CENTER <b>133.95 317.55</b>	UNICOM <b>122.8 (CTAF)</b> <b>0</b>
--------------------------	---------------------------------------	--



<div>⚠A4811±</div>		50 NM to CEMAP (N)			
7 NM Holding Pattern		CEMAP		VGSI and RNAV glidepath not coincident (VGSI Angle 3.00/TCH 39)	
7000		←167° 347°→		7000 PATNE	
GP 3.00° TCH 51		347°		* LNAV only	
		GNARR			
		5800		* 1 NM to RW34	
		5800		RW34	
		8 NM		4.1 NM	
				1 NM	
CATEGORY		A	B	C	D
LPV DA		4333-1 200 (200-1)			NA
LNAV/ VNAV	DA	4383-1 250 (300-1)			NA
LNAV MDA		4500-1 367 (400-1)			NA
<div>C CIRCLING</div>		4620-1 482 (500-1)	4640-1 502 (600-1)	4700-1½ 562 (600-1½)	NA



YUMA, COLORADO  
Orig 24MAY18

40°06'N-102°43'W

# RNAV (GPS) RWY 34

YUMA MUNI (2V6)

SW-1, 10 JUL 2025 to 07 AUG 2025

SW-1, 10 JUL 2025 to 07 AUG 2025

YUMA, COLORADO

AL-11429 (FAA)

25219

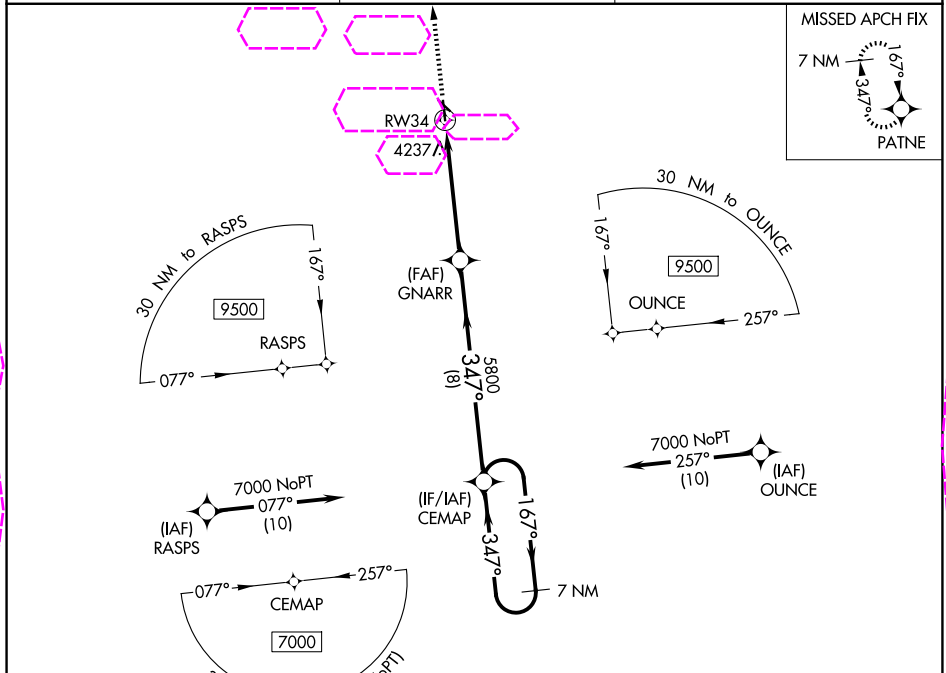
WAAS CH <b>61241</b> <b>W34A</b>	APP CRS <b>347°</b>	Rwy Ldg TDZE <b>4201</b> Apt Elev <b>4138</b>
--	------------------------	---

# RNAV (GPS) RWY 34

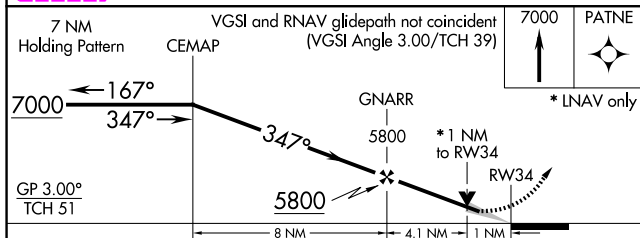
YUMA MUNI (2V6)

<b>⚠</b> Circling NA to Rws 12 and 30. For uncompensated Baro-VNAV Systems, LNAV/VNAV NA below -23°C (-9°F) or above 54°C (130°F), DME/DME RNP-0.3 NA.	MISSED APPROACH: Climb to 7000 direct PATNE and hold.
--	---

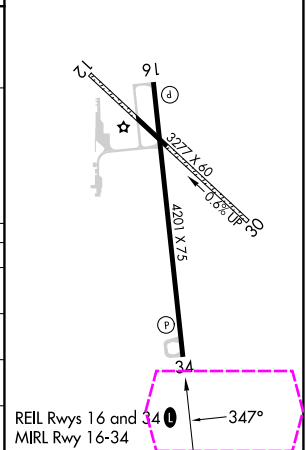
AWOS-3 <b>135.375</b>	DENVER CENTER <b>133.95 317.55</b>	UNICOM <b>122.8 (CTAF) 0</b>
--------------------------	---------------------------------------	---------------------------------



ELEV <b>4138</b>	TDZE <b>4133</b>
------------------	------------------



CATEGORY	A	B	C	D
LPV DA	4333-1	200 (200-1)		NA
LNAV/VNAV DA	4383-1	250 (300-1)		NA
LNAV MDA	4500-1	367 (400-1)		NA
CIRCLING	4620-1 482 (500-1)	4640-1 502 (600-1)	4700-1½ 562 (600-1½)	NA



YUMA, COLORADO  
Orig 24MAY18

40°06'N-102°43'W

# RNAV (GPS) RWY 34

SW-1, 07 AUG 2025 to 04 SEP 2025

SW-1, 07 AUG 2025 to 04 SEP 2025