

THERMOPOLIS, WYOMING

AL-11427 (FAA)

25163

APP CRS	Rwy Ldg	6370
066°	TDZE	4882
	Apt Elev	4892

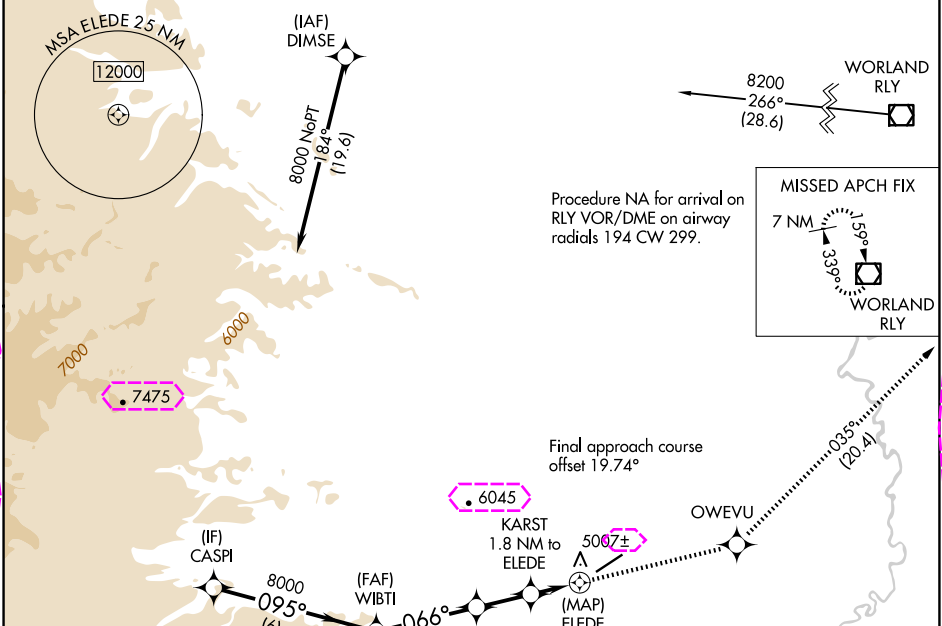
RNAV (GPS) RWY 5

HOT SPRINGS COUNTY (HSG)

⚠ Circling NA northwest of Rwy 5-23.
⚠ DME/DME RNP-0.3 NA.
Rwy 5 helicopter visibility reduction below ¾ SM NA.

MISSED APPROACH: Climb to 8200 direct OWEVU and on track 035° to RLY VOR/DME and hold.

AWOS-3PT 121.125	SALT LAKE CENTER 133.25 285.6	UNICOM 122.8 (CTAF) 0
----------------------------	---	---------------------------------



ELEV 4892		TDZE 4882	
VGSI and descent angles not coincident (VGSI Angle 2.75/TCH 39).		8200	OWEVU
CASPI			tr 035°
WIBTI			RLY
SHOTE 3.8 NM to ELEDE			
KARST 1.8 NM to ELEDE			
ELEDE			
6620		5860	
6 NM		3.7 NM	2 NM
095°		066°	
8000		8000	
3.54° TCH 50			
0.3% UP			
6370 X 75			
066°			
CATEGORY	A	B	C
LNNAV MDA	5240-1	358 (400-1)	NA
CIRCLING	5320-1 428 (500-1)	5540-1 648 (700-1)	5580-2 688 (700-2)
	5880-3 988 (1000-2)		
REIL Rwy 5 and 23 0		MIRL Rwy 5-23 0	

THERMOPOLIS, WYOMING
Orig 02MAR17

43°43'N-108°23'W

HOT SPRINGS COUNTY (HSG)
RNAV (GPS) RWY 5

NW-1, 10 JUL 2025 to 07 AUG 2025

NW-1, 10 JUL 2025 to 07 AUG 2025

APP CRS	Rwy Ldg	6370
066°	TDZE	4882
	Apt Elev	4892

RNAV (GPS) RWY 5

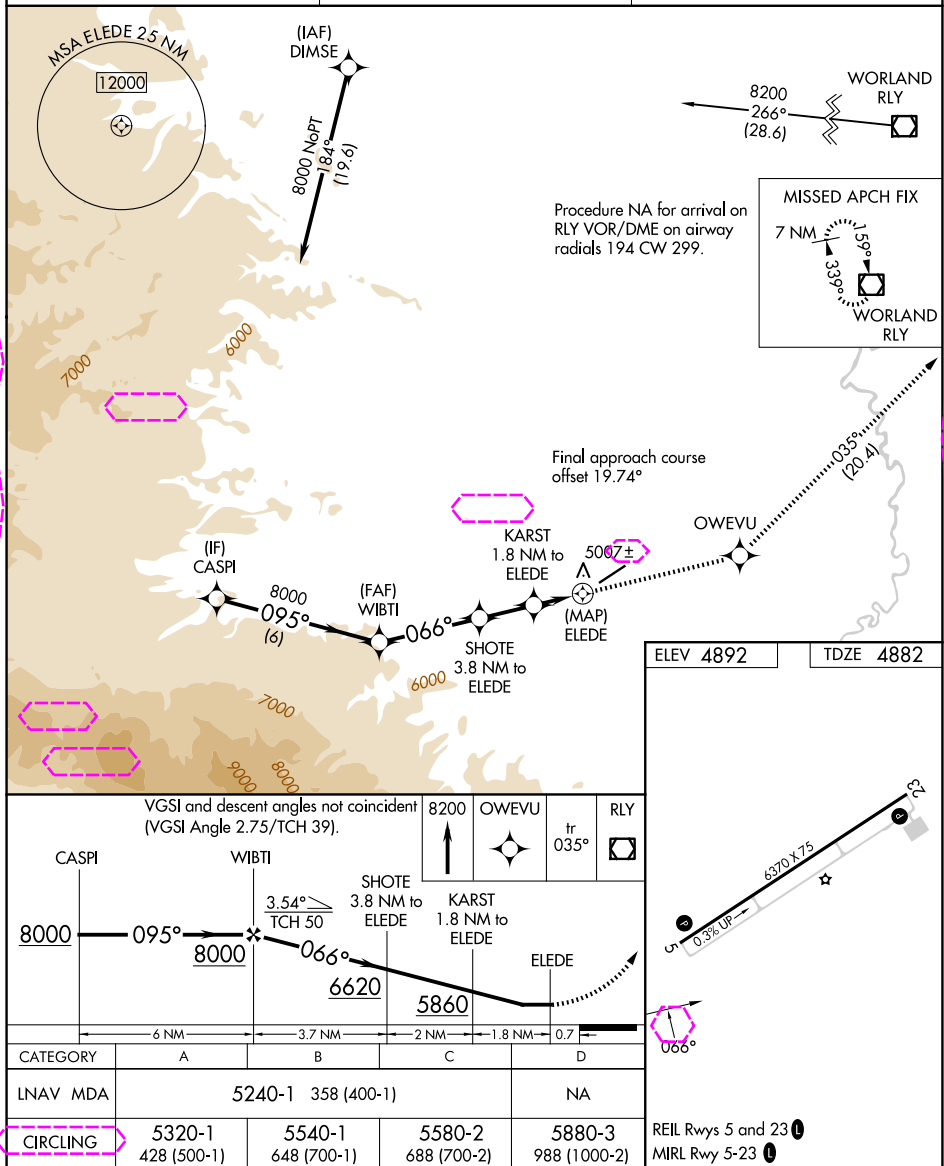
HOT SPRINGS COUNTY (HSG)

T Circling NA northwest of Rwy 5-23.
A DME/DME RNP-0.3 NA.
Rwy 5 helicopter visibility reduction below $\frac{3}{4}$ SM NA.

MISSED APPROACH: Climb to 8200 direct OWEVU and on track 035° to RLY VOR/DME and hold.

AWOS-3PT
121.125

SALT LAKE CENTER
133.25 285.6

UNICOM
122.8 (CTAF) **L**

THERMOPOLIS, WYOMING
Orig 02MAR17

43°43'N-108°23'W

HOT SPRINGS COUNTY (HSG)
RNAV (GPS) RWY 5

NW-1, 07 AUG 2025 to 04 SEP 2025

NW-1, 07 AUG 2025 to 04 SEP 2025