

WAAS CH 53340 W23A	APP CRS 227°	Rwy Ldg 6370 TDZE 4892 Apt Elev 4892
--	------------------------	---

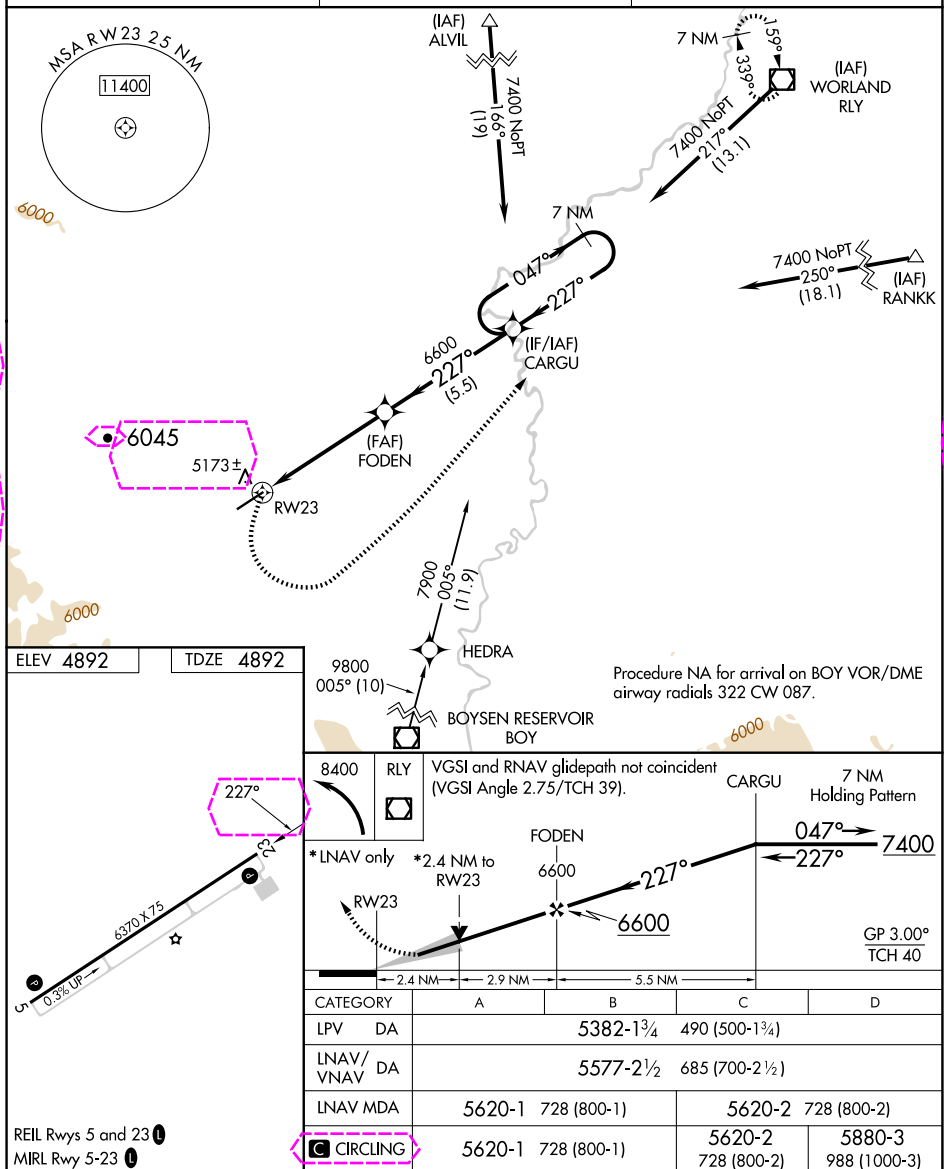
RNAV (GPS) RWY 23
HOT SPRINGS COUNTY (HSG)

T For uncompensated Baro-VNAV systems, LNAV/VNAV NA
A below -24°C (-11°F) or above 54°C (130°F). Circling NA
northwest of Rwy 5-23. DME/DME RNP-0.3 NA.

MISSED APPROACH: Climbing left turn to 8400 direct RLY VOR/DME and hold.

AWOS-3PT
121.125

SALT LAKE CENTER
133.25 285.6

UNICOM
122.8 (CTAF) **L**

THERMOPOLIS, WYOMING
Orig 02MAR17

43°43'N-108°23'W

HOT SPRINGS COUNTY (HSG)
RNAV (GPS) RWY 23

THERMOPOLIS, WYOMING

AL-11427 (FAA)

25219

WAAS CH 53340 W23A	APP CRS 227°	Rwy Ldg TDZE 4892 Apt Elev 4892
--	------------------------	---

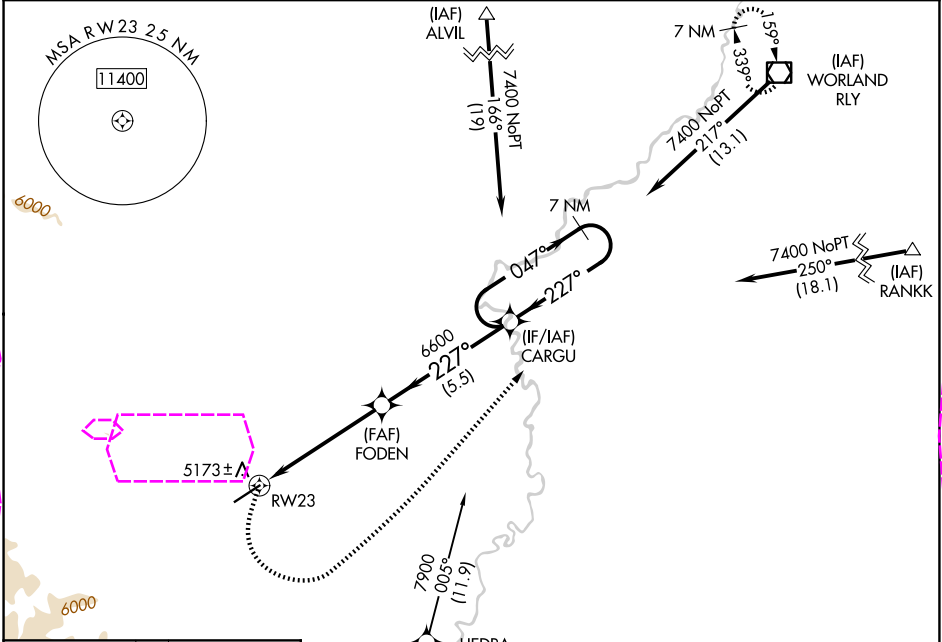
RNAV (GPS) RWY 23

HOT SPRINGS COUNTY (HSG)

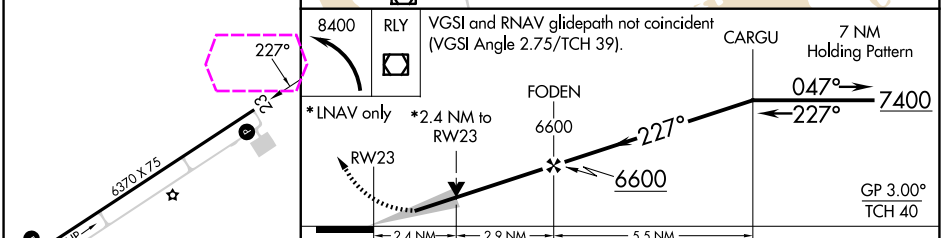
⚠ For uncompensated Baro-VNAV systems, LNAV/VNAV NA below -24°C (-11°F) or above 54°C (130°F). Circling NA northwest of Rwy 5-23. DME/DME RNP-0.3 NA.

MISSED APPROACH: Climbing left turn to 8400 direct RLY VOR/DME and hold.

AWOS-3PT 121.125	SALT LAKE CENTER 133.25 285.6	UNICOM 122.8 (CTAF) 0
----------------------------	---	---------------------------------



ELEV 4892	TDZE 4892
------------------	------------------



REIL Rwy 5 and 23 0 MIRL Rwy 5-23 0	CIRCLING	5620-1 728 (800-1)	5620-2 728 (800-2)	5880-3 988 (1000-3)
--	-----------------	--------------------	--------------------	---------------------

NW-1, 07 AUG 2025 to 04 SEP 2025

NW-1, 07 AUG 2025 to 04 SEP 2025