

SPANISH FORK, UTAH

AL-11420 (FAA)

25163

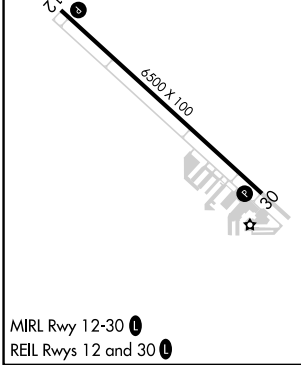
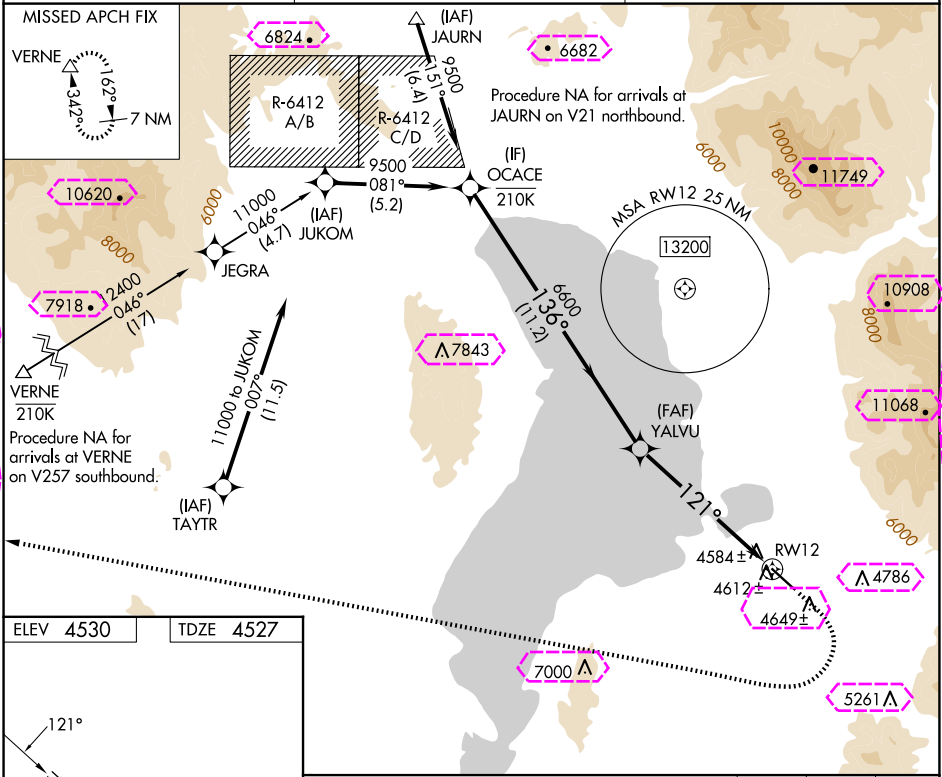
WAAS CH 82342 W12B	APP CRS 121°	Rwy Ldg TDZE 4527 Apt Elev 4530
--	------------------------	---

RNAV (GPS) Z RWY 12

SPANISH FORK MUNI/WOODHOUSE FLD (SPK)

RNP APCH - GPS.	MISSED APPROACH: (Do not exceed 185K until VERNE) Climb to 5000 then climbing right turn to 11500 direct VERNE and hold. *Missed approach requires minimum climb of 380 feet per NM to 7600; if unable to meet climb gradient, see RNAV (GPS) Y RWY 12.
-----------------	--

AWOS-3PT 119.275	SALT LAKE CITY APP CON 118.85 233.7	CTAF 122.90
----------------------------	---	-----------------------



OCACE		Visual Segment - Obstacles.		5000	11500	VERNE
9500		YALVU		↑	↷	△
136°		6600		RW12		
11.2 NM		6.4 NM				
CATEGORY	A	B	C	D		
LP MDA*	4980-1	453 (500-1)	4980-1 $\frac{3}{8}$	453 (500-1 $\frac{3}{8}$)		
LNAV MDA*	4980-1	453 (500-1)	4980-1 $\frac{3}{8}$	453 (500-1 $\frac{3}{8}$)		

SPANISH FORK, UTAH
Amdt 2 26DEC24

SPANISH FORK MUNI/WOODHOUSE FLD (SPK)
40°09'N-111°40'W
RNAV (GPS) Z RWY 12

SW-4, 10 JUL 2025 to 07 AUG 2025

SW-4, 10 JUL 2025 to 07 AUG 2025

SPANISH FORK, UTAH

AL-11420 (FAA)

25219

WAAS CH 82342 W12B	APP CRS 121°	Rwy Ldg TDZE 4527 Apt Elev 4530
--	------------------------	---

RNAV (GPS) Z RWY 12

SPANISH FORK MUNI/WOODHOUSE FLD (SPK)

RNP APCH - GPS.

▼

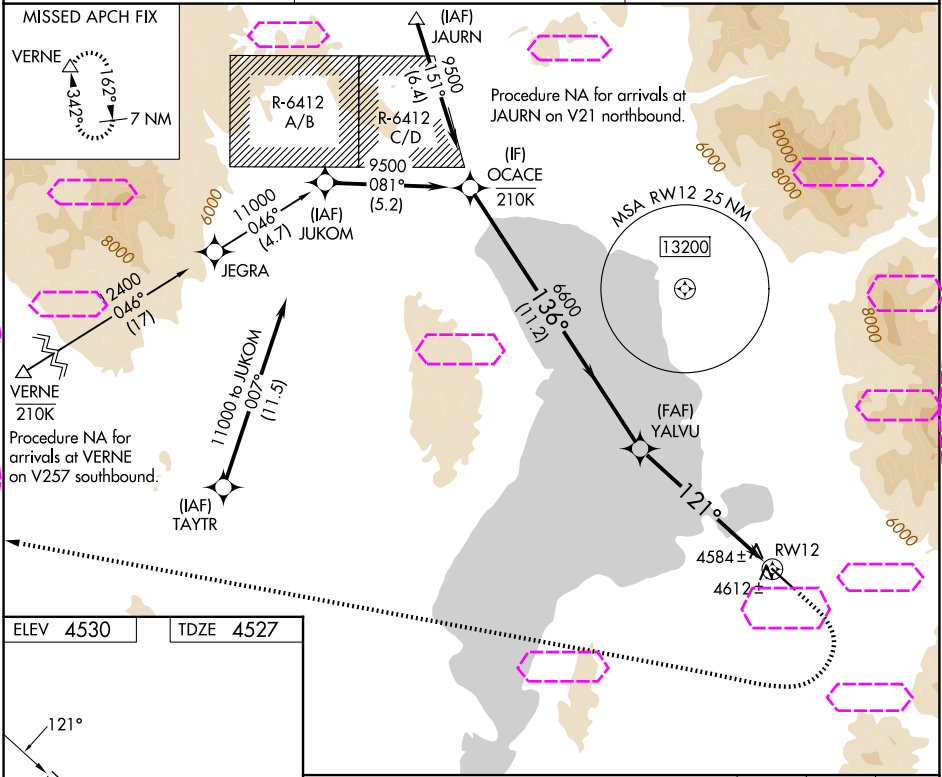
NA

17°C

Rwy 12 helicopter visibility reduction below 3/4 SM NA. When local altimeter setting not received, use PVU altimeter setting and increase all MDAs 20 feet.

MISSED APPROACH: (Do not exceed 185K until VERNE) Climb to 5000 then climbing right turn to 11500 direct VERNE and hold.
*Missed approach requires minimum climb of 380 feet per NM to 7600; if unable to meet climb gradient, see RNAV (GPS) Y RWY 12.

AWOS-3PT 119.275	SALT LAKE CITY APP CON 118.85 233.7	CTAF 122.90
----------------------------	---	-----------------------



ELEV 4530 TDZE 4527

MIRL Rwy 12-30
REIL Rwy 12 and 30

OCACE		Visual Segment - Obstacles.		5000	11500	VERNE
9500		YALVU		↑	↷	△
136°		6600		RW12		
121°		11.2 NM		6.4 NM		
CATEGORY	A	B	C	D		
LP MDA*	4980-1	453 (500-1)	4980-1 3/8	453 (500-1 3/8)		
LNAV MDA*	4980-1	453 (500-1)	4980-1 3/8	453 (500-1 3/8)		

SW-4, 07 AUG 2025 to 04 SEP 2025

SW-4, 07 AUG 2025 to 04 SEP 2025

SPANISH FORK, UTAH
Amdt 2 26DEC24

SPANISH FORK MUNI/WOODHOUSE FLD (SPK)
40°09'N-111°40'W
RNAV (GPS) Z RWY 12