

SPANISH FORK, UTAH

AL-11420 (FAA)

25163

WAAS CH 78042 W12A	APP CRS 121°	Rwy Ldg TDZE 4527 Apt Elev 4530
--	------------------------	---

RNAV (GPS) Y RWY 12

SPANISH FORK MUNI/WOODHOUSE FLD (SPK)

RNP APCH - GPS.

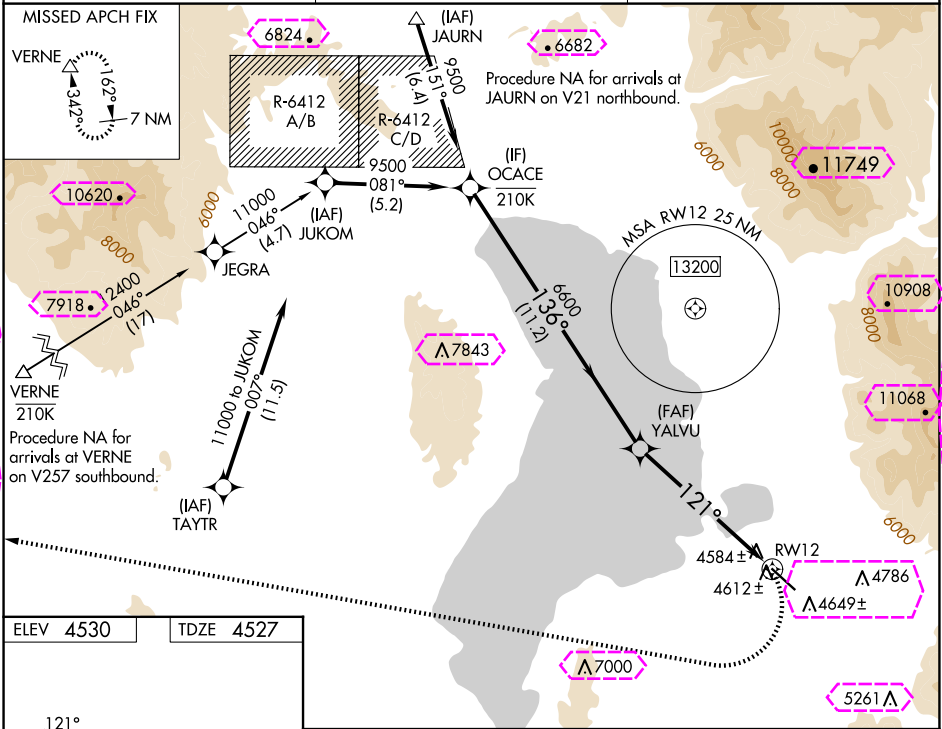
NA

-21°C

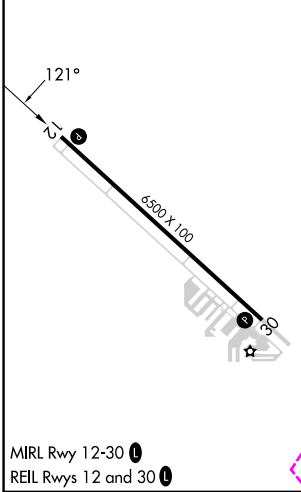
Rwy 12 helicopter visibility reduction below ¾ SM NA. When local altimeter setting not received, use PVU altimeter setting and increase all MDAs 20 feet. Circling NA for Cat D northeast of Rwy 12-30.

MISSED APPROACH: (Do not exceed 185K until turn completion) Climbing right turn to 11500 direct VERNE and hold.

AWOS-3PT 119.275	SALT LAKE CITY APP CON 118.85 233.7	CTAF 122.9
----------------------------	---	----------------------



ELEV 4530	TDZE 4527
------------------	------------------



MIRL Rwy 12-30
REIL Rwy 12 and 30

OCACE		Visual Segment - Obstacles.		11500	VERNE
9500		YALVU			
		136°			
		6600			
		121°			
		RW12			
		11.2 NM		6.4 NM	
CATEGORY	A	B	C	D	
LP MDA	6040-1¼ 1513 (1600-1¼)	6040-1½ 1513 (1600-1½)	6040-3	1513 (1600-3)	
LNAV MDA	6160-1¼ 1633 (1700-1¼)	6160-1½ 1633 (1700-1½)	6160-3	1633 (1700-3)	
CIRCLING	6160-1¼ 1630 (1700-1¼)	6160-1½ 1630 (1700-1½)	6160-3	1630 (1700-3)	

SPANISH FORK, UTAH
Amdt 2 26DEC24

SPANISH FORK MUNI/WOODHOUSE FLD (SPK)
40°09'N-111°40'W
RNAV (GPS) Y RWY 12

SW-4, 10 JUL 2025 to 07 AUG 2025

SW-4, 10 JUL 2025 to 07 AUG 2025

25219

WAAS CH 78042 W12A	APP CRS 121°	Rwy Ldg 6500 TDZE 4527 Apt Elev 4530
--	------------------------	---

RNAV (GPS) Y RWY 12

SPANISH FORK MUNI/WOODHOUSE FLD (SPK)

RNP APCH - GPS.	
-----------------	--

NA Rwy 12 helicopter visibility reduction below $\frac{3}{4}$ SM NA. When local altimeter setting not received, use PVU altimeter setting and increase all MDAs 20 feet. Circling NA for Cat D northeast of Rwy 12-30.

MISSED APPROACH: (Do not exceed 185K until turn completion) Climbing right turn to 11500 direct VERNE and hold.

AWOS-3PT
119.275

SALT LAKE CITY APP CON
118.85 233.7

CTAF
122.9 **L**

MISSED APCH FIX

VERNE
210K

Procedure NA for arrivals at VERNE on V257 southbound.

ELEV 4530		TDZE 4527
-----------	--	-----------

A diagram of a truss joint. A horizontal member is on the left, and a diagonal member extends to the right. The angle between the horizontal member and the diagonal member is labeled 121° . The diagonal member is labeled 6300×100 . A vertical member is on the right, and a horizontal member is at the bottom. A small square indicates a right angle between the vertical and horizontal members at the bottom right. A small circle with a dot is at the bottom right corner.

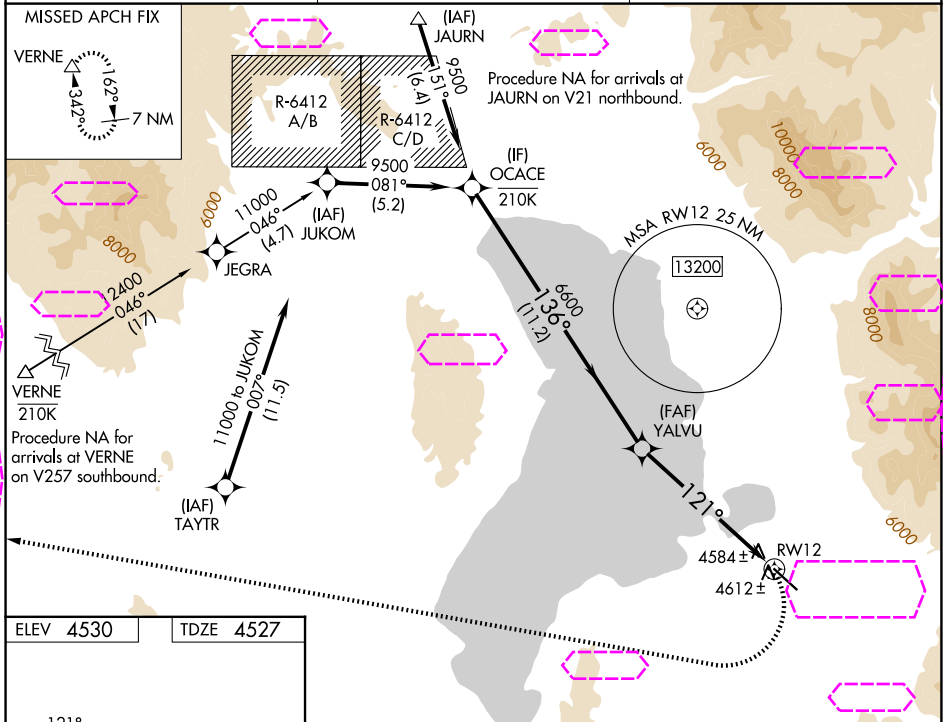
MIRL Rwy 12-30 **L**
REIL Rwy 12 and 30 **L**

SPANISH FORK, UTAH
Amdt 2 26DEC24

40°09'N-111°40'W

SPANISH FORK MUNI/WOODHOUSE FLD (SPK)

RNAV (GPS) Y RWY 12



SW-4, 07 AUG 2025 to 04 SEP 2025

Visual Segment - Obstacles.

OCACE 9500

YALVU 6600

136°

121°

RW12

11.2 NM

6.4 NM

CATEGORY	A	B	C	D
LP MDA	6040-1¼ 1513 (1600-1¼)	6040-1½ 1513 (1600-1½)	6040-3	1513 (1600-3)
LNAV MDA	6160-1¼ 1633 (1700-1¼)	6160-1½ 1633 (1700-1½)	6160-3	1633 (1700-3)
CIRCLING	6160-1¼ 1630 (1700-1¼)	6160-1½ 1630 (1700-1½)	6160-3	1630 (1700-3)