

SPANISH FORK, UTAH

AL-11420 (FAA)

25163

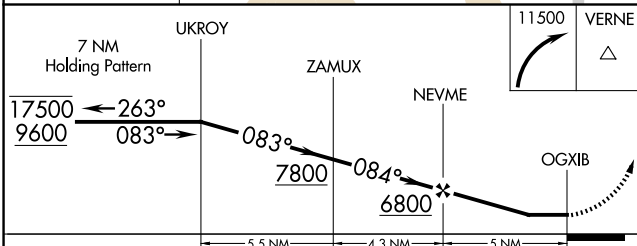
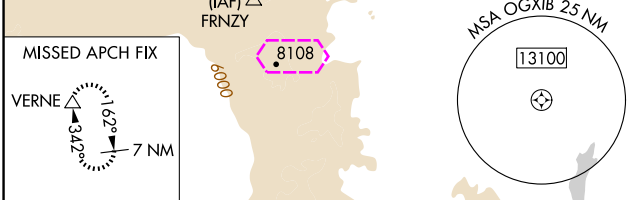
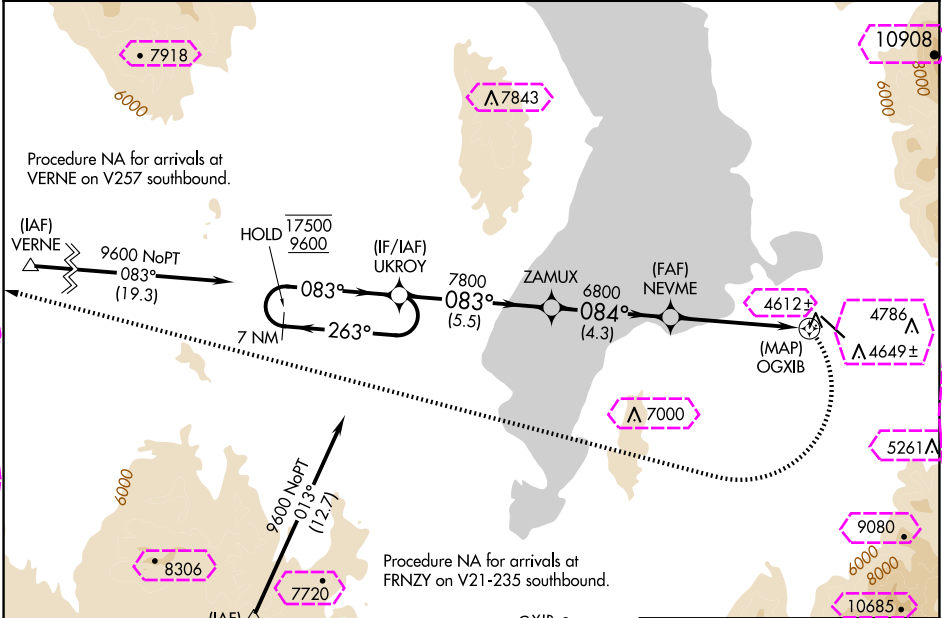
APP CRS <b>084°</b>	Rwy Ldg TDZE Apt Elev <b>N/A</b> <b>N/A</b> <b>4530</b>
------------------------	--

RNAV (GPS)-A

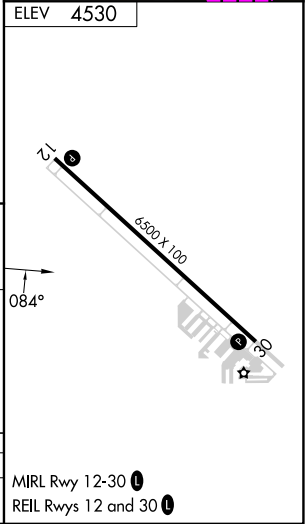
SPANISH FORK MUNI/WOODHOUSE FLD (SPK)

RNP APCH-GPS.	MISSED APPROACH: (Do not exceed 185K until turn completion) Climbing right turn to 11500 direct VERNE and hold.
NA -21°C	When local altimeter setting not received, use Provo altimeter setting and increase all MDAs 20 feet.

AWOS-3PT <b>119.275</b>	SALT LAKE CITY APP CON <b>118.85 233.7</b>	CTAF <b>122.9</b>
----------------------------	---	----------------------



CATEGORY	A	B	C	D
CIRCLING	6200-1¼ 1670 (1700-1¼)	6200-1½ 1670 (1700-1½)	6200-3 1670 (1700-3)	



SPANISH FORK, UTAH  
Amdt 1 03NOV22

SPANISH FORK MUNI/WOODHOUSE FLD (SPK)  
40°09'N-111°40'W  
RNAV (GPS)-A

SW-4, 10 JUL 2025 to 07 AUG 2025

SW-4, 10 JUL 2025 to 07 AUG 2025

SPANISH FORK, UTAH

AL-11420 (FAA)

25219

APP CRS <b>084°</b>	Rwy Ldg TDZE Apt Elev <b>4530</b>	N/A N/A <b>4530</b>
------------------------	--	---------------------------

# RNAV (GPS)-A

SPANISH FORK MUNI/WOODHOUSE FLD (SPK)

RNP APCH-GPS.	MISSED APPROACH: (Do not exceed 185K until turn completion) Climbing right turn to 11500 direct VERNE and hold.
NA -17°C	When local altimeter setting not received, use Provo altimeter setting and increase all MDAs 20 feet.

AWOS-3PT <b>119.275</b>	SALT LAKE CITY APP CON <b>118.85 233.7</b>	CTAF <b>122.9</b>
----------------------------	---	----------------------

