

BOWMAN, NORTH DAKOTA

AL-11025 (FAA)

20198

WAAS CH 42538 W31A	APP CRS 313°	Rwy Idg 5701 TDZE 2965 Apt Elev 2965
--	------------------------	---

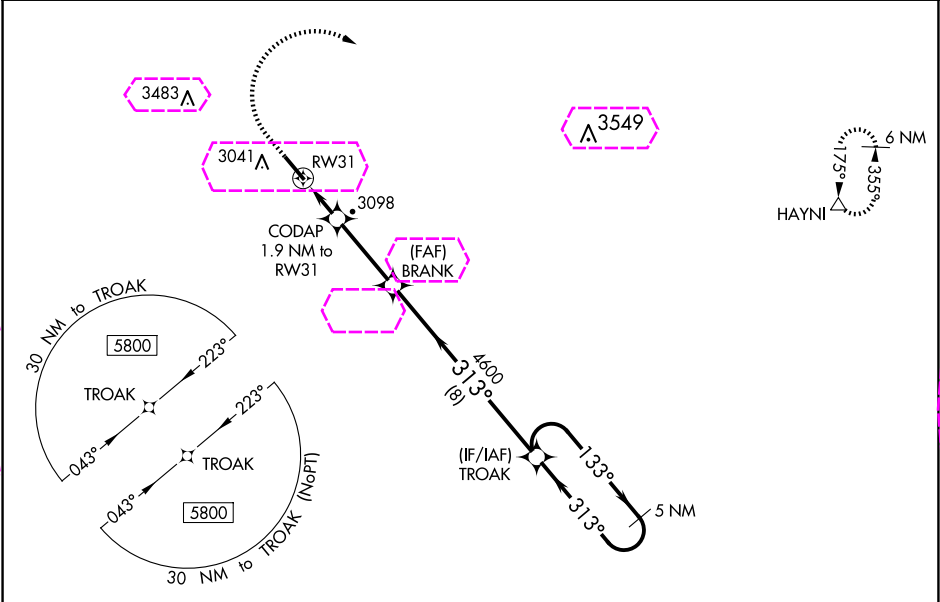
RNAV (GPS) RWY 31

BOWMAN RGNL (BWW)

⚠ For uncompensated Baro-VNAV systems, LNAV/VNAV NA below -20°C (-4°F) or above 54°C (130°F). DME/DME RNP-0.3 NA. When local altimeter setting not received, use Hettinger altimeter setting and increase all DA 102 feet, and all MDA 120 feet; increase LPV and LNAV/VNAV visibility ¼ mile all Cats, increase LNAV Cat C visibility ¼ mile. Baro-VNAV and VDP NA when using Hettinger altimeter setting.

MISSED APPROACH:
Climb to 3500 then climbing right turn to 6000 direct HAYNI and hold.

AWOS-3PT 118.075	SALT LAKE CITY CENTER 126.85 305.2	UNICOM 122.8 (CTAF)
----------------------------	--	-------------------------------



ELEV 2965 TDZE 2965

3500	6000	HAYNI
↑	↷	△

* LNAV only

* 1.1 NM to RW31

* 3600

* 4600

5 NM Holding Pattern

GP 3.00° TCH 40

1.1 NM	0.8 NM	3.1 NM	8 NM
--------	--------	--------	------

CATEGORY	A	B	C	D
LPV DA	3215-1		250 (300-1)	
LNAV/VNAV DA	3227-1		262 (300-1)	
LNAV MDA	3360-1	395 (400-1)	3360-1½	395 (400-1½)
CIRCLING	3380-1 415 (500-1)	3420-1 455 (500-1)	3580-1¾ 615 (700-1¾)	3580-2 615 (700-2)

BOWMAN, NORTH DAKOTA
Orig 31MAR16

46°10'N-103°18'W

BOWMAN RGNL (BWW)
RNAV (GPS) RWY 31

BOWMAN, NORTH DAKOTA

AL-11025 (FAA)

25219

WAAS CH 42538 W31A	APP CRS 313°	Rwy Ldg 5701 TDZE 2965 Apt Elev 2965
--	------------------------	---

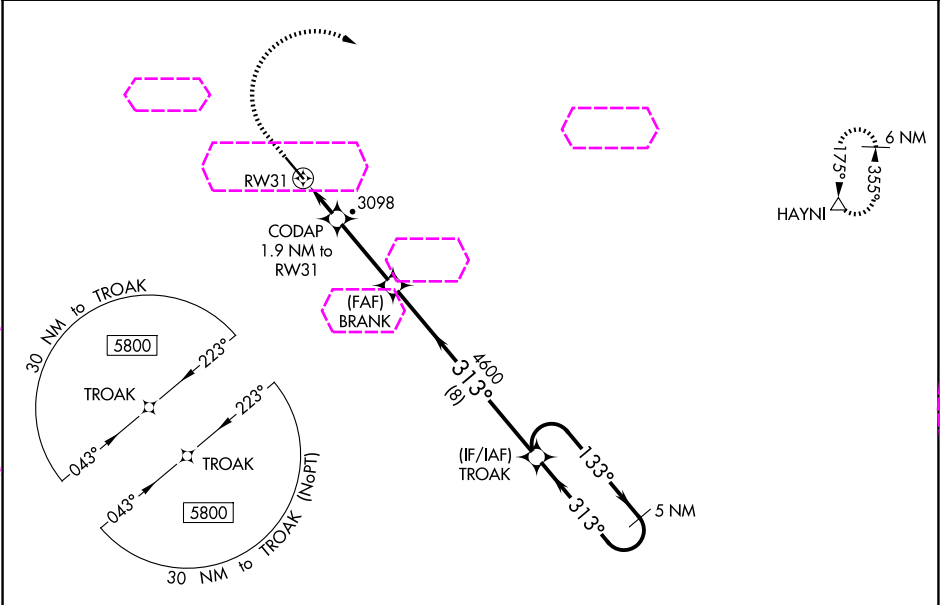
RNAV (GPS) RWY 31

BOWMAN RGNL (BWW)

For uncompensated Baro-VNAV systems, LNAV/VNAV NA below -20°C (-4°F) or above 54°C (130°F). DME/DME RNP-0.3 NA. When local altimeter setting not received, use Hettinger altimeter setting and increase all DA 102 feet, and all MDA 120 feet; increase LPV and LNAV/VNAV visibility ¼ mile all Cats, increase LNAV Cat C visibility ¼ mile. Baro-VNAV and VDP NA when using Hettinger altimeter setting.

MISSED APPROACH:
Climb to 3500 then
descending right turn to
6000 direct HAYNI
and hold.

AWOS-3PT 118.075	SALT LAKE CITY CENTER 126.85 305.2	UNICOM 122.8 (CTAF)
----------------------------	--	-------------------------------



ELEV 2965	TDZE 2965
-----------	-----------

REIL Rwy 13 and 31
MIRL Rwy 13-31

3500 6000 HAYNI

BRANK 4600
CODAP 1.9 NM to RW31
RW31
TROAK 5 NM Holding Pattern
133° 313° 5800
GP 3.00° TCH 40

CATEGORY	A	B	C	D
LPV DA	3215-1	250 (300-1)		
LNAV/VNAV DA	3227-1	262 (300-1)		
LNAV MDA	3360-1	395 (400-1)	3360-1½	395 (400-1½)
CIRCLING	3380-1 415 (500-1)	3420-1 455 (500-1)	3580-1¾ 615 (700-1¾)	3580-2 615 (700-2)

BOWMAN, NORTH DAKOTA
Orig 31MAR16

46°10'N-103°18'W

BOWMAN RGNL (BWW)

RNAV (GPS) RWY 31