

BOWMAN, NORTH DAKOTA

AL-11025 (FAA)

20198

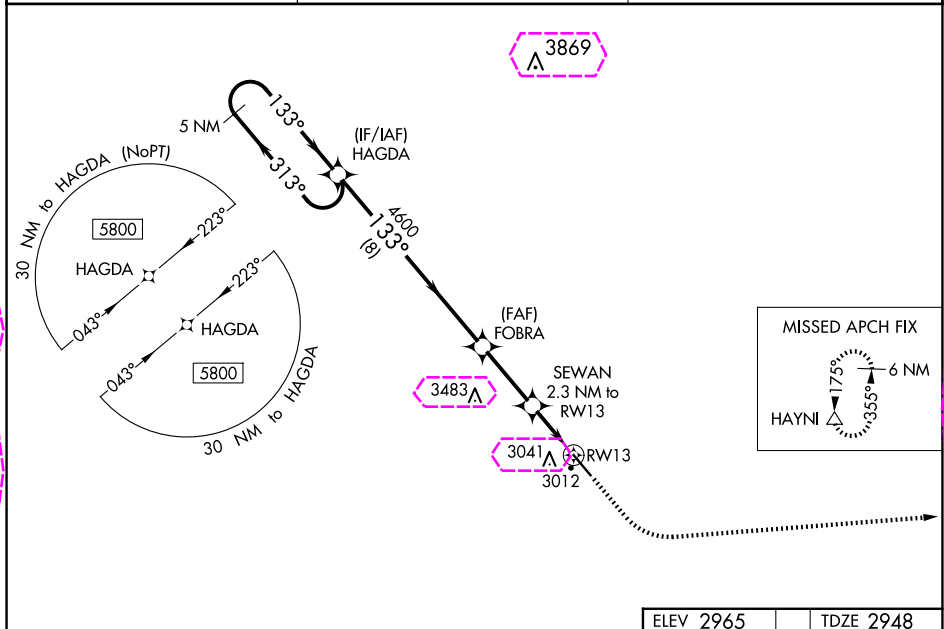
WAAS CH <b>81839</b> <b>W13A</b>	APP CRS <b>133°</b>	Rwy Idg TDZE Apt Elev	<b>5701</b> <b>2948</b> <b>2965</b>
--	------------------------	-----------------------------	---

# RNAV (GPS) RWY 13

BOWMAN RGNL (BWW)

<p><b>⚠</b> For uncompensated Baro-VNAV systems, LNAV/VNAV NA below -20°C (-4°F) or above 54°C (130°F). DME/DME RNP-0.3 NA. When local altimeter setting not received, use Hettinger altimeter setting and increase all DA 102 feet, and all MDA 120 feet; increase LPV and LNAV/VNAV visibility ¼ mile all Cats, and LNAV Cat C visibility ⅓ mile. Baro-VNAV and VDP NA when using Hettinger altimeter setting.</p>	<p><b>MISSED APPROACH:</b> Climb to 3400 then climbing left turn to 6000 direct HAYNI and hold.</p>
--	---

AWOS-3PT <b>118.075</b>	SALT LAKE CITY CENTER <b>126.85 305.2</b>	UNICOM <b>122.8 (CTAF) 1</b>
----------------------------	--	---------------------------------



5 NM Holding Pattern		ELEV 2965		TDZE 2948	
HAGDA		3400		6000	
GP 3.00° TCH 40		HAYNI		△	
5800		4600		3700	
313°		133°		133° to RW13	
FOBRA		SEWAN 2.3 NM to RW13		* LNAV only	
8 NM		2.8 NM		1.4 NM 0.9 NM	
CATEGORY		A		B	
LPV DA		3198-1		250 (300-1)	
LNAV/VNAV DA		3198-1		250 (300-1)	
LNAV MDA		3280-1		332 (400-1)	
CIRCLING		3380-1 415 (500-1)		3420-1 455 (500-1)	
		3580-1 615 (700-1 ¼)		3580-2 615 (700-2)	

BOWMAN, NORTH DAKOTA

Orig 31MAR16

46°10'N-103°18'W

BOWMAN RGNL (BWW)

# RNAV (GPS) RWY 13

REIL Rwy 13 and 31 1  
MIRL Rwy 13-31 1

BOWMAN, NORTH DAKOTA

AL-11025 (FAA)

25219

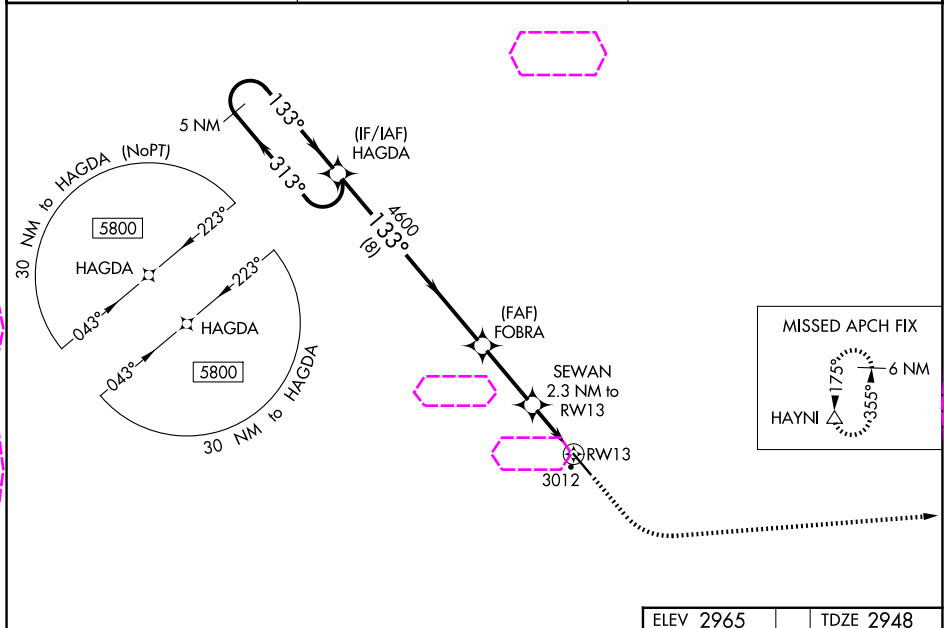
WAAS CH <b>81839</b> <b>W13A</b>	APP CRS <b>133°</b>	Rwy Ldg TDZE Apt Elev	<b>5701</b> <b>2948</b> <b>2965</b>
--	------------------------	-----------------------------	---

# RNAV (GPS) RWY 13

BOWMAN RGNL (BWW)

<p><b>⚠</b> For uncompensated Baro-VNAV systems, LNAV/VNAV NA below -20°C (-4°F) or above 54°C (130°F). DME/DME RNP-0.3 NA. When local altimeter setting not received, use Hettinger altimeter setting and increase all DA 102 feet, and all MDA 120 feet; increase LPV and LNAV/VNAV visibility ¼ mile all Cats, and LNAV Cat C visibility ⅓ mile. Baro-VNAV and VDP NA when using Hettinger altimeter setting.</p>	<p><b>MISSED APPROACH:</b> Climb to 3400 then climbing left turn to 6000 direct HAYNI and hold.</p>
--	---

AWOS-3PT <b>118.075</b>	SALT LAKE CITY CENTER <b>126.85 305.2</b>	UNICOM <b>122.8 (CTAF) 1</b>
----------------------------	--	---------------------------------



5 NM Holding Pattern		ELEV 2965		TDZE 2948	
HAGDA		3400		6000	
GP 3.00° TCH 40		HAYNI		△	
5800		FOBRA		*LNAV only	
313°		4600		SEWAN 2.3 NM to RWY13	
133°		*3700		*0.9 NM to RWY13	
8 NM		2.8 NM		1.4 NM 0.9 NM	
CATEGORY	A	B	C	D	
LPV DA		3198-1	250 (300-1)		
LNAV/VNAV DA		3198-1	250 (300-1)		
LNAV MDA		3280-1	332 (400-1)		
CIRCLING	3380-1 415 (500-1)	3420-1 455 (500-1)	3580-1¾ 615 (700-1¾)	3580-2 615 (700-2)	

BOWMAN, NORTH DAKOTA

Orig 31MAR16

46°10'N-103°18'W

BOWMAN RGNL (BWW)

# RNAV (GPS) RWY 13

NC-1, 07 AUG 2025 to 04 SEP 2025

NC-1, 07 AUG 2025 to 04 SEP 2025