

WEST CREEK, NEW JERSEY

AL-11022 (FAA)

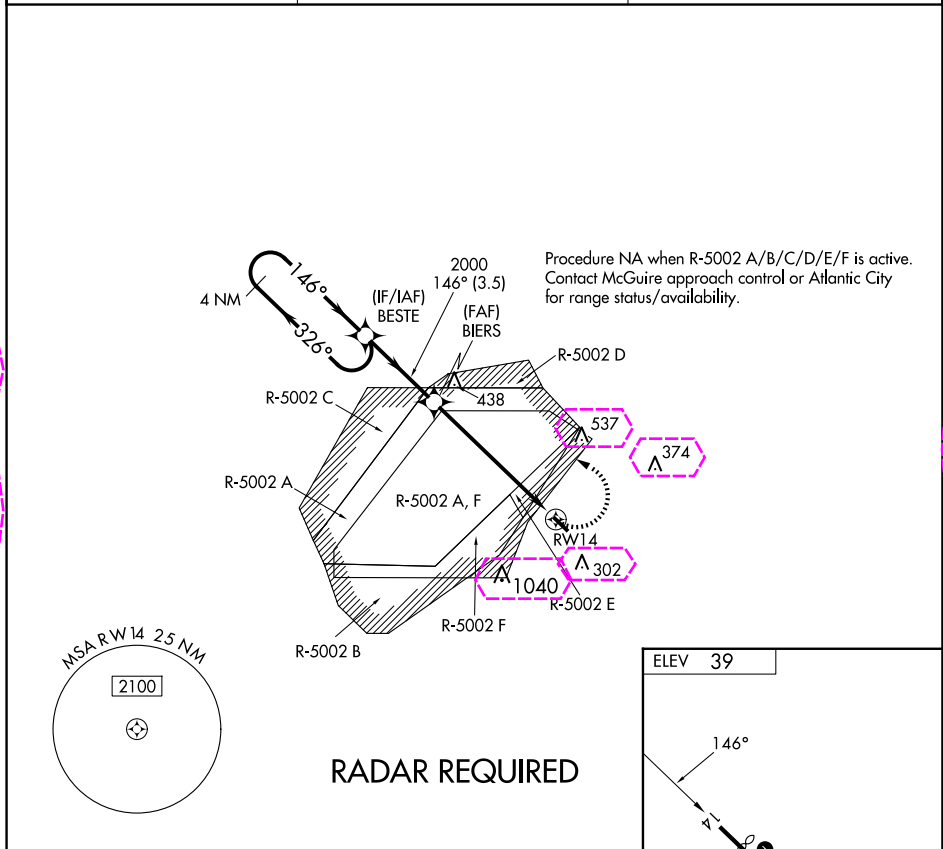
23222

APP CRS	Rwy Idg	N/A
146°	TDZE	N/A
	Apt Elev	39

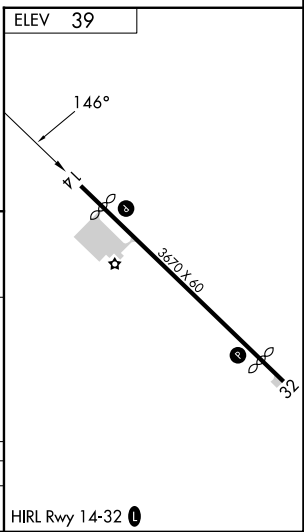
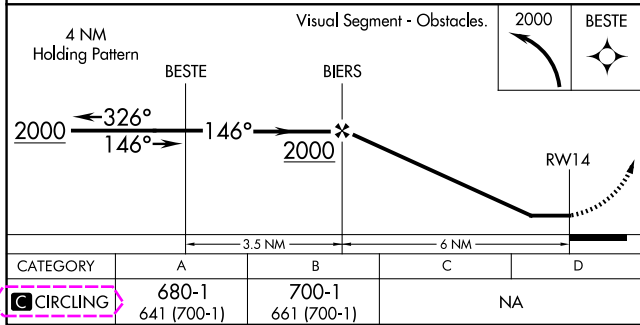
RNAV (GPS)-A

EAGLES NEST (31E)

NA	DME/DME RNP-0.3 NA. Procedure NA at night. Use Toms River altimeter setting; when not received use Atlantic City altimeter setting. Helicopter visibility reduction below 1 SM NA.	MISSED APPROACH: Climbing left turn to 2000 direct BESTE and hold.
MUX AWOS-3PT 119.875	ATLANTIC CITY APP CON 134.25 292.2	CTAF 122.9 0



RADAR REQUIRED



WEST CREEK, NEW JERSEY
Orig-A 12OCT17

39°40'N-74°18'W

EAGLES NEST (31E)
RNAV (GPS)-A

NE-2, 10 JUL 2025 to 07 AUG 2025

NE-2, 10 JUL 2025 to 07 AUG 2025

WEST CREEK, NEW JERSEY

AL-11022 (FAA)

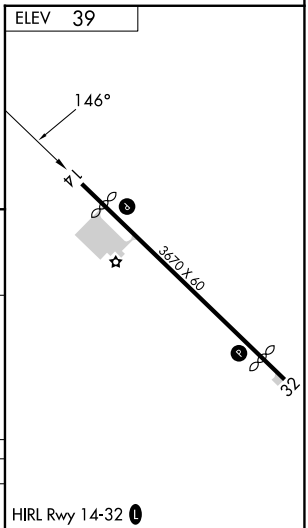
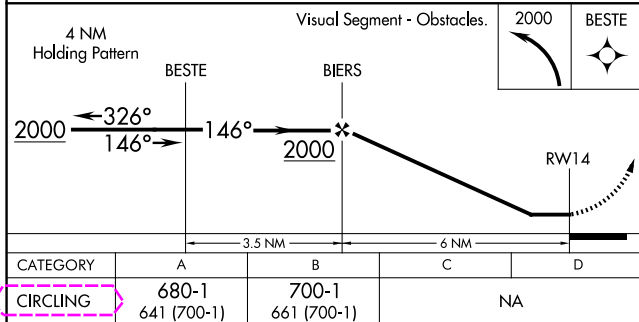
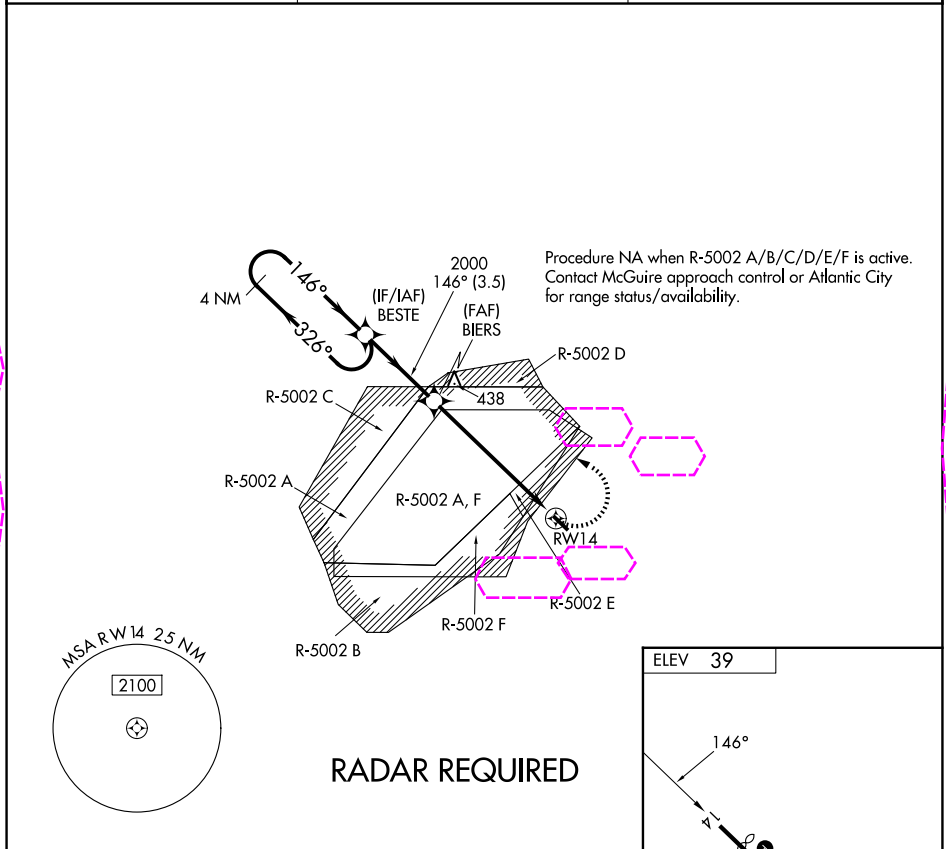
25219

APP CRS	Rwy Ldg	N/A
146°	TDZE	N/A
	Apt Elev	39

RNAV (GPS)-A

EAGLES NEST (31E)

<p>▼ NA</p>	DME/DME RNP-0.3 NA. Procedure NA at night. Use Toms River altimeter setting; when not received use Atlantic City altimeter setting. Helicopter visibility reduction below 1 SM NA.	MISSED APPROACH: Climbing left turn to 2000 direct BESTE and hold.
MUX AWOS-3PT 119.875	ATLANTIC CITY APP CON 134.25 292.2	CTAF 122.9 0



WEST CREEK, NEW JERSEY
Orig-A 12OCT17

39°40'N-74°18'W

EAGLES NEST (31E)
RNAV (GPS)-A

NE-2, 07 AUG 2025 to 04 SEP 2025

NE-2, 07 AUG 2025 to 04 SEP 2025