

GENEVA, ALABAMA

AL-10998 (FAA)

23110

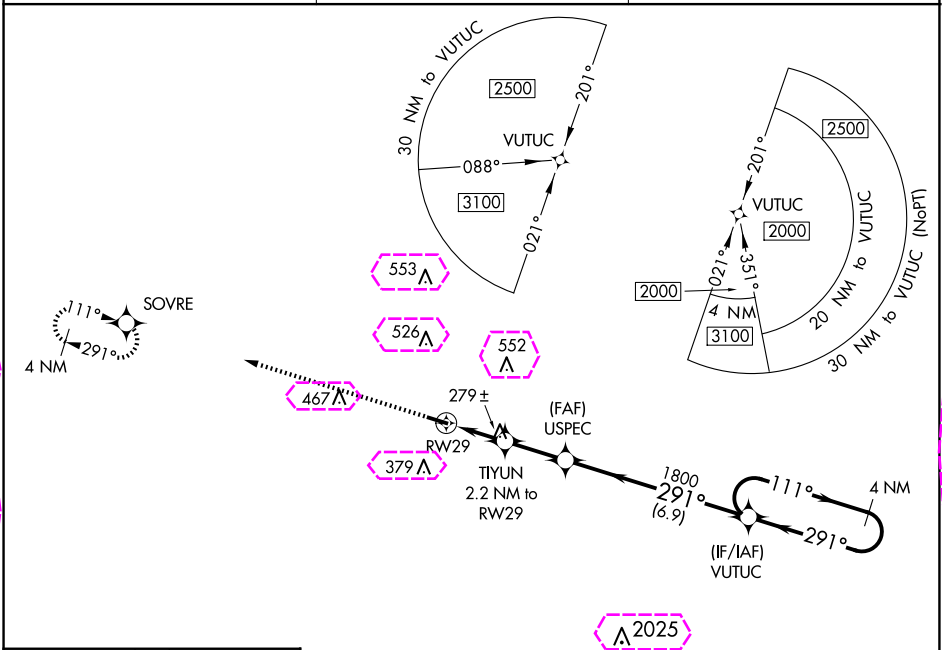
APP CRS	Rwy Idg	3998
291°	TDZE	100
	Apt Elev	100

RNAV (GPS) RWY 29

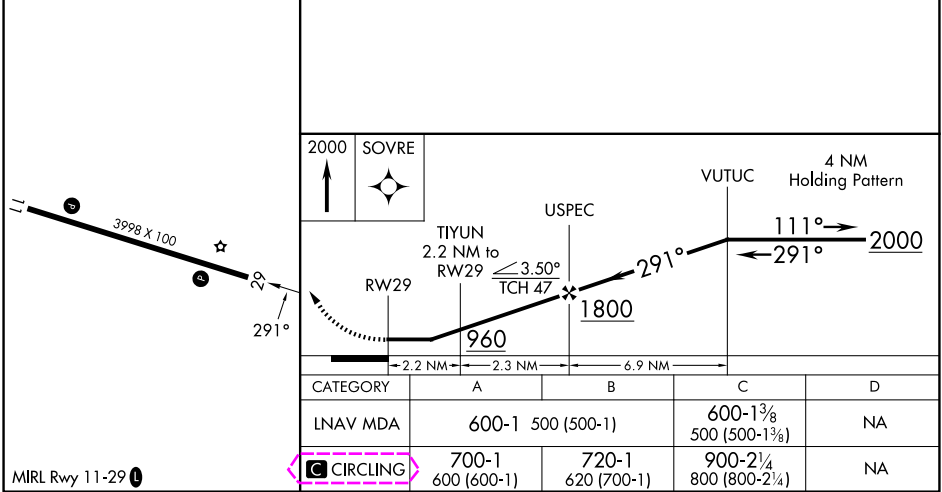
GENEVA MUNI (33J)

<p>▼ NA</p>	<p>DME/DME RNP-0.3 NA. Procedure NA at night. Use Cairns AAF altimeter setting, when not received, use Dothan altimeter setting and increase all MDA 40 feet, and increase all Cat C visibilities ¼ SM. Rwy 29 helicopter visibility reduction below 1 SM NA.</p>	<p>MISSED APPROACH: Climb to 2000 direct SOVRE and hold.</p>
-------------	---	--

KOZR ATIS 111.2 316.15	CAIRNS APP CON ★ 133.75 270.35	UNICOM 122.8 (CTAF) 0
---------------------------	-----------------------------------	--------------------------



ELEV 100	TDZE 100
----------	----------



GENEVA, ALABAMA
Orig-A 02FEB17

31°03'N-85°52'W

RNAV (GPS) RWY 29

GENEVA MUNI (33J)

SE-4, 10 JUL 2025 to 07 AUG 2025

SE-4, 10 JUL 2025 to 07 AUG 2025

GENEVA, ALABAMA

AL-10998 (FAA)

25219

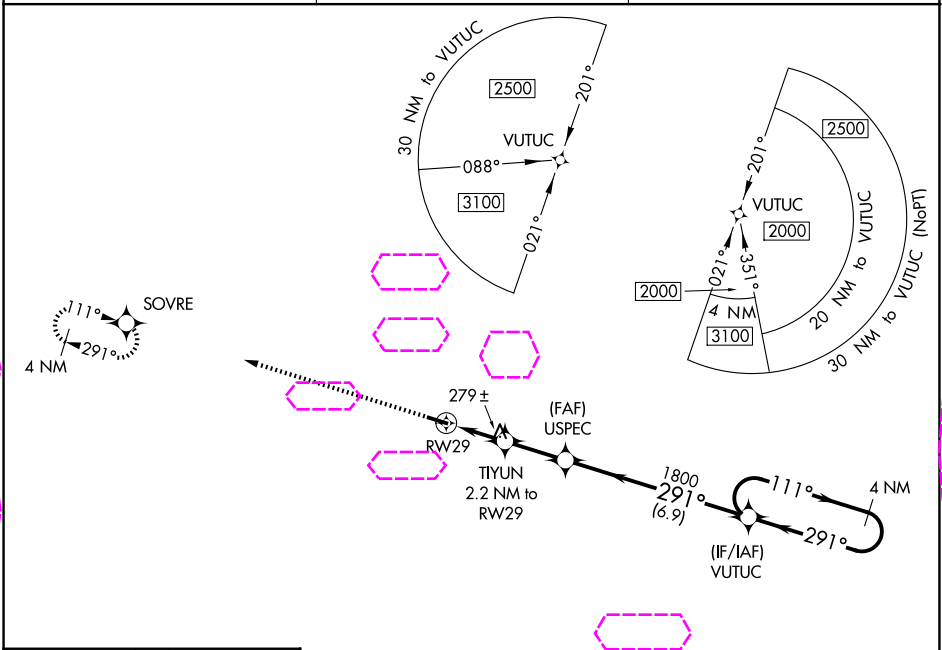
APP CRS	Rwy Ldg	3998
291°	TDZE	100
	Apt Elev	100

RNAV (GPS) RWY 29

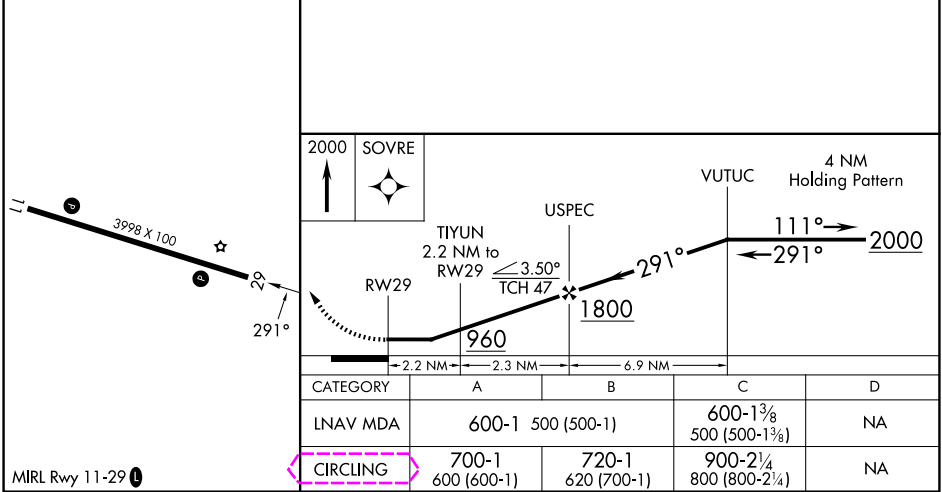
GENEVA MUNI (33J)

<p>▼ NA</p> <p>DME/DME RNP-0.3 NA. Procedure NA at night. Use Cairns AAF altimeter setting, when not received, use Dothan altimeter setting and increase all MDA 40 feet, and increase all Cat C visibilities ¼ SM. Rwy 29 helicopter visibility reduction below 1 SM NA.</p>	<p>MISSED APPROACH: Climb to 2000 direct SOVRE and hold.</p>
---	--

KOZR ATIS 111.2 316.15	CAIRNS APP CON ★ 133.75 270.35	UNICOM 122.8 (CTAF) 0
---------------------------	-----------------------------------	--------------------------



ELEV 100	TDZE 100
----------	----------



GENEVA, ALABAMA
Orig-A 02FEB17

31°03'N-85°52'W

GENEVA MUNI (33J)
RNAV (GPS) RWY 29