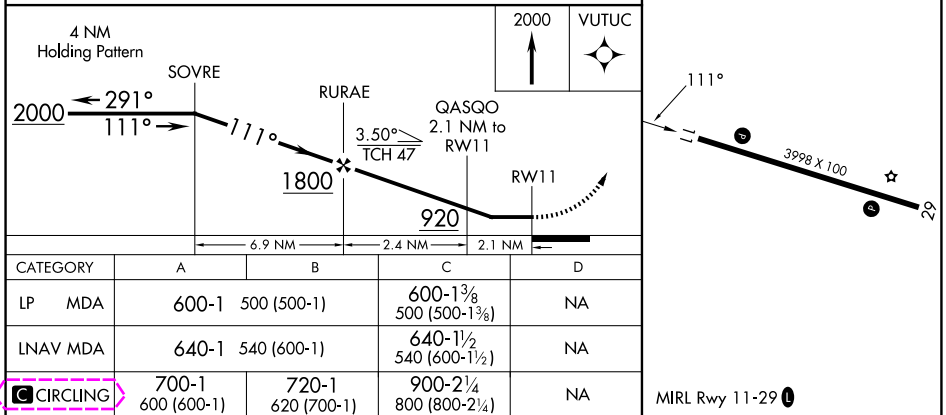
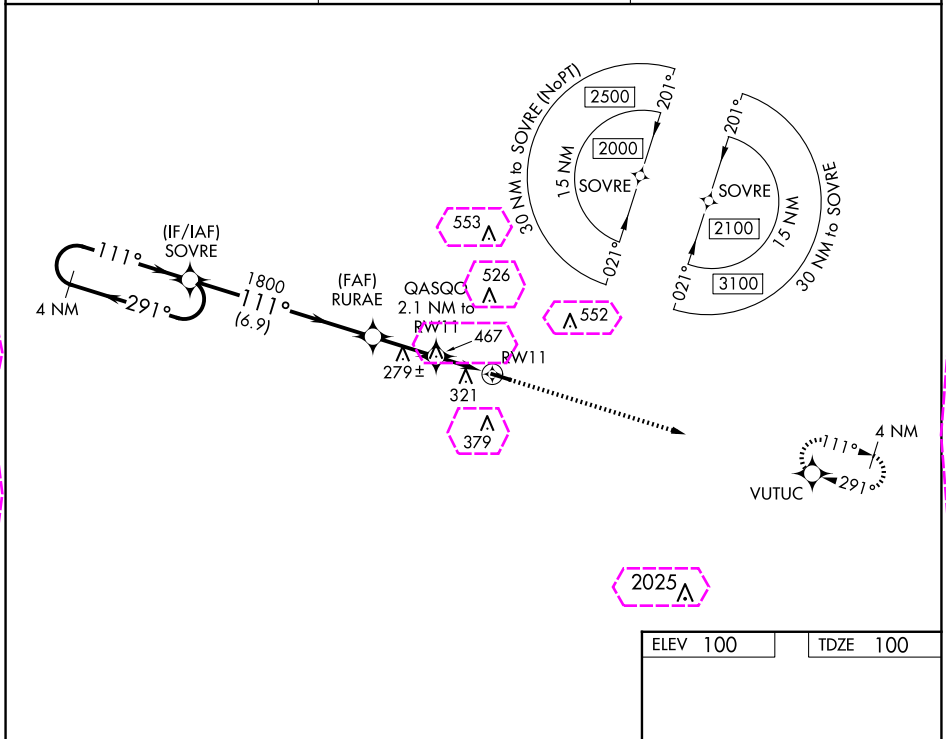


RNAV (GPS) RWY 11
GENEVA MUNI (33J)

MISSED APPROACH: Climb to 2000 direct VUTUC and hold.

<p>KOZR ATIS</p> <p>111.2 316.15</p>	<p>CAIRNS APP CON★</p> <p>133.75 270.35</p>	<p>UNICOM</p> <p>122.8 (CTAF) 0</p>
---	--	--



GENEVA, ALABAMA

AL-10998 (FAA)

25219

WAAS CH 70735 W11A	APP CRS 111°	Rwy Ldg 3998 TDZE 100 Apt Elev 100
--	------------------------	---

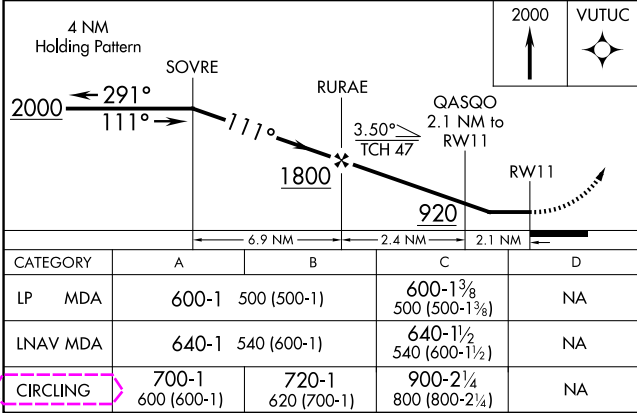
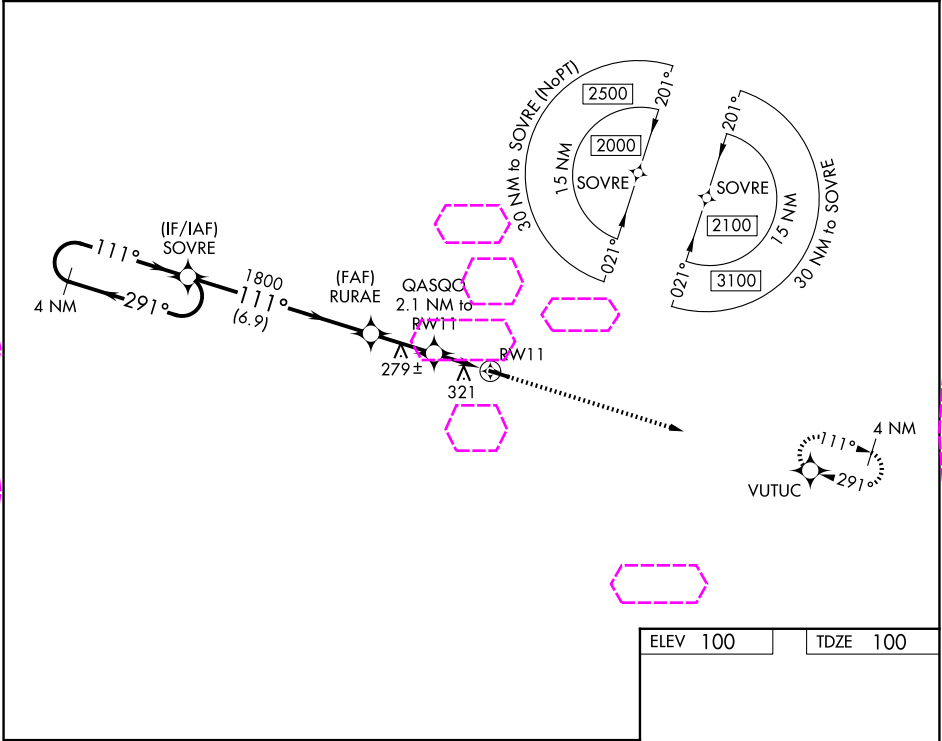
RNAV (GPS) RWY 11
GENEVA MUNI (33J)

⚠ DME/DME RNP-0.3 NA. Procedure NA at night. Rwy 11 helicopter visibility reduction below 1 SM NA. Use Cairns AAF altimeter setting, when not received, use Dathan altimeter setting and increase all MDA 40 feet, increase LP and LNAV Cat C visibility $\frac{1}{8}$ SM and Circling Cat C visibility $\frac{1}{4}$ mile.

⚠ NA

MISSED APPROACH: Climb to 2000 direct VUTUC and hold.

KOZR ATIS 111.2 316.15	CAIRNS APP CON ★ 133.75 270.35	UNICOM 122.8 (CTAF) 0
----------------------------------	--	---------------------------------



ELEV 100	TDZE 100
MIRL Rwy 11-29 0	

GENEVA, ALABAMA
Orig-A 02FEB17

31°03'N-85°52'W

GENEVA MUNI (33J)
RNAV (GPS) RWY 11

SE-4, 07 AUG 2025 to 04 SEP 2025

SE-4, 07 AUG 2025 to 04 SEP 2025